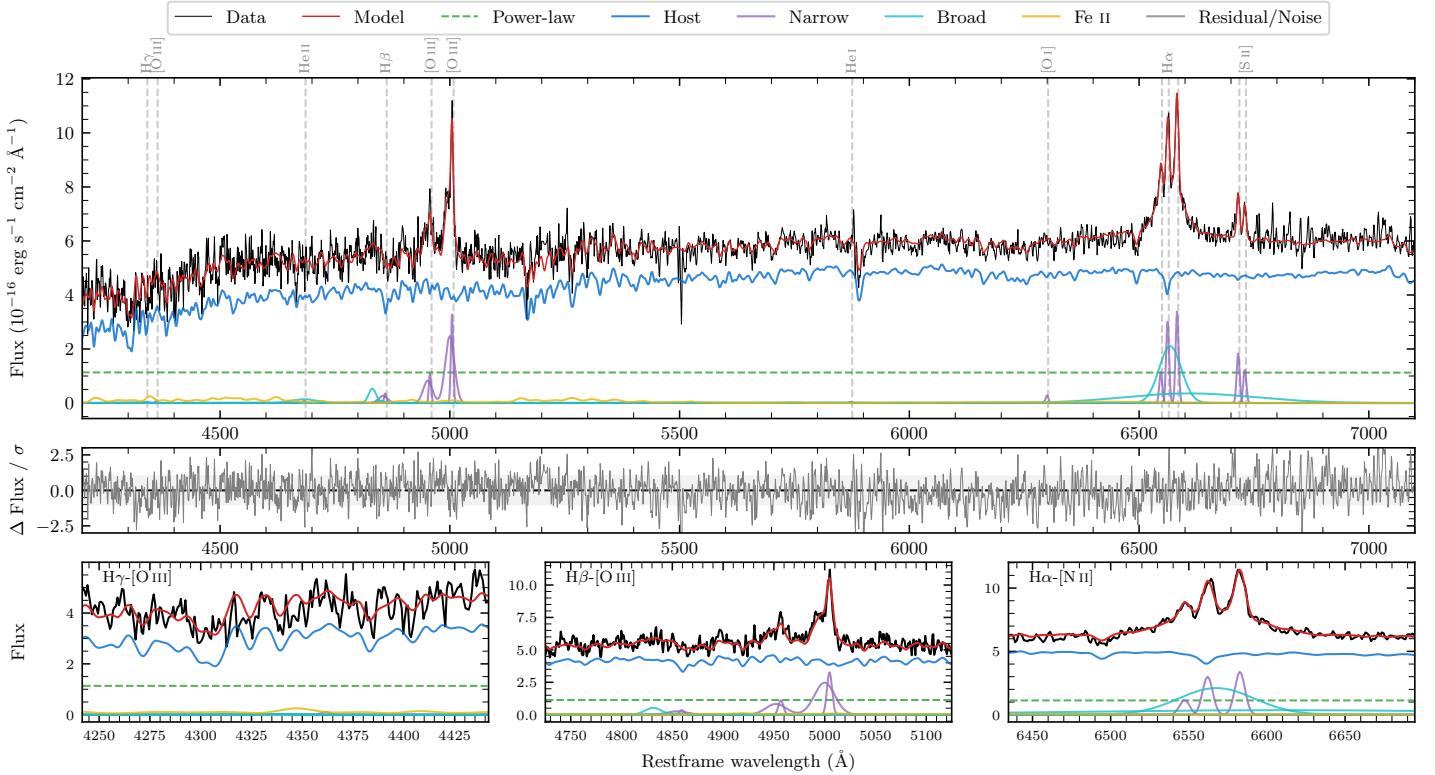
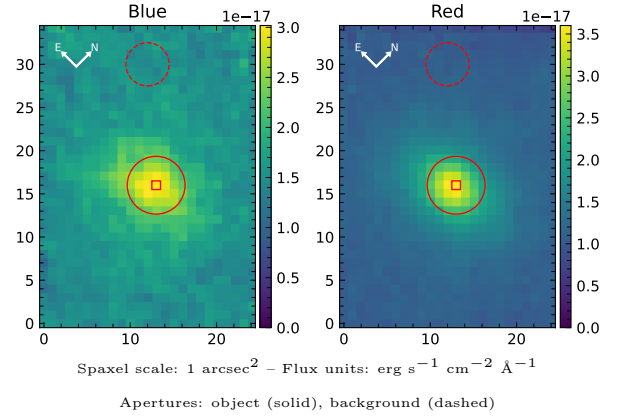


LEDA 1081001

Spectrum ID	13873304_sp1	Spectrum type	Sy 1.8
Alt name	g0102208-025212	Quality flag	good
z	0.0709	AGN reference	6dFGS
RA, Dec	15.5866, -2.8699	MW $E(B-V)$	0.029
MJD	60209.62	Power law α_ν	-1.99 ± 0.02
SNR/ \AA B/R	12.3/24.7	$\log L_{5100, \text{AGN}}$	42.86 ± 0.03
Obs airmass	1.14	$\log H\beta_{\text{Br}}/[\text{O III}]$	-0.81 ± 0.12
SMSS ID	13873304	$\log M_{L5100}/M_\odot$	6.62 ± 0.10
Neighbour	None $< 15''$	$\log M_{\text{H}\alpha}/M_\odot$	7.15 ± 0.03
SMSS $\langle r_6'' \text{ap} \rangle$	16.45 ± 0.08	$\log M_{\text{H}\beta}/M_\odot$	6.24 ± 0.12
2MASS K_{ext}	11.94 ± 0.08	$\log M_{[\text{O III}]} / M_\odot$	6.74 ± 0.10



Emission Line Measurements

Line	$\log L$ (erg s ⁻¹)	FWHM (km s ⁻¹)	σ (km s ⁻¹)	EW (Å)
H γ Narrow	—	—	—	—
Hγ Broad	—	—	—	—
[O III] 4364	—	—	—	—
He II Narrow	—	—	—	—
He II Broad	40.11 ± 0.25	4103 ± 62	1742 ± 25	9.15 ± 3.33
H β Narrow	40.07 ± 0.18	561 ± 75	540 ± 26	8.24 ± 1.88
Hβ Broad	40.24 ± 0.11	1268 ± 139	372 ± 56	12.02 ± 1.93
[O III] 5007	41.04 ± 0.02	561 ± 75	541 ± 26	78.09 ± 2.01
He I Narrow	—	—	—	—
He I Broad	—	—	—	—
[O I] 6300	39.47 ± 0.17	350 ± 62	148 ± 25	2.07 ± 0.56
H α Narrow	40.51 ± 0.02	350 ± 62	148 ± 25	23.21 ± 0.68
Hα Broad	41.53 ± 0.02	2906 ± 72	2755 ± 73	241.81 ± 4.29
[N II] 6585	40.57 ± 0.02	350 ± 62	148 ± 25	26.24 ± 0.69
[S II] 6718	40.31 ± 0.03	350 ± 62	148 ± 25	14.48 ± 0.69
[S II] 6732	40.14 ± 0.04	350 ± 62	148 ± 25	9.81 ± 0.65

Emission Summary

H α broad SNR	5.89
H β broad SNR	1.32
H γ broad SNR	0.00
AGN frac	0.22
Host frac	0.78
$\log L_{5100, \text{Host}}$	43.41
Fe II/H β	3.43
Fe II/[O III]	0.53

Quality Flags

spurious_hab/hbb	0/0
15100	1
balmer	1
balmer_snr	2
hb_width	1
balmer_width	2