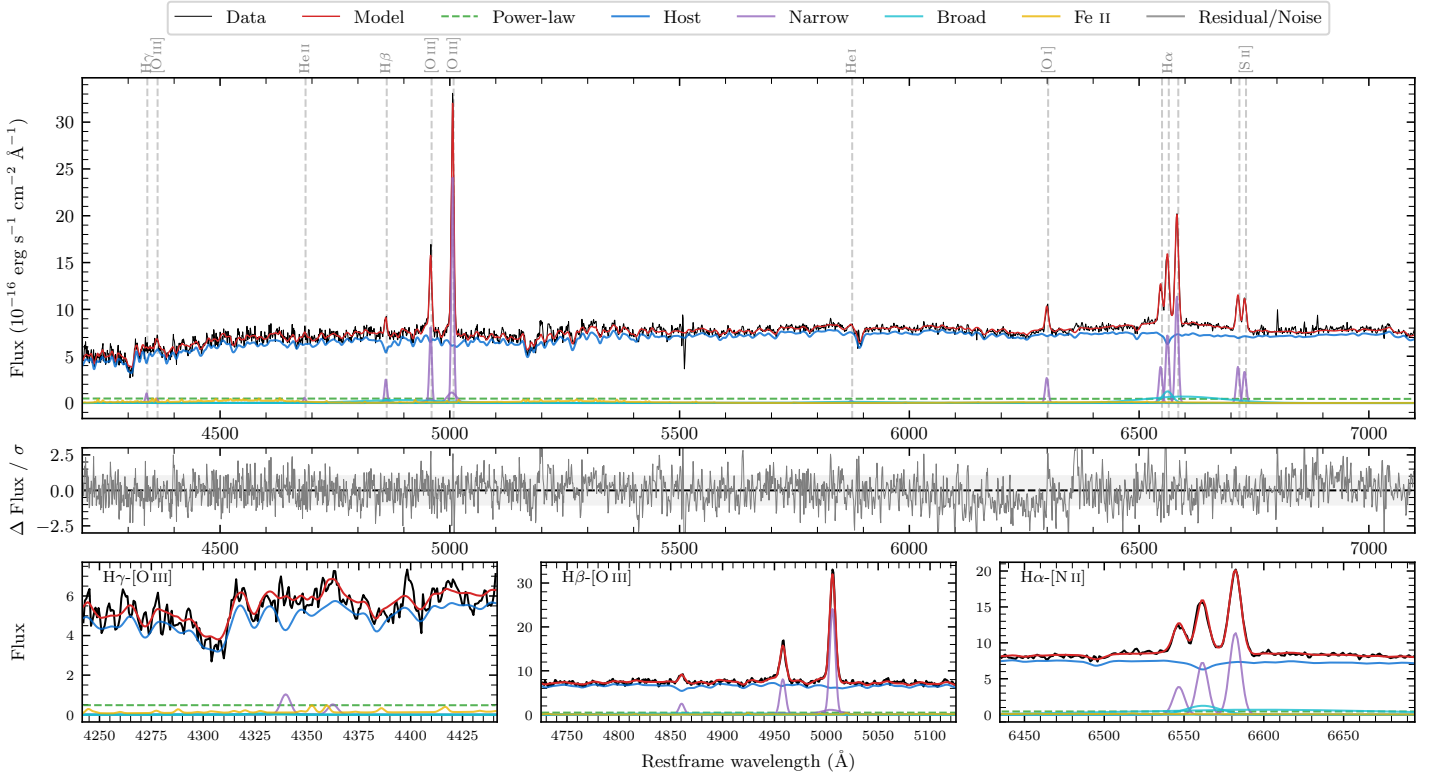
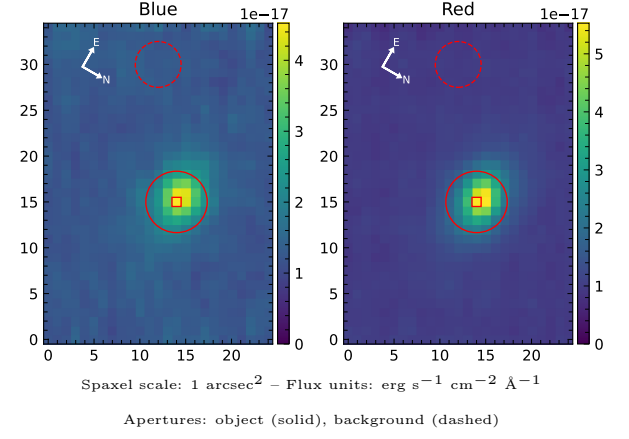


LEDA 1075692

Spectrum ID	13872465_sp1	Spectrum type	Sy 1.5
Alt name	g0101244-030840	Quality flag	good
z	0.0696	AGN reference	6dFGS
RA, Dec	15.3516, -3.1445	MW $E(B - V)$	0.026
MJD	60223.62	Power law α_ν	-1.83 ± 0.22
SNR/ \AA B/R	17.0/33.1	$\log L_{5100, \text{AGN}}$	42.46 ± 0.12
Obs airmass	1.16	$\log H\beta_{\text{Br}}/[\text{O III}]$	-0.37 ± 0.07
SMSS ID	13872465	$\log M_{L5100}/M_\odot$	7.45 ± 0.75
Neighbour	None $< 15''$	$\log M_{\text{H}\alpha}/M_\odot$	6.57 ± 0.06
SMSS $\langle r_6 \rangle_{\text{ap}}$	16.41 ± 0.04	$\log M_{\text{H}\beta}/M_\odot$	7.60 ± 0.75
2MASS K_{ext}	12.36 ± 0.07	$\log M_{[\text{O III}]} / M_\odot$	7.91 ± 0.75



Emission Line Measurements

Line	$\log L$ (erg s ⁻¹)	FWHM (km s ⁻¹)	σ (km s ⁻¹)	EW (Å)
H γ Narrow	39.96 ± 0.12	395 ± 63	278 ± 28	15.93 ± 4.76
Hγ Broad	—	—	—	—
[O III] 4364	39.60 ± 0.23	384 ± 63	163 ± 25	6.91 ± 2.49
He II Narrow	39.66 ± 0.21	384 ± 63	163 ± 25	8.10 ± 2.10
He II Broad	39.42 ± 0.47	1339 ± 68	568 ± 28	4.63 ± 3.98
H β Narrow	40.40 ± 0.06	395 ± 63	278 ± 28	44.40 ± 4.04
Hβ Broad	41.02 ± 0.07	4016 ± 3092	4680 ± 124	187.02 ± 14.41
[O III] 5007	41.39 ± 0.01	395 ± 63	278 ± 28	438.44 ± 4.61
He I Narrow	39.42 ± 0.22	384 ± 63	163 ± 25	4.86 ± 1.51
He I Broad	40.48 ± 0.12	8356 ± 67	3549 ± 27	55.31 ± 7.13
[O I] 6300	40.47 ± 0.02	384 ± 63	163 ± 25	54.60 ± 1.51
H α Narrow	40.92 ± 0.01	384 ± 63	163 ± 25	155.33 ± 1.87
Hα Broad	41.37 ± 0.02	1678 ± 104	2893 ± 40	443.22 ± 8.80
[N II] 6585	41.12 ± 0.01	384 ± 63	163 ± 25	243.67 ± 1.85
[S II] 6718	40.65 ± 0.02	384 ± 63	163 ± 25	84.66 ± 1.80
[S II] 6732	40.59 ± 0.02	384 ± 63	163 ± 25	73.50 ± 1.74

Emission Summary

H α broad SNR	4.59
H β broad SNR	1.52
H γ broad SNR	0.39
AGN frac	0.07
Host frac	0.93
$\log L_{5100, \text{Host}}$	43.59
Fe II/H β	0.95
Fe II/[O III]	0.41

Quality Flags

spurious_hab/hbb	0/0
15100	2
balmer	1
balmer_snr	2
hb_width	2
balmer_width	1