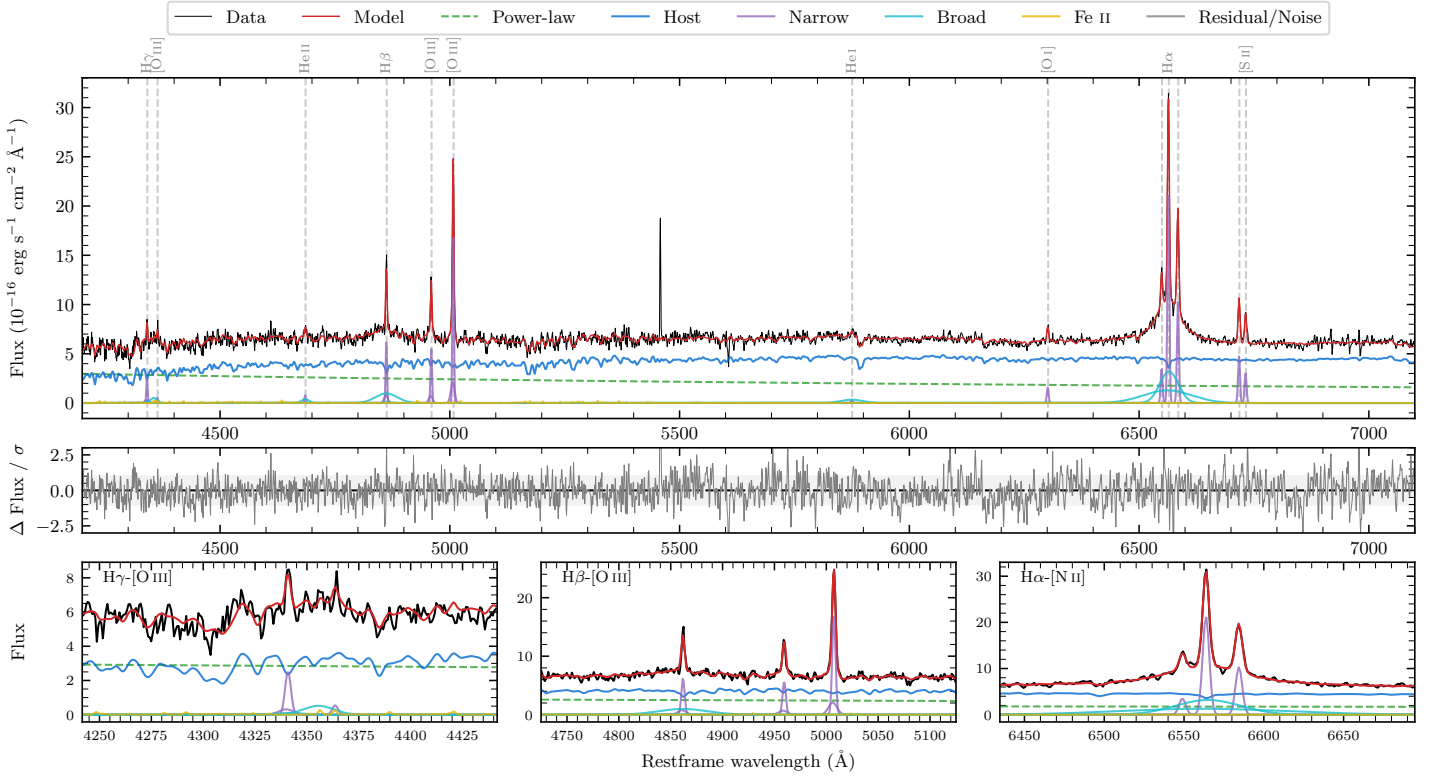
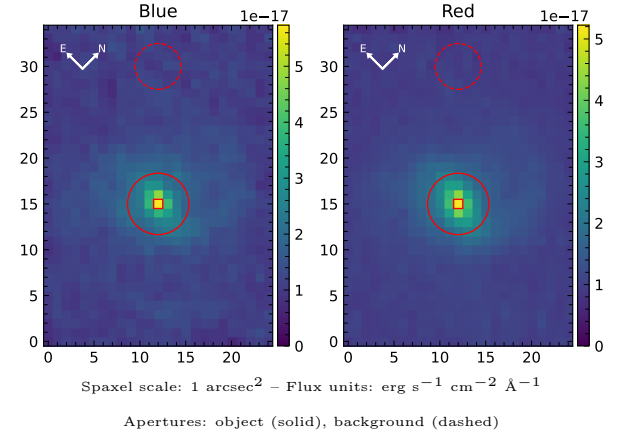


# LEDA 1007485

Spectrum ID	13781088_sp1	Spectrum type	Sy 1.5
Alt name	g0132335-080927	Quality flag	good
$z$	0.0518	AGN reference	6dFGS
RA, Dec	23.1396, -8.1575	MW $E(B - V)$	0.026
MJD	60181.72	Power law $\alpha_\nu$	$-0.82 \pm 0.22$
SNR/ $\text{\AA}$ B/R	12.6/21.6	$\log L_{5100, \text{AGN}}$	$42.89 \pm 0.03$
Obs airmass	1.09	$\log H\beta_{\text{Br}}/[\text{O III}]$	$-0.16 \pm 0.05$
SMSS ID	13781088	$\log M_{L5100}/M_\odot$	$7.44 \pm 0.07$
Neighbour	None $< 15''$	$\log M_{\text{H}\alpha}/M_\odot$	$6.96 \pm 0.04$
SMSS $\langle r_6 \rangle_{\text{ap}}$	$16.55 \pm 0.02$	$\log M_{\text{H}\beta}/M_\odot$	$7.22 \pm 0.09$
2MASS $K_{\text{ext}}$	$12.54 \pm 0.13$	$\log M_{[\text{O III}]} / M_\odot$	$7.41 \pm 0.08$



## Emission Line Measurements

Line	$\log L$ (erg s <sup>-1</sup> )	FWHM (km s <sup>-1</sup> )	$\sigma$ (km s <sup>-1</sup> )	EW (Å)
H $\gamma$ Narrow	$39.90 \pm 0.08$	$245 \pm 63$	$148 \pm 26$	$4.32 \pm 0.63$
<b>H<math>\gamma</math> Broad</b>	<b><math>39.92 \pm 0.16</math></b>	<b><math>1305 \pm 162</math></b>	<b><math>436 \pm 54</math></b>	<b><math>4.19 \pm 0.97</math></b>
[O III] 4364	$39.11 \pm 0.34$	$228 \pm 63$	$96 \pm 25$	$0.72 \pm 0.38$
He II Narrow	$39.30 \pm 0.26$	$228 \pm 63$	$96 \pm 25$	$1.19 \pm 0.38$
<b>He II Broad</b>	<b><math>39.74 \pm 0.22</math></b>	<b><math>1179 \pm 62</math></b>	<b><math>500 \pm 25</math></b>	<b><math>3.26 \pm 0.86</math></b>
H $\beta$ Narrow	$40.33 \pm 0.03$	$245 \pm 63$	$148 \pm 27$	$13.46 \pm 0.60$
<b>H<math>\beta</math> Broad</b>	<b><math>40.62 \pm 0.05</math></b>	<b><math>3201 \pm 243</math></b>	<b><math>1248 \pm 43</math></b>	<b><math>25.47 \pm 1.48</math></b>
[O III] 5007	$40.78 \pm 0.01$	$245 \pm 63$	$148 \pm 26$	$38.87 \pm 0.64$
He I Narrow	$38.97 \pm 0.29$	$228 \pm 63$	$96 \pm 25$	$0.73 \pm 0.31$
<b>He I Broad</b>	<b><math>40.13 \pm 0.08</math></b>	<b><math>2837 \pm 79</math></b>	<b><math>1205 \pm 33</math></b>	<b><math>10.61 \pm 1.18</math></b>
[O I] 6300	$39.73 \pm 0.05$	$228 \pm 63$	$96 \pm 25$	$4.52 \pm 0.33$
H $\alpha$ Narrow	$40.88 \pm 0.01$	$228 \pm 63$	$96 \pm 25$	$67.20 \pm 0.52$
<b>H<math>\alpha</math> Broad</b>	<b><math>41.35 \pm 0.01</math></b>	<b><math>2675 \pm 86</math></b>	<b><math>1322 \pm 34</math></b>	<b><math>198.89 \pm 2.10</math></b>
[N II] 6585	$40.56 \pm 0.01$	$228 \pm 63$	$96 \pm 25$	$32.79 \pm 0.51$
[S II] 6718	$40.24 \pm 0.02$	$228 \pm 63$	$96 \pm 25$	$15.78 \pm 0.41$
[S II] 6732	$40.05 \pm 0.03$	$228 \pm 63$	$96 \pm 25$	$10.31 \pm 0.40$

## Emission Summary

H $\alpha$ broad SNR	8.89
H $\beta$ broad SNR	2.22
H $\gamma$ broad SNR	1.12
AGN frac	0.38
Host frac	0.62
$\log L_{5100, \text{Host}}$	43.09
Fe II/H $\beta$	–
Fe II/[O III]	–

## Quality Flags

spurious_hab/hbb	0/0
15100	1
balmer	1
balmer_snr	1
hb_width	0
balmer_width	0