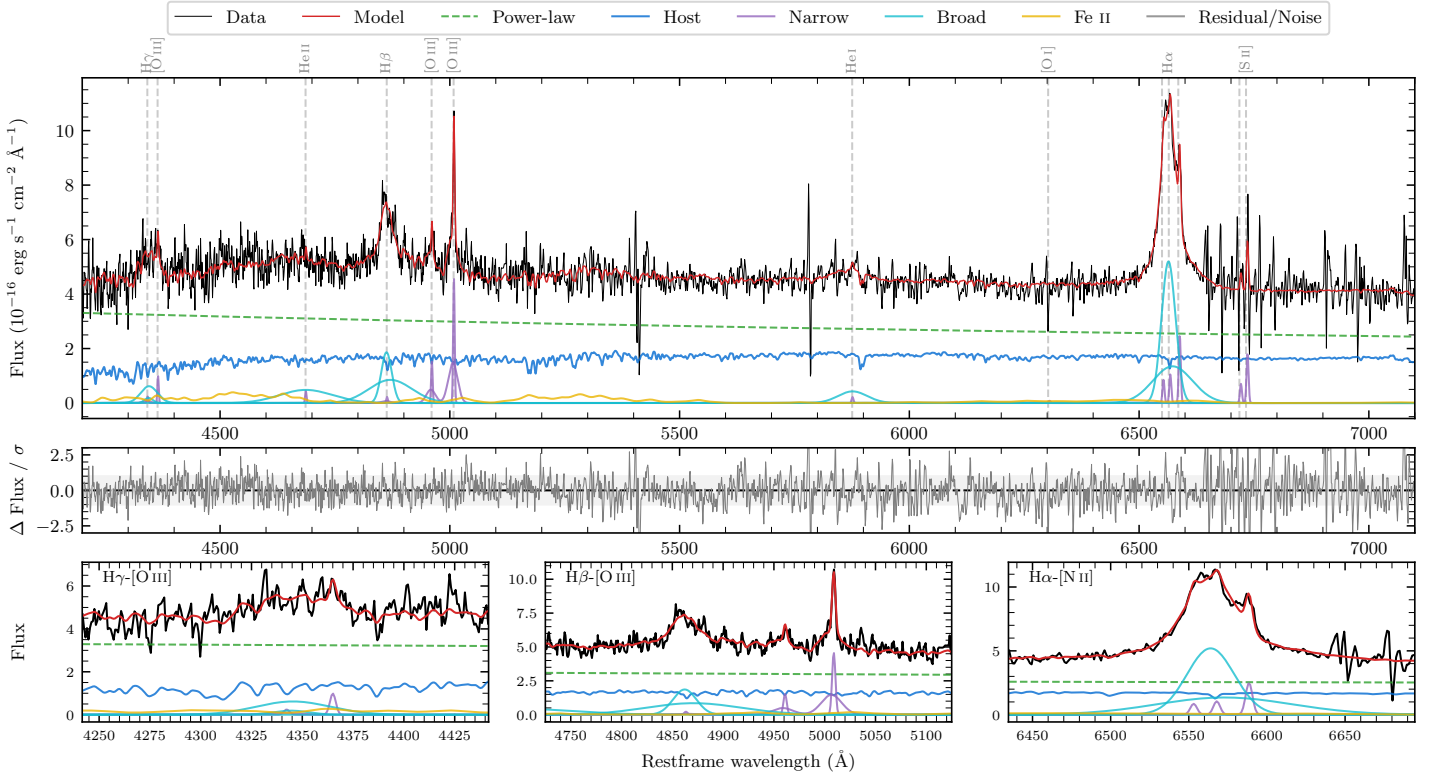
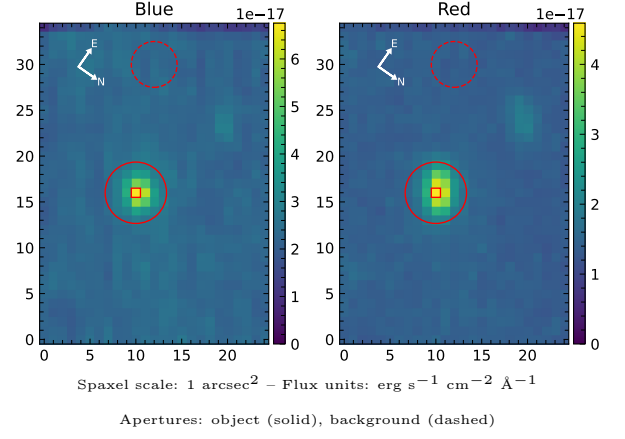


# 2MASS J01424829–1008402

Spectrum ID	13759858_sp1	Spectrum type	Sy 1.2
Alt name	g0142483–100840	Quality flag	good
$z$	0.0900	AGN reference	6dFGS
RA, Dec	25.7013, –10.1445	MW $E(B - V)$	0.023
MJD	60904.78	Power law $\alpha_\nu$	$-1.42 \pm 0.10$
SNR/ $\text{\AA}$ B/R	9.1/13.2	$\log L_{5100, \text{AGN}}$	$43.48 \pm 0.02$
Obs airmass	1.09	$\log H\beta_{\text{Br}}/[\text{O III}]$	$0.44 \pm 0.05$
SMSS ID	13759858	$\log M_{L5100}/M_\odot$	$7.36 \pm 0.07$
Neighbour	12.3", 13759859	$\log M_{\text{H}\alpha}/M_\odot$	$6.98 \pm 0.03$
SMSS $\langle r_6^{\text{ap}} \rangle$	$17.11 \pm 0.04$	$\log M_{\text{H}\beta}/M_\odot$	$7.30 \pm 0.07$
2MASS $K_{\text{ext}}$	$13.65 \pm 0.21$	$\log M_{[\text{O III}]} / M_\odot$	$7.23 \pm 0.07$



## Emission Line Measurements

Line	$\log L$ (erg s $^{-1}$ )	FWHM (km s $^{-1}$ )	$\sigma$ (km s $^{-1}$ )	EW (Å)
H $\gamma$ Narrow	–	–	–	–
<b>H<math>\gamma</math> Broad</b>	<b><math>40.87 \pm 0.12</math></b>	<b><math>2476 \pm 404</math></b>	<b><math>998 \pm 60</math></b>	<b><math>10.82 \pm 1.48</math></b>
[O III] 4364	$39.89 \pm 0.24$	$236 \pm 63$	$99 \pm 25$	$1.20 \pm 0.44$
He II Narrow	$39.56 \pm 0.36$	$236 \pm 63$	$99 \pm 25$	$0.59 \pm 0.36$
<b>He II Broad</b>	<b><math>41.18 \pm 0.08</math></b>	<b><math>8636 \pm 67</math></b>	<b><math>3667 \pm 27</math></b>	<b><math>24.36 \pm 2.34</math></b>
H $\beta$ Narrow	$39.76 \pm 0.49$	$288 \pm 66$	$495 \pm 31$	$0.94 \pm 0.88$
<b>H<math>\beta</math> Broad</b>	<b><math>41.53 \pm 0.03</math></b>	<b><math>2182 \pm 158</math></b>	<b><math>1708 \pm 72</math></b>	<b><math>55.15 \pm 2.12</math></b>
[O III] 5007	$41.09 \pm 0.03$	$288 \pm 66$	$495 \pm 31$	$20.35 \pm 1.00$
He I Narrow	$39.36 \pm 0.37$	$236 \pm 63$	$99 \pm 25$	$0.42 \pm 0.26$
<b>He I Broad</b>	<b><math>40.87 \pm 0.07</math></b>	<b><math>3800 \pm 65</math></b>	<b><math>1613 \pm 26</math></b>	<b><math>13.58 \pm 1.26</math></b>
[O I] 6300	–	–	–	–
H $\alpha$ Narrow	$40.09 \pm 0.11$	$236 \pm 63$	$99 \pm 25$	$2.43 \pm 0.33$
<b>H<math>\alpha</math> Broad</b>	<b><math>41.88 \pm 0.01</math></b>	<b><math>1884 \pm 69</math></b>	<b><math>952 \pm 26</math></b>	<b><math>146.86 \pm 1.62</math></b>
[N II] 6585	$40.47 \pm 0.05$	$236 \pm 63$	$99 \pm 25$	$5.81 \pm 0.32$
[S II] 6718	$39.93 \pm 0.12$	$236 \pm 63$	$99 \pm 25$	$1.69 \pm 0.44$
[S II] 6732	$40.34 \pm 0.08$	$236 \pm 63$	$99 \pm 25$	$4.38 \pm 0.46$

## Emission Summary

H $\alpha$ broad SNR	11.82
H $\beta$ broad SNR	4.90
H $\gamma$ broad SNR	1.58
AGN frac	0.66
Host frac	0.34
$\log L_{5100, \text{Host}}$	43.20
Fe II/H $\beta$	0.52
Fe II/[O III]	1.42

## Quality Flags

spurious_hab/hbb	0/0
15100	0
balmer	0
balmer_snr	1
hb_width	2
balmer_width	0