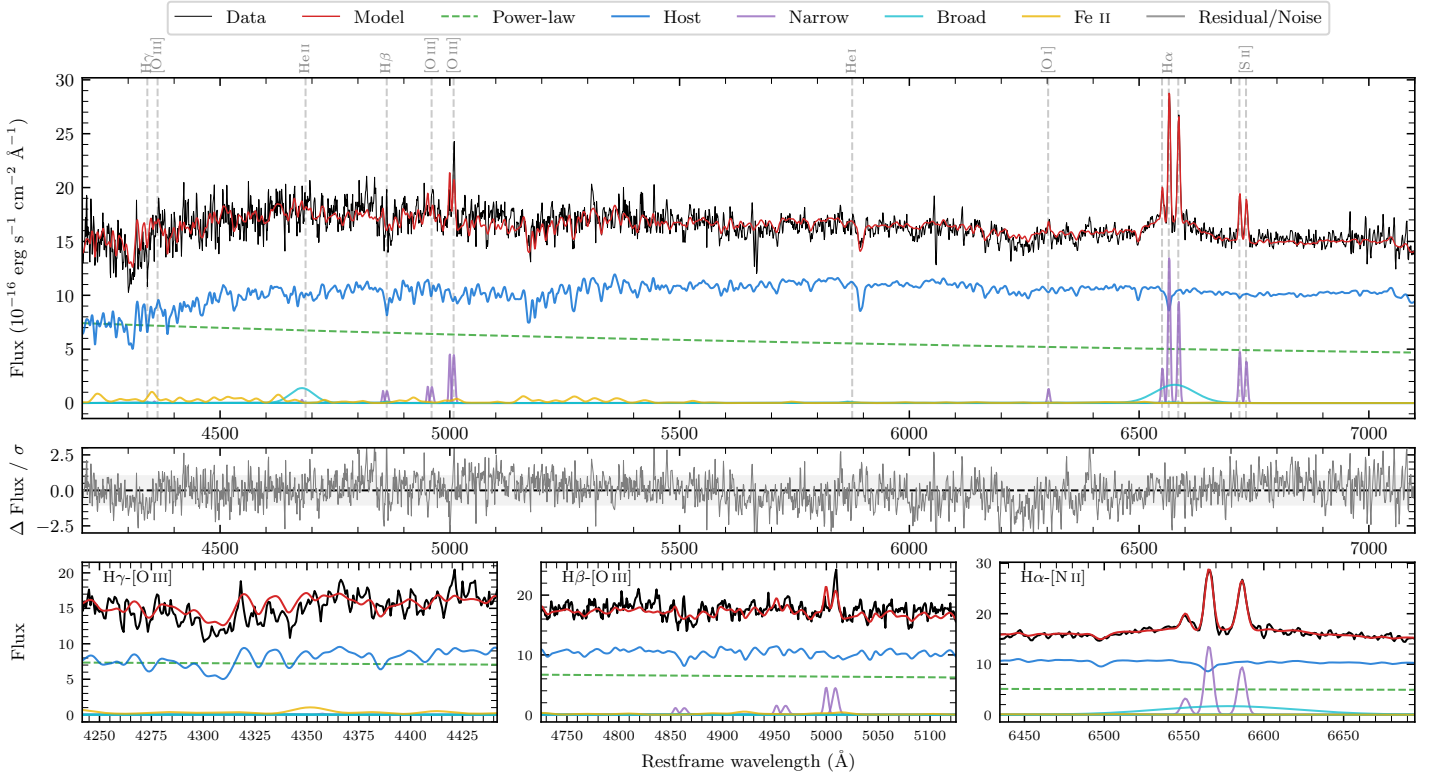
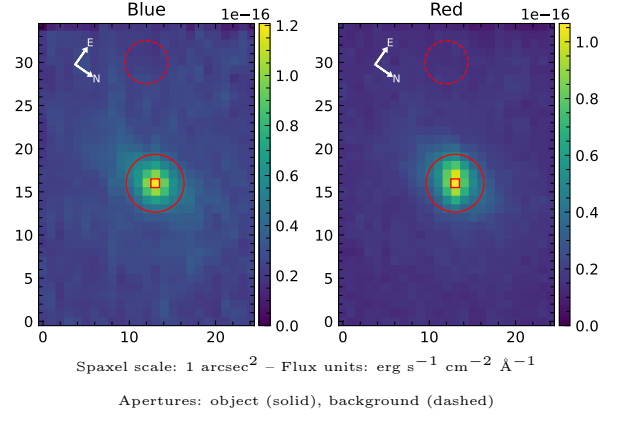


NGC 617

Spectrum ID	13733498_sp1	Spectrum type	Sy 1.5+
Alt name	g0134025-094627	Quality flag	good
z	0.0407	AGN reference	6dFGS
RA, Dec	23.5106, -9.7742	MW $E(B - V)$	0.028
MJD	60904.76	Power law α_ν	-1.13 ± 0.05
SNR/ \AA B/R	16.0/28.0	$\log L_{5100, \text{AGN}}$	43.09 ± 0.01
Obs airmass	1.08	$\log H\beta_{\text{Br}}/[\text{O III}]$	< 0.08
SMSS ID	13733498	$\log M_{L5100}/M_\odot$	—
Neighbour	None $< 15''$	$\log M_{\text{H}\alpha}/M_\odot$	7.12 ± 0.06
SMSS $\langle r_6''_{\text{ap}} \rangle$	15.67 ± 0.04	$\log M_{\text{H}\beta}/M_\odot$	—
2MASS K_{ext}	11.94 ± 0.08	$\log M_{[\text{O III}]} / M_\odot$	—



Emission Line Measurements

Line	$\log L$ (erg s ⁻¹)	FWHM (km s ⁻¹)	σ (km s ⁻¹)	EW (Å)
H γ Narrow	—	—	—	—
Hγ Broad	—	—	—	—
[O III] 4364	—	—	—	—
He II Narrow	—	—	—	—
He II Broad	40.55 ± 0.08	3820 ± 62	1622 ± 25	13.57 ± 1.35
H β Narrow	39.70 ± 0.21	—	299 ± 25	2.02 ± 0.43
Hβ Broad	< 40.40	—	—	—
[O III] 5007	40.32 ± 0.04	—	299 ± 25	8.61 ± 0.44
He I Narrow	—	—	—	—
He I Broad	39.13 ± 0.46	1269 ± 62	539 ± 25	0.63 ± 0.52
[O I] 6300	39.52 ± 0.11	278 ± 62	117 ± 25	1.65 ± 0.28
H α Narrow	40.55 ± 0.01	278 ± 62	117 ± 25	18.23 ± 0.33
Hα Broad	40.87 ± 0.03	4468 ± 131	1663 ± 25	38.22 ± 1.19
[N II] 6585	40.39 ± 0.02	278 ± 62	117 ± 25	12.67 ± 0.32
[S II] 6718	40.10 ± 0.03	278 ± 62	117 ± 25	6.63 ± 0.29
[S II] 6732	40.01 ± 0.04	278 ± 62	117 ± 25	5.41 ± 0.28

Emission Summary

H α broad SNR	1.69
H β broad SNR	0.30
H γ broad SNR	0.00
AGN frac	0.39
Host frac	0.61
$\log L_{5100, \text{Host}}$	43.28
Fe II/H β	—
Fe II/[O III]	2.24

Quality Flags

spurious_hab/hbb	0/0
15100	1
balmer	2
balmer_snr	2
hb_width	2
balmer_width	2