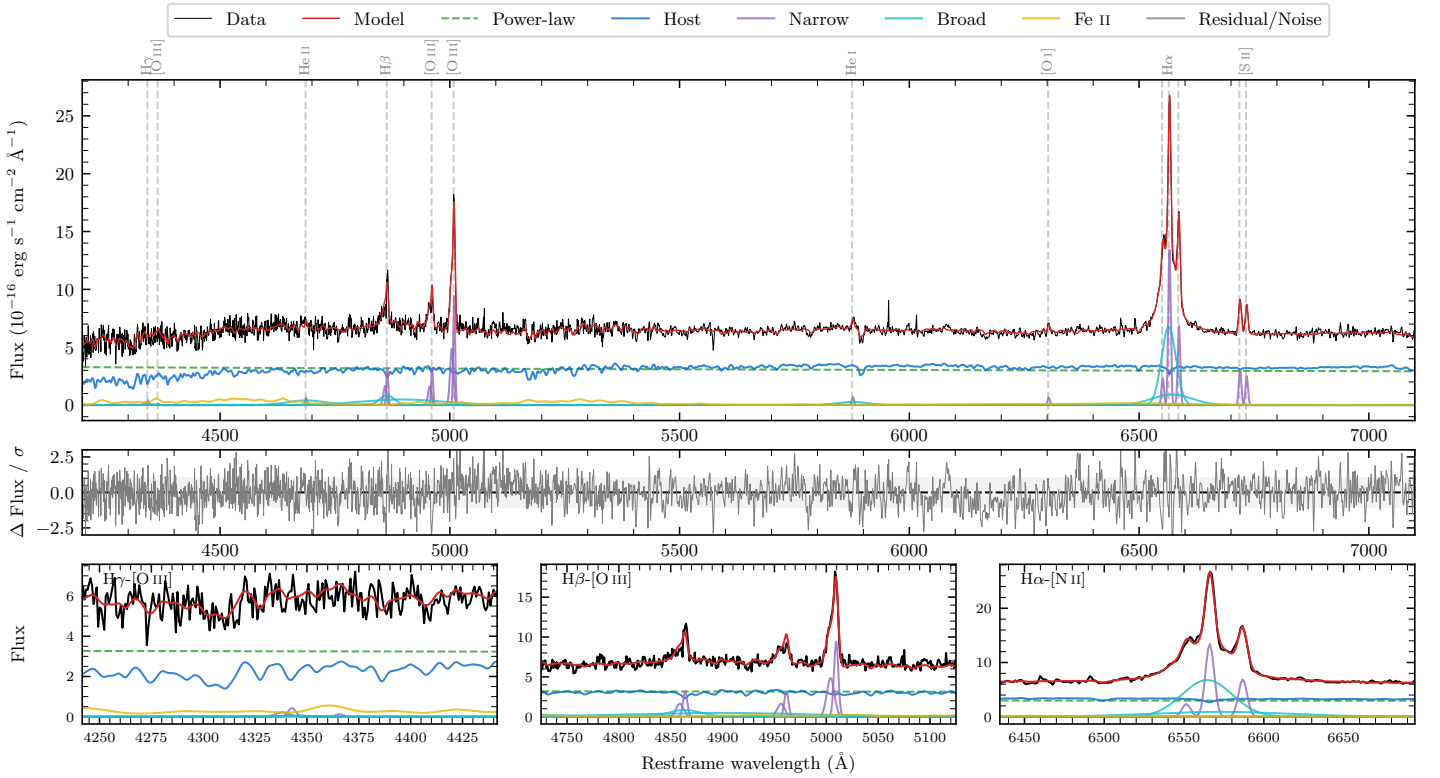
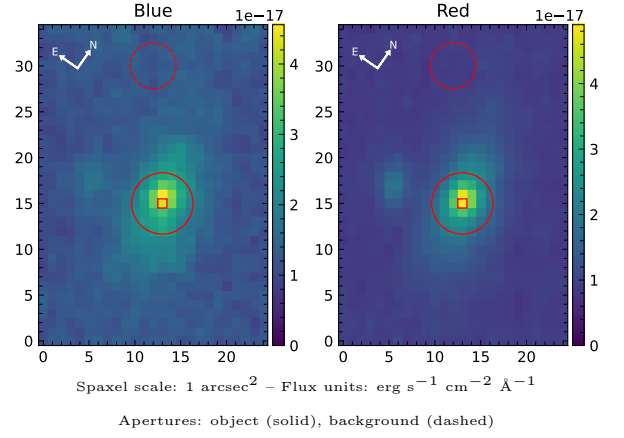


# LEDA 981816

Spectrum ID	13624525_sp1	Spectrum type	Sy 1.5
Alt name	g0110090-100844	Quality flag	good
$z$	0.0585	AGN reference	6dFGS
RA, Dec	17.5375, -10.1455	MW $E(B - V)$	0.030
MJD	60225.59	Power law $\alpha_\nu$	$-1.78 \pm 0.15$
SNR/ $\text{\AA}$ B/R	14.8/26.9	$\log L_{5100, \text{AGN}}$	$43.11 \pm 0.02$
Obs airmass	1.07	$\log H\beta_{\text{Br}}/[\text{O III}]$	$-0.45 \pm 0.35$
SMSS ID	13624525	$\log M_{L5100}/M_\odot$	$7.23 \pm 0.03$
Neighbour	7.7", 13624526	$\log M_{H\alpha}/M_\odot$	$6.72 \pm 0.04$
SMSS $\langle r_{6'' \text{ap}} \rangle$	$16.68 \pm 0.07$	$\log M_{H\beta}/M_\odot$	$6.85 \pm 0.18$
2MASS $K_{\text{ext}}$	$12.52 \pm 0.12$	$\log M_{[\text{O III}]} / M_\odot$	$7.18 \pm 0.04$



## Emission Line Measurements

Line	$\log L$ (erg s $^{-1}$ )	FWHM (km s $^{-1}$ )	$\sigma$ (km s $^{-1}$ )	EW ( $\text{\AA}$ )
H $\gamma$ Narrow	$39.51 \pm 0.27$	$410 \pm 68$	$238 \pm 26$	$1.22 \pm 0.43$
<b>H<math>\gamma</math> Broad</b>	—	—	—	—
[O III] 4364	—	—	—	—
He II Narrow	$39.41 \pm 0.22$	$293 \pm 63$	$124 \pm 25$	$0.99 \pm 0.30$
<b>He II Broad</b>	—	—	—	—
H $\beta$ Narrow	$40.43 \pm 0.04$	$410 \pm 68$	$238 \pm 25$	$10.30 \pm 0.41$
<b>H<math>\beta</math> Broad</b>	$40.46^{+0.63}_{-0.08}$	<b><math>2268 \pm 41</math></b>	<b><math>844 \pm 25</math></b>	<b><math>11.10 \pm 0.84</math></b>
[O III] 5007	$40.91 \pm 0.01$	$410 \pm 68$	$238 \pm 25$	$31.50 \pm 0.42$
He I Narrow	$39.57 \pm 0.09$	$293 \pm 63$	$124 \pm 25$	$1.49 \pm 0.20$
<b>He I Broad</b>	<b><math>40.29 \pm 0.08</math></b>	<b><math>3923 \pm 66</math></b>	<b><math>1666 \pm 27</math></b>	<b><math>7.97 \pm 0.81</math></b>
[O I] 6300	$39.55 \pm 0.13$	$293 \pm 63$	$124 \pm 25$	$1.44 \pm 0.22$
H $\alpha$ Narrow	$40.90 \pm 0.01$	$293 \pm 63$	$124 \pm 25$	$32.59 \pm 0.28$
<b>H<math>\alpha</math> Broad</b>	<b><math>41.50 \pm 0.01</math></b>	<b><math>1822 \pm 65</math></b>	<b><math>823 \pm 26</math></b>	<b><math>130.07 \pm 0.89</math></b>
[N II] 6585	$40.61 \pm 0.01$	$293 \pm 63$	$124 \pm 25$	$16.73 \pm 0.25$
[S II] 6718	$40.27 \pm 0.02$	$293 \pm 63$	$124 \pm 25$	$7.74 \pm 0.24$
[S II] 6732	$40.17 \pm 0.02$	$293 \pm 63$	$124 \pm 25$	$6.23 \pm 0.22$

## Emission Summary

H $\alpha$ broad SNR	17.63
H $\beta$ broad SNR	1.95
H $\gamma$ broad SNR	0.35
AGN frac	0.52
Host frac	0.48
$\log L_{5100, \text{Host}}$	43.08
Fe II/H $\beta$	—
Fe II/[O III]	—

## Quality Flags

spurious_hab/hbb	0/2
15100	0
balmer	1
balmer_snr	2
hb_width	0
balmer_width	0