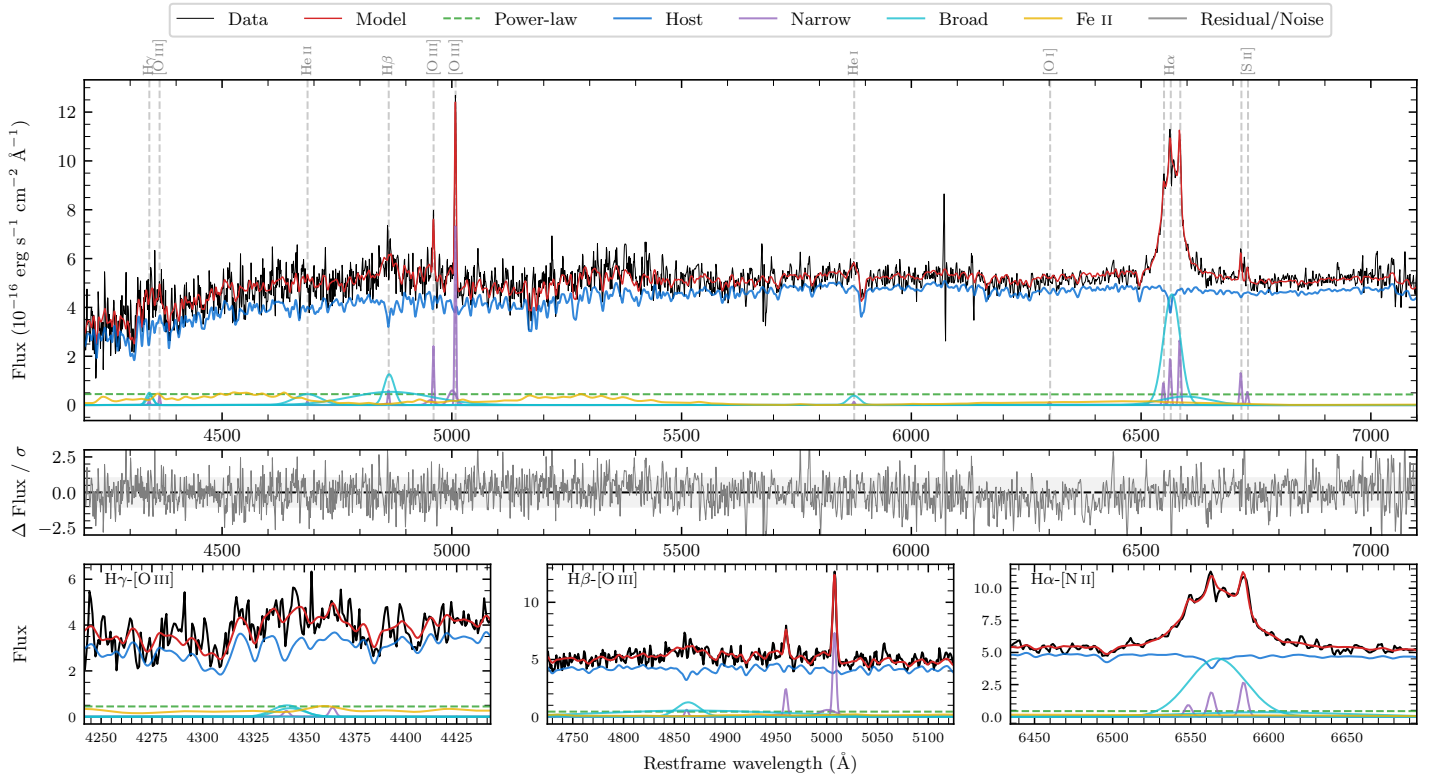
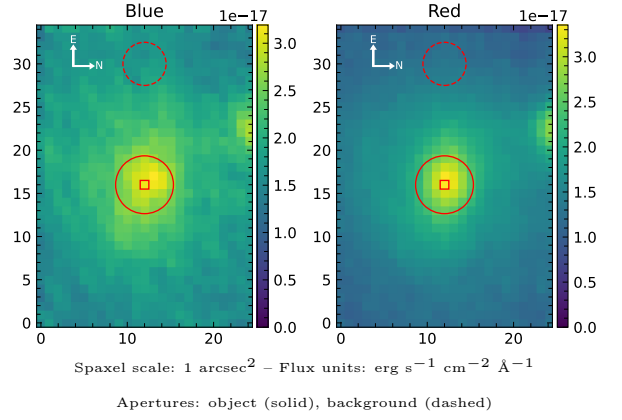


Spectrum ID	13357160_sp1	Spectrum type	Sy 1.5
Alt name	g0024191–013818	Quality flag	good
z	0.0376	AGN reference	6dFGS
RA, Dec	6.0796, –1.6382	MW $E(B - V)$	0.029
MJD	60209.64	Power law α_ν	-1.94 ± 0.06
SNR/Å B/R	10.4/20.7	$\log L_{5100, \text{AGN}}$	41.88 ± 0.14
Obs airmass	1.19	$\log H\beta_{\text{Br}}/[\text{O III}]$	-0.08 ± 0.35
SMSS ID	13357160	$\log M_{L5100}/M_\odot$	6.43 ± 0.08
Neighbour	5.3", 2024737676	$\log M_{\text{H}\alpha}/M_\odot$	6.48 ± 0.05
SMSS $\langle r_{6'' \text{ap}} \rangle$	16.44 ± 0.07	$\log M_{\text{H}\beta}/M_\odot$	6.41 ± 0.18
2MASS K_{ext}	11.50 ± 0.08	$\log M_{[\text{O III}]} / M_\odot$	6.54 ± 0.06



Emission Line Measurements

Line	$\log L$ (erg s $^{-1}$)	FWHM (km s $^{-1}$)	σ (km s $^{-1}$)	EW (Å)
H γ Narrow	–	–	–	–
Hγ Broad	39.79 ± 0.11	1184 ± 63	432 ± 25	36.66 ± 5.53
[O III] 4364	38.72 ± 0.38	244 ± 63	102 ± 25	3.53 ± 2.41
He II Narrow	–	–	–	–
He II Broad	–	–	–	–
H β Narrow	39.09 ± 0.27	253 ± 63	335 ± 38	8.39 ± 4.24
Hβ Broad	$40.09^{+0.64}_{-0.06}$	1652 ± 26	639 ± 25	83.79 ± 5.47
[O III] 5007	40.17 ± 0.03	253 ± 63	335 ± 38	102.33 ± 4.46
He I Narrow	38.39 ± 0.44	244 ± 63	102 ± 25	1.69 ± 1.27
He I Broad	39.63 ± 0.09	1554 ± 63	660 ± 25	29.40 ± 3.38
[O I] 6300	38.35 ± 0.42	244 ± 63	102 ± 25	1.55 ± 1.28
H α Narrow	39.56 ± 0.05	244 ± 63	102 ± 25	25.49 ± 1.47
Hα Broad	40.94 ± 0.01	2042 ± 65	864 ± 39	600.07 ± 6.62
[N II] 6585	39.71 ± 0.04	244 ± 63	102 ± 25	35.95 ± 1.65
[S II] 6718	39.41 ± 0.06	244 ± 63	102 ± 25	17.96 ± 1.37
[S II] 6732	39.04 ± 0.12	244 ± 63	102 ± 25	7.56 ± 1.35

Emission Summary

H α broad SNR	10.26
H β broad SNR	2.67
H γ broad SNR	2.10
AGN frac	0.10
Host frac	0.90
$\log L_{5100, \text{Host}}$	42.82
Fe II/H β	–
Fe II/[O III]	–

Quality Flags

spurious_hab/hbb	0/1
15100	2
balmer	1
balmer_snr	1
hb_width	0
balmer_width	2