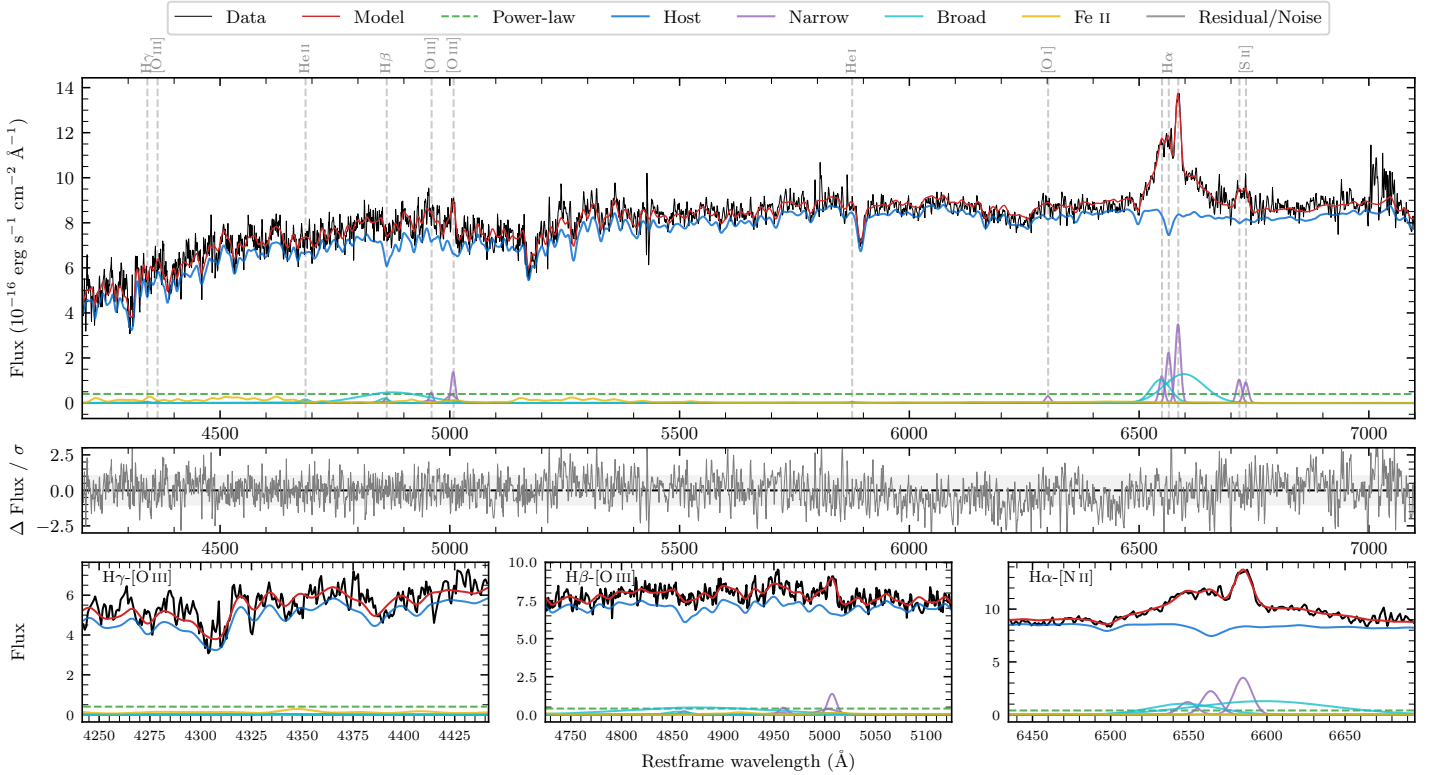
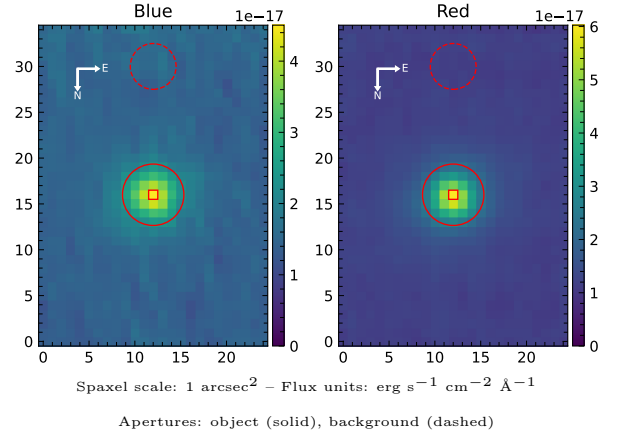


LEDA 138131

Spectrum ID	13188680_sp2	Spectrum type	Sy 1.2
Alt name	g0009395-021437	Quality flag	good
z	0.0855	AGN reference	6dFGS
RA, Dec	2.4148, -2.2436	MW $E(B - V)$	0.031
MJD	60224.49	Power law α_ν	-1.98 ± 0.02
SNR/ \AA B/R	16.4/30.3	$\log L_{5100, \text{AGN}}$	42.57 ± 0.32
Obs airmass	1.24	$\log H\beta_{\text{Br}}/[\text{O III}]$	0.58 ± 0.09
SMSS ID	13188680	$\log M_{L5100}/M_\odot$	8.05 ± 0.28
Neighbour	None $< 15''$	$\log M_{\text{H}\alpha}/M_\odot$	7.67 ± 0.03
SMSS $\langle r_6''_{\text{ap}} \rangle$	16.37 ± 0.06	$\log M_{\text{H}\beta}/M_\odot$	8.26 ± 0.25
2MASS K_{ext}	12.07 ± 0.07	$\log M_{[\text{O III}]} / M_\odot$	8.12 ± 0.25



Emission Line Measurements

Line	$\log L$ (erg s ⁻¹)	FWHM (km s ⁻¹)	σ (km s ⁻¹)	EW (Å)
H γ Narrow	–	–	–	–
Hγ Broad	–	–	–	–
[O III] 4364	–	–	–	–
He II Narrow	–	–	–	–
He II Broad	39.90 ± 0.37	1487 ± 62	631 ± 25	10.80 ± 5.94
H β Narrow	39.90 ± 0.36	695 ± 89	437 ± 68	10.52 ± 5.36
Hβ Broad	41.26 ± 0.06	7614 ± 2263	3670 ± 83	245.83 ± 16.75
[O III] 5007	40.68 ± 0.07	695 ± 89	437 ± 67	64.90 ± 5.96
He I Narrow	–	–	–	–
He I Broad	–	–	–	–
[O I] 6300	39.91 ± 0.19	611 ± 62	259 ± 25	11.28 ± 3.03
H α Narrow	40.80 ± 0.03	611 ± 62	259 ± 25	86.17 ± 2.83
Hα Broad	41.59 ± 0.02	5135 ± 128	1746 ± 25	531.70 ± 8.85
[N II] 6585	40.99 ± 0.02	611 ± 62	259 ± 25	135.79 ± 2.93
[S II] 6718	40.47 ± 0.06	611 ± 62	259 ± 25	40.99 ± 3.87
[S II] 6732	40.42 ± 0.07	611 ± 62	259 ± 25	36.13 ± 3.87

Emission Summary

H α broad SNR	3.85
H β broad SNR	1.49
H γ broad SNR	0.00
AGN frac	0.05
Host frac	0.95
$\log L_{5100, \text{Host}}$	43.81
Fe II/H β	0.63
Fe II/[O III]	2.38

Quality Flags

spurious_hab/hbb	0/0
15100	2
balmer	1
balmer_snr	2
hb_width	0
balmer_width	0