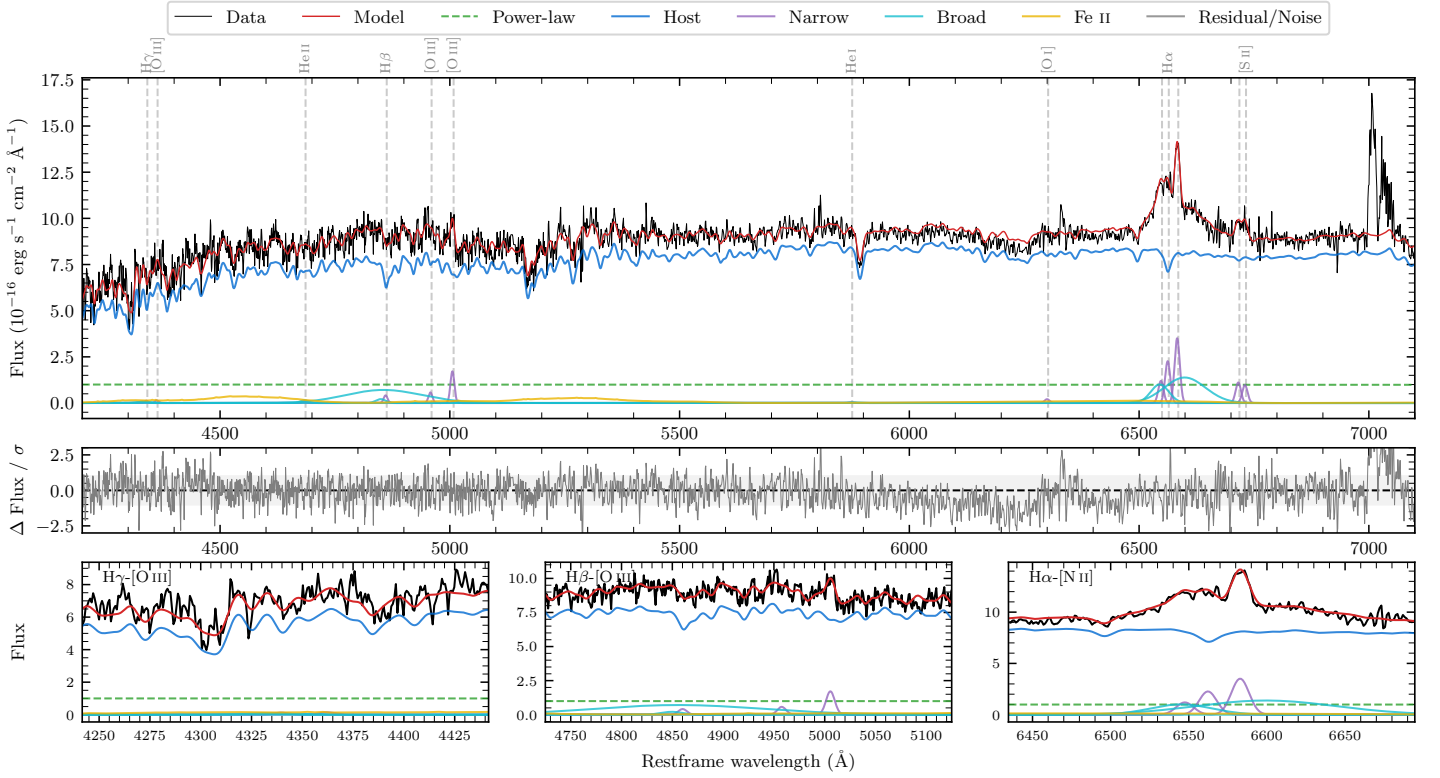
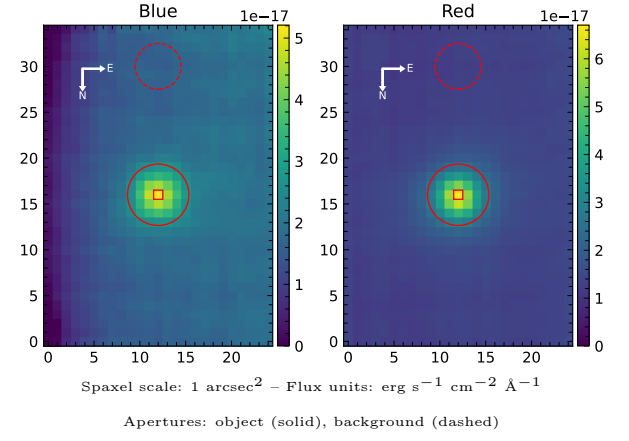


LEDA 138131

Spectrum ID	13188680_sp1	Spectrum type	Sy 1.0
Alt name	g0009395-021437	Quality flag	good
z	0.0855	AGN reference	6dFGS
RA, Dec	2.4148, -2.2436	MW $E(B - V)$	0.031
MJD	60224.49	Power law α_ν	-1.97 ± 0.03
SNR/ \AA B/R	16.3/25.1	$\log L_{5100, \text{AGN}}$	42.97 ± 0.06
Obs airmass	1.24	$\log H\beta_{\text{Br}}/[\text{O III}]$	0.88 ± 0.07
SMSS ID	13188680	$\log M_{L5100}/M_\odot$	8.42 ± 0.17
Neighbour	None $< 15''$	$\log M_{\text{H}\alpha}/M_\odot$	7.73 ± 0.03
SMSS $\langle r_6 \rangle_{\text{ap}}$	16.37 ± 0.06	$\log M_{\text{H}\beta}/M_\odot$	8.56 ± 0.17
2MASS K_{ext}	12.07 ± 0.07	$\log M_{[\text{O III}]} / M_\odot$	8.28 ± 0.18



Emission Line Measurements

Line	$\log L$ (erg s ⁻¹)	FWHM (km s ⁻¹)	σ (km s ⁻¹)	EW (Å)
H γ Narrow	–	–	–	–
Hγ Broad	–	–	–	–
[O III] 4364	–	–	–	–
He II Narrow	–	–	–	–
He II Broad	39.81 ± 0.42	1255 ± 62	533 ± 25	3.53 ± 2.51
H β Narrow	40.00 ± 0.26	617 ± 64	267 ± 27	5.13 ± 1.79
Hβ Broad	41.48 ± 0.05	9534 ± 1945	4346 ± 65	167.00 ± 8.45
[O III] 5007	40.61 ± 0.06	617 ± 64	267 ± 27	21.73 ± 1.90
He I Narrow	–	–	–	–
He I Broad	–	–	–	–
[O I] 6300	39.75 ± 0.31	608 ± 62	257 ± 25	3.10 ± 1.42
H α Narrow	40.80 ± 0.04	608 ± 62	257 ± 25	35.15 ± 1.40
Hα Broad	41.61 ± 0.02	5429 ± 147	1805 ± 25	224.71 ± 4.38
[N II] 6585	40.99 ± 0.02	608 ± 62	257 ± 25	54.66 ± 1.44
[S II] 6718	40.50 ± 0.07	608 ± 62	257 ± 25	17.66 ± 1.82
[S II] 6732	40.45 ± 0.08	608 ± 62	257 ± 25	15.60 ± 1.76

Emission Summary

H α broad SNR	3.24
H β broad SNR	1.74
H γ broad SNR	0.41
AGN frac	0.12
Host frac	0.88
$\log L_{5100, \text{Host}}$	43.83
Fe II/H β	0.55
Fe II/[O III]	4.21

Quality Flags

spurious_hab/hbb	0/0
15100	2
balmer	1
balmer_snr	2
hb_width	0
balmer_width	0