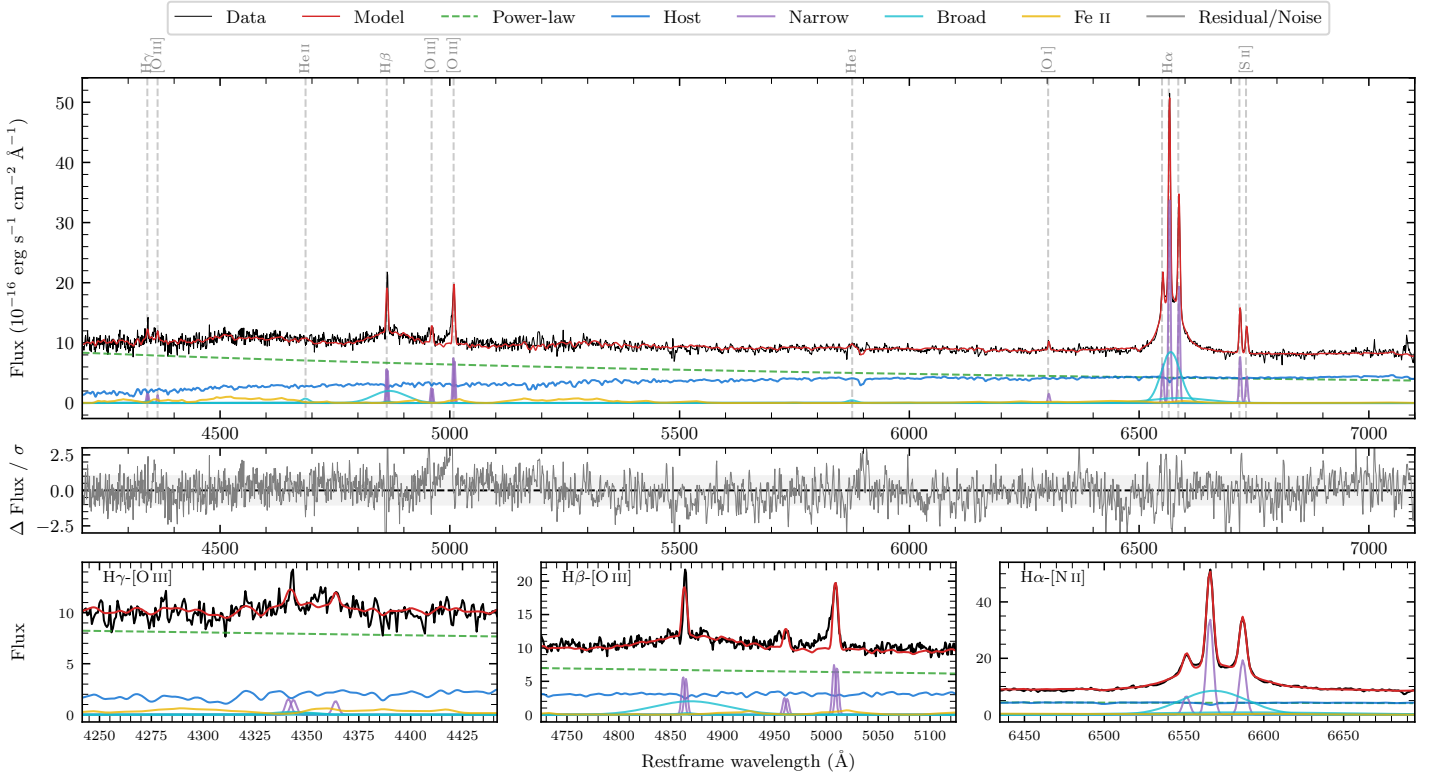
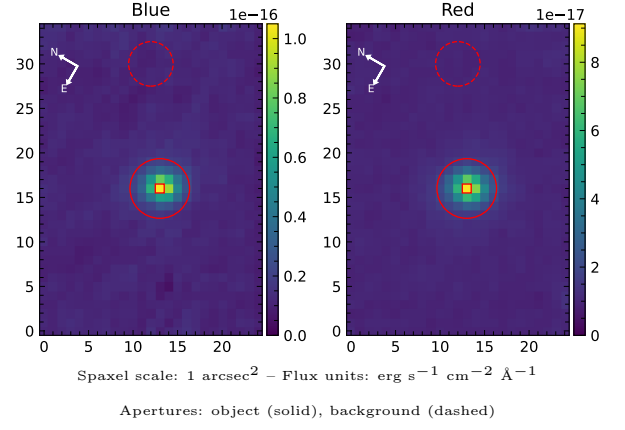


# LEDA 1040986

Spectrum ID	13137963_sp1	Spectrum type	Sy 1.2
Alt name	g0016379-054425	Quality flag	good
$z$	0.0743	AGN reference	6dFGS
RA, Dec	4.1580, -5.7402	MW $E(B - V)$	0.027
MJD	60226.49	Power law $\alpha_\nu$	$-0.47 \pm 0.13$
SNR/ $\text{\AA}$ B/R	15.2/23.7	$\log L_{5100, \text{AGN}}$	$43.63 \pm 0.02$
Obs airmass	1.19	$\log H\beta_{\text{Br}}/[\text{O III}]$	$0.49 \pm 0.03$
SMSS ID	13137963	$\log M_{L5100}/M_\odot$	$8.10 \pm 0.06$
Neighbour	None $< 15''$	$\log M_{\text{H}\alpha}/M_\odot$	$7.20 \pm 0.03$
SMSS $\langle r_6'' \text{ ap} \rangle$	$16.01 \pm 0.09$	$\log M_{\text{H}\beta}/M_\odot$	$7.93 \pm 0.07$
2MASS $K_{\text{ext}}$	$12.35 \pm 0.09$	$\log M_{[\text{O III}]} / M_\odot$	$7.84 \pm 0.07$



## Emission Line Measurements

Line	$\log L$ ( $\text{erg s}^{-1}$ )	FWHM ( $\text{km s}^{-1}$ )	$\sigma$ ( $\text{km s}^{-1}$ )	EW ( $\text{\AA}$ )
H $\gamma$ Narrow	$40.20 \pm 0.14$	$346 \pm 64$	$129 \pm 25$	$1.46 \pm 0.21$
<b>H<math>\gamma</math> Broad</b>	—	—	—	—
[O III] 4364	$39.85 \pm 0.20$	$235 \pm 62$	$99 \pm 25$	$0.66 \pm 0.19$
He II Narrow	—	—	—	—
<b>He II Broad</b>	<b><math>40.39 \pm 0.13</math></b>	<b><math>1391 \pm 67</math></b>	<b><math>590 \pm 27</math></b>	<b><math>2.58 \pm 0.45</math></b>
H $\beta$ Narrow	$40.81 \pm 0.03$	$346 \pm 64$	$129 \pm 25$	$7.12 \pm 0.22$
<b>H<math>\beta</math> Broad</b>	<b><math>41.43 \pm 0.03</math></b>	<b><math>4735 \pm 338</math></b>	<b><math>1861 \pm 33</math></b>	<b><math>29.61 \pm 0.96</math></b>
[O III] 5007	$40.94 \pm 0.02$	$346 \pm 64$	$129 \pm 25$	$10.12 \pm 0.25$
He I Narrow	$39.27 \pm 0.42$	$235 \pm 62$	$99 \pm 25$	$0.28 \pm 0.20$
<b>He I Broad</b>	<b><math>40.23 \pm 0.14</math></b>	<b><math>1204 \pm 66</math></b>	<b><math>511 \pm 27</math></b>	<b><math>2.46 \pm 0.42</math></b>
[O I] 6300	$40.07 \pm 0.07$	$235 \pm 62$	$99 \pm 25$	$1.92 \pm 0.17$
H $\alpha$ Narrow	$41.43 \pm 0.01$	$235 \pm 62$	$99 \pm 25$	$46.92 \pm 0.28$
<b>H<math>\alpha</math> Broad</b>	<b><math>41.92 \pm 0.01</math></b>	<b><math>2353 \pm 66</math></b>	<b><math>1032 \pm 32</math></b>	<b><math>145.43 \pm 1.22</math></b>
[N II] 6585	$41.19 \pm 0.01$	$235 \pm 62$	$99 \pm 25$	$26.95 \pm 0.25$
[S II] 6718	$40.79 \pm 0.02$	$235 \pm 62$	$99 \pm 25$	$11.22 \pm 0.22$
[S II] 6732	$40.57 \pm 0.02$	$235 \pm 62$	$99 \pm 25$	$6.68 \pm 0.27$

## Emission Summary

H $\alpha$ broad SNR	14.36
H $\beta$ broad SNR	3.53
H $\gamma$ broad SNR	0.97
AGN frac	0.67
Host frac	0.33
$\log L_{5100, \text{Host}}$	43.33
Fe II/H $\beta$	1.07
Fe II/[O III]	3.27

## Quality Flags

spurious_hab/hbb	0/0
15100	0
balmer	0
balmer_snr	2
hb_width	0
balmer_width	1