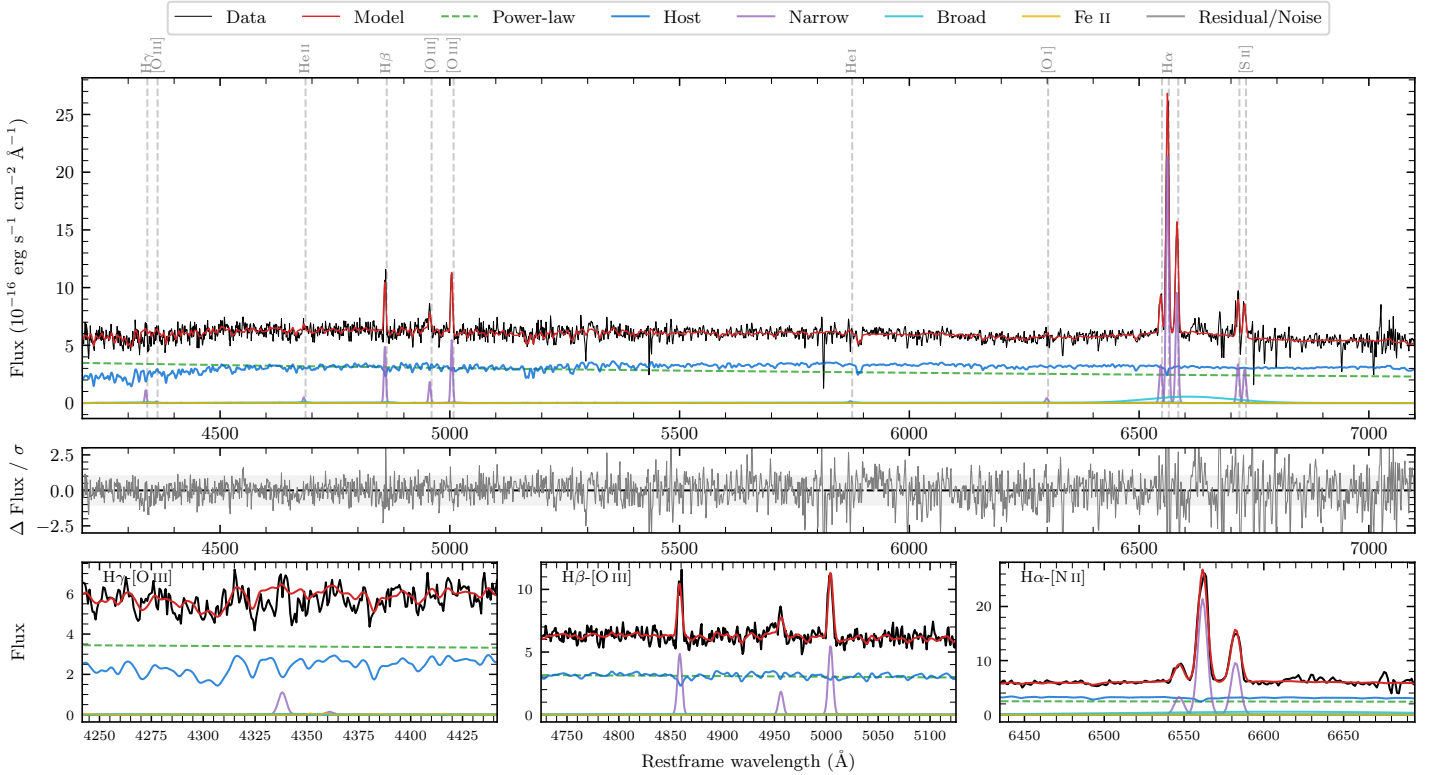
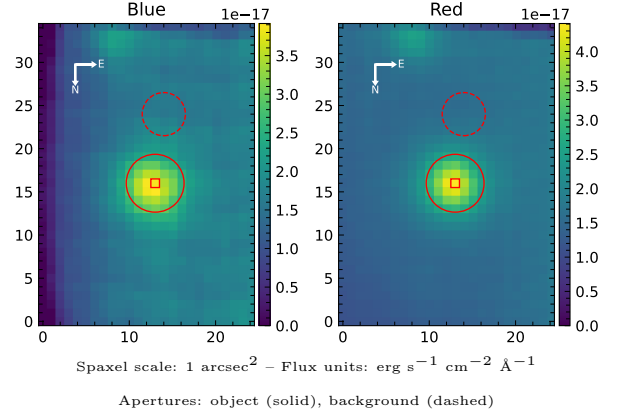


LEDA 946

Spectrum ID	13121698_sp2	Spectrum type	Sy 2
Alt name	g0014181-051904	Quality flag	good
z	0.0832	AGN reference	6dFGS
RA, Dec	3.5755, -5.3181	MW $E(B - V)$	0.027
MJD	60477.79	Power law α_ν	-1.21 ± 0.05
SNR/ \AA B/R	9.0/16.4	$\log L_{5100, \text{AGN}}$	43.43 ± 0.02
Obs airmass	1.21	$\log H\beta_{\text{Br}}/[\text{O III}]$	—
SMSS ID	13121698	$\log M_{L5100}/M_\odot$	—
Neighbour	None $< 15''$	$\log M_{H\alpha}/M_\odot$	—
SMSS $\langle r_6'' \text{ap} \rangle$	16.42 ± 0.02	$\log M_{H\beta}/M_\odot$	—
2MASS K_{ext}	12.82 ± 0.10	$\log M_{[\text{O III}]} / M_\odot$	—



Emission Line Measurements

Line	$\log L$ (erg s ⁻¹)	FWHM (km s ⁻¹)	σ (km s ⁻¹)	EW (Å)
H γ Narrow	40.03 ± 0.21	318 ± 62	159 ± 33	1.78 ± 0.90
Hγ Broad	—	—	—	—
[O III] 4364	—	—	—	—
He II Narrow	39.70 ± 0.35	317 ± 62	133 ± 25	0.89 ± 0.49
He II Broad	—	—	—	—
H β Narrow	40.72 ± 0.05	318 ± 62	159 ± 33	9.51 ± 0.91
Hβ Broad	—	—	—	—
[O III] 5007	40.79 ± 0.04	318 ± 62	159 ± 33	11.34 ± 1.03
He I Narrow	39.33 ± 0.50	317 ± 62	133 ± 25	0.46 ± 0.37
He I Broad	39.58 ± 0.49	1184 ± 62	503 ± 25	0.81 ± 0.66
[O I] 6300	39.76 ± 0.24	317 ± 62	133 ± 25	1.31 ± 0.39
H α Narrow	41.47 ± 0.01	317 ± 62	133 ± 25	69.21 ± 0.41
Hα Broad	—	—	—	—
[N II] 6585	41.13 ± 0.01	317 ± 62	133 ± 25	31.39 ± 0.39
[S II] 6718	40.68 ± 0.04	317 ± 62	133 ± 25	11.47 ± 0.56
[S II] 6732	40.62 ± 0.04	317 ± 62	133 ± 25	9.84 ± 0.49

Emission Summary

H α broad SNR	0.94
H β broad SNR	0.00
H γ broad SNR	0.00
AGN frac	0.49
Host frac	0.51
$\log L_{5100, \text{Host}}$	43.44
Fe II/H β	—
Fe II/[O III]	—

Quality Flags

spurious_hab/hbb	0/0
15100	1
balmer	2
balmer_snr	2
hb_width	2
balmer_width	2