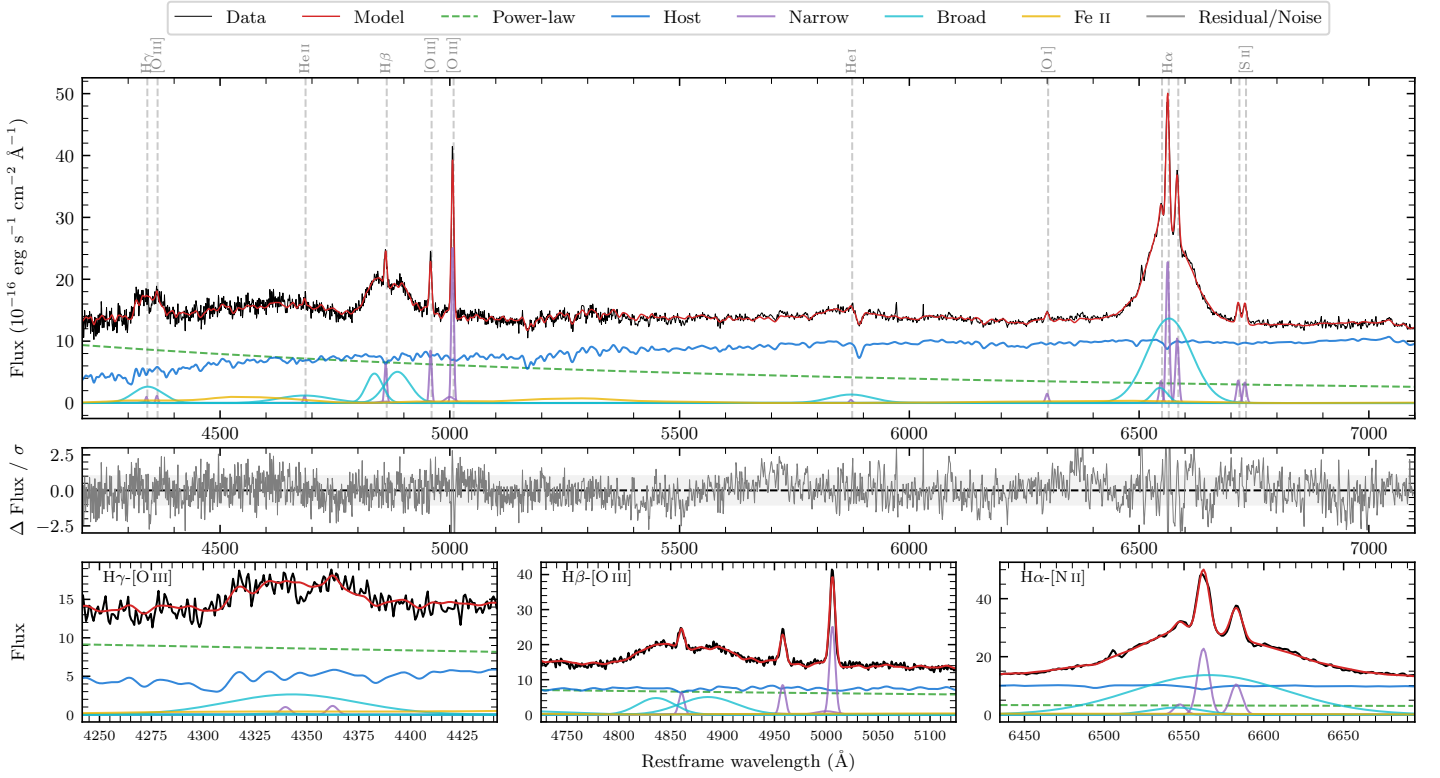
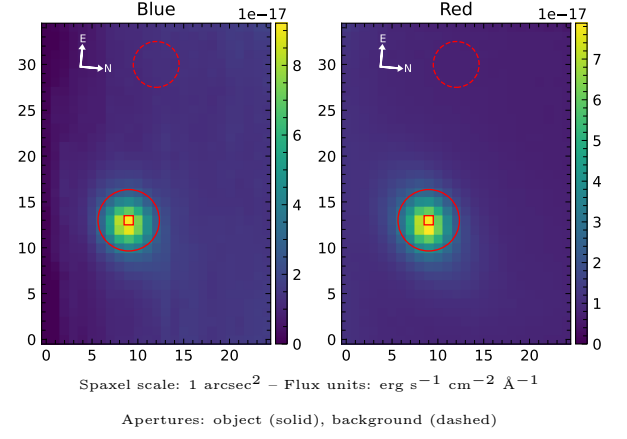


LEDA 1014434

Spectrum ID	13037273_sp1	Spectrum type	Sy 1.2
Alt name	g0040528-074209	Quality flag	good
z	0.0546	AGN reference	6dFGS
RA, Dec	10.2200, -7.7024	MW $E(B - V)$	0.039
MJD	59079.76	Power law α_ν	0.43 ± 0.06
SNR/ \AA B/R	19.7/37.1	$\log L_{5100, \text{AGN}}$	43.33 ± 0.01
Obs airmass	1.15	$\log H\beta_{\text{Br}}/[\text{O III}]$	0.45 ± 0.01
SMSS ID	13037273	$\log M_{L5100}/M_\odot$	8.17 ± 0.02
Neighbour	None $< 15''$	$\log M_{\text{H}\alpha}/M_\odot$	7.94 ± 0.01
SMSS $\langle r_6'' \text{ap} \rangle$	15.66 ± 0.02	$\log M_{\text{H}\beta}/M_\odot$	8.22 ± 0.02
2MASS K_{ext}	11.73 ± 0.06	$\log M_{[\text{O III}]} / M_\odot$	8.16 ± 0.02



Emission Line Measurements

Line	$\log L$ (erg s ⁻¹)	FWHM (km s ⁻¹)	σ (km s ⁻¹)	EW (Å)
H γ Narrow	39.72 ± 0.24	402 ± 63	285 ± 33	0.84 ± 0.43
Hγ Broad	41.22 ± 0.03	4935 ± 249	1895 ± 42	26.15 ± 0.95
[O III] 4364	39.72 ± 0.21	390 ± 63	165 ± 25	0.86 ± 0.25
He II Narrow	39.76 ± 0.16	390 ± 63	165 ± 25	1.11 ± 0.26
He II Broad	41.12 ± 0.04	8581 ± 151	3644 ± 63	25.48 ± 1.27
H β Narrow	40.56 ± 0.03	402 ± 63	286 ± 33	7.73 ± 0.52
Hβ Broad	41.63 ± 0.01	5988 ± 82	1975 ± 29	89.91 ± 0.95
[O III] 5007	41.18 ± 0.01	402 ± 63	286 ± 33	34.43 ± 0.57
He I Narrow	39.51 ± 0.18	390 ± 63	165 ± 25	1.08 ± 0.25
He I Broad	41.09 ± 0.02	5592 ± 91	2375 ± 37	40.80 ± 1.03
[O I] 6300	40.00 ± 0.05	390 ± 63	165 ± 25	3.93 ± 0.30
H α Narrow	41.20 ± 0.01	390 ± 63	165 ± 25	68.77 ± 0.46
Hα Broad	42.12 ± 0.01	4787 ± 73	1855 ± 25	580.61 ± 1.42
[N II] 6585	40.86 ± 0.01	390 ± 63	165 ± 25	31.87 ± 0.43
[S II] 6718	40.41 ± 0.02	390 ± 63	165 ± 25	11.93 ± 0.37
[S II] 6732	40.37 ± 0.02	390 ± 63	165 ± 25	10.97 ± 0.38

Emission Summary

H α broad SNR	21.94
H β broad SNR	8.38
H γ broad SNR	4.06
AGN frac	0.44
Host frac	0.56
$\log L_{5100, \text{Host}}$	43.43
Fe II/H β	0.42
Fe II/[O III]	1.18

Quality Flags

spurious_hab/hbb	0/0
15100	2
balmer	0
balmer_snr	0
hb_width	0
balmer_width	0