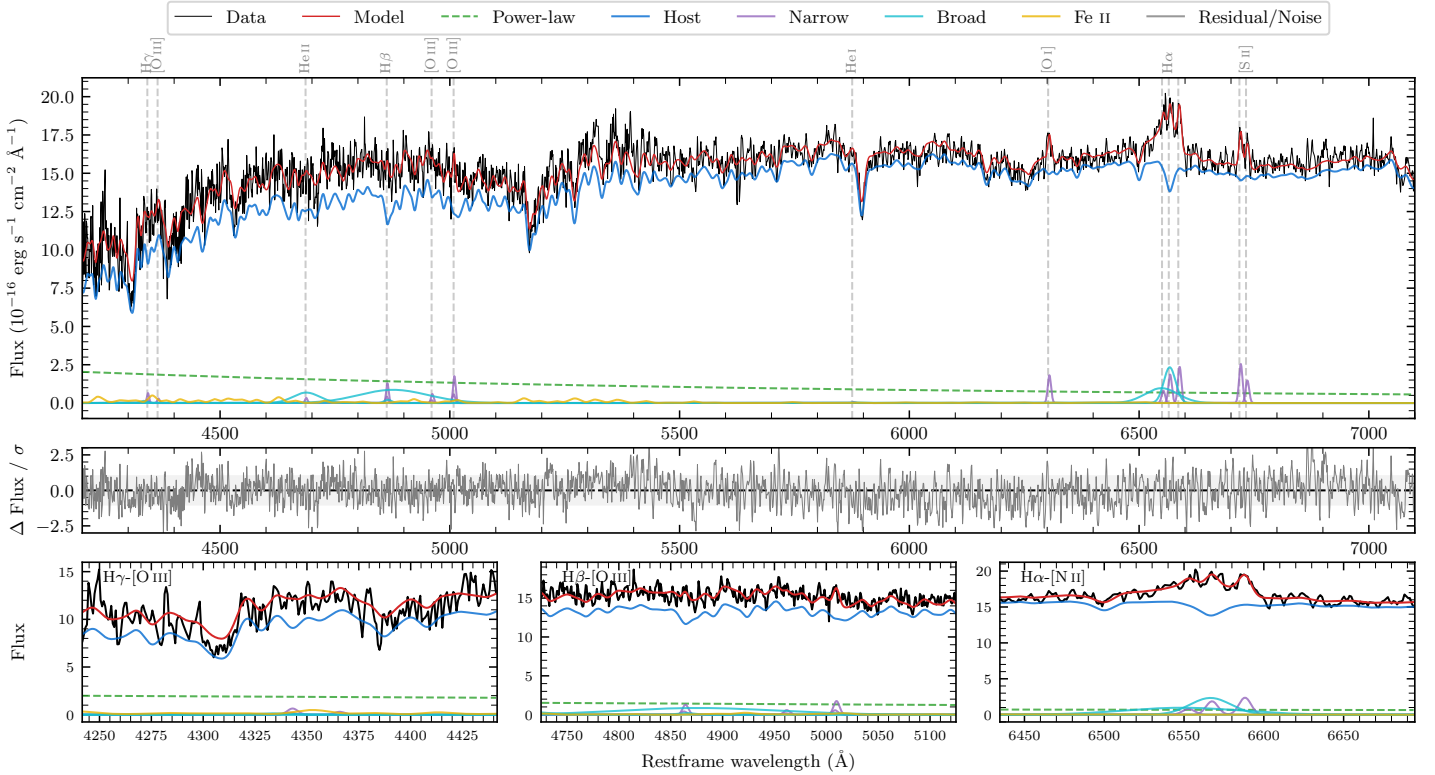
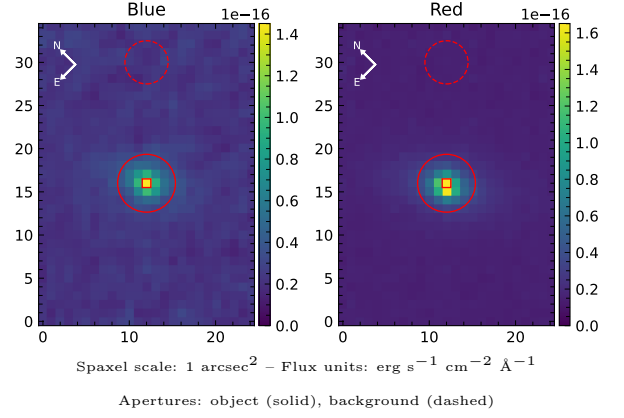


2MASX J00274641–1015462

Spectrum ID	12910272_sp1	Spectrum type	Sy 1.0
Alt name	g0027464–101547	Quality flag	good
z	0.0476	AGN reference	6dFGS
RA, Dec	6.9433, –10.2630	MW $E(B - V)$	0.033
MJD	60931.6	Power law α_ν	0.45 ± 0.05
SNR/Å B/R	15.6/32.0	$\log L_{5100, \text{AGN}}$	42.53 ± 0.04
Obs airmass	1.08	$\log H\beta_{\text{Br}}/[\text{O III}]$	0.98 ± 0.11
SMSS ID	12910272	$\log M_{L5100}/M_\odot$	8.20 ± 0.15
Neighbour	8.0", 2024072032	$\log M_{\text{H}\alpha}/M_\odot$	6.34 ± 0.07
SMSS $\langle r_6^{\text{ap}} \rangle$	15.72 ± 0.03	$\log M_{\text{H}\beta}/M_\odot$	8.29 ± 0.16
2MASS K_{ext}	11.88 ± 0.08	$\log M_{[\text{O III}]} / M_\odot$	7.94 ± 0.17



Emission Line Measurements

Line	$\log L$ (erg s^{-1})	FWHM (km s^{-1})	σ (km s^{-1})	EW (\AA)
H γ Narrow	39.50 ± 0.32	414 ± 63	175 ± 25	3.00 ± 1.57
Hγ Broad	—	—	—	—
[O III] 4364	—	—	—	—
He II Narrow	—	—	—	—
He II Broad	40.44 ± 0.14	4336 ± 62	1841 ± 25	33.27 ± 5.32
H β Narrow	39.86 ± 0.15	414 ± 63	175 ± 25	8.80 ± 1.73
Hβ Broad	40.98 ± 0.06	9152 ± 1573	3947 ± 49	124.34 ± 9.16
[O III] 5007	39.99 ± 0.09	414 ± 63	175 ± 25	13.36 ± 1.88
He I Narrow	—	—	—	—
He I Broad	—	—	—	—
[O I] 6300	39.96 ± 0.07	409 ± 62	172 ± 25	22.94 ± 1.92
H α Narrow	39.99 ± 0.11	409 ± 62	172 ± 25	27.21 ± 2.75
Hα Broad	40.96 ± 0.03	1711 ± 109	955 ± 42	249.33 ± 7.40
[N II] 6585	40.10 ± 0.06	409 ± 62	172 ± 25	34.99 ± 3.22
[S II] 6718	40.14 ± 0.04	409 ± 62	172 ± 25	40.29 ± 2.37
[S II] 6732	39.90 ± 0.08	409 ± 62	172 ± 25	23.46 ± 2.38

Emission Summary

H α broad SNR	3.47
H β broad SNR	1.19
H γ broad SNR	0.00
AGN frac	0.09
Host frac	0.91
$\log L_{5100, \text{Host}}$	43.55
Fe II/H β	0.35
Fe II/[O III]	3.46

Quality Flags

spurious_hab/hbb	0/0
15100	2
balmer	2
balmer_snr	2
hb_width	0
balmer_width	1