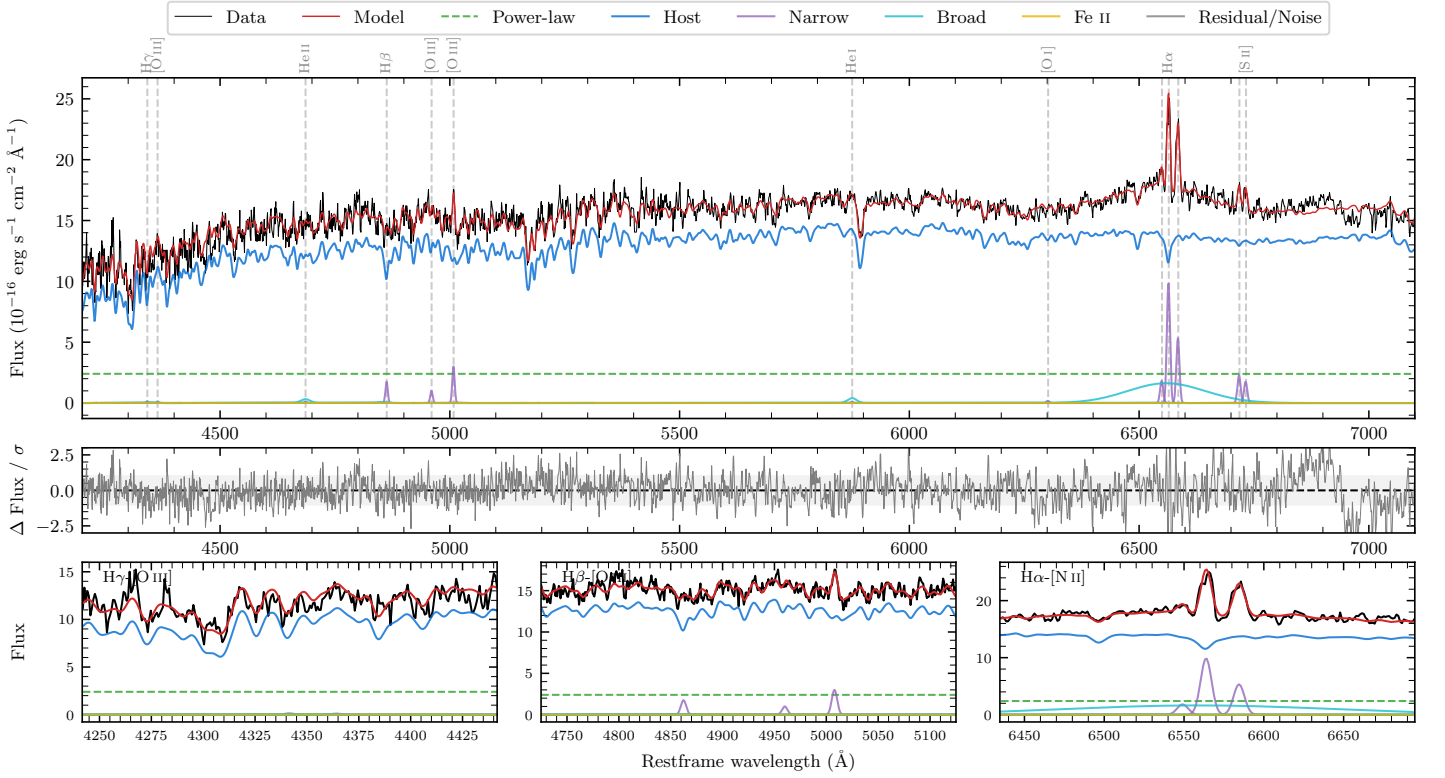
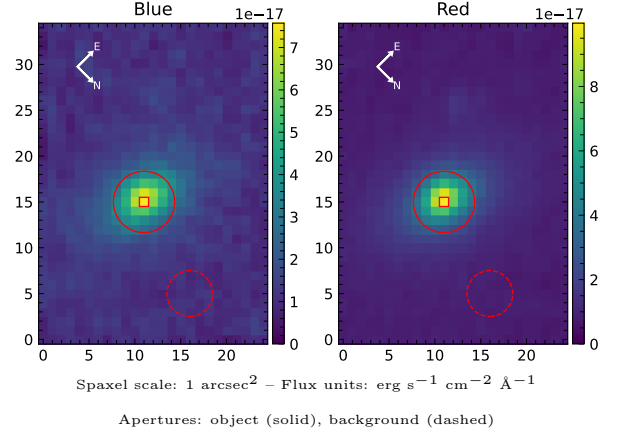


MCG-05-51-023

Spectrum ID	1275849_sp2	Spectrum type	Sy 1.2+
Alt name	g2154290-282145	Quality flag	good
z	0.0325	AGN reference	6dFGS
RA, Dec	328.6207, -28.3624	MW $E(B-V)$	0.027
MJD	60168.55	Power law α_ν	-1.99 ± 0.01
SNR/ \AA B/R	18.8/37.1	$\log L_{5100, \text{AGN}}$	42.48 ± 0.03
Obs airmass	1.05	$\log H\beta_{\text{Br}}/[\text{O III}]$	< 0.36
SMSS ID	1275849	$\log M_{L5100}/M_\odot$	—
Neighbour	4.2", 2002066249	$\log M_{\text{H}\alpha}/M_\odot$	7.77 ± 0.04
SMSS $\langle r_6''_{\text{ap}} \rangle$	15.36 ± 0.04	$\log M_{\text{H}\beta}/M_\odot$	—
2MASS K_{ext}	11.22 ± 0.04	$\log M_{[\text{O III}]} / M_\odot$	—



Emission Line Measurements

Line	$\log L$ (erg s $^{-1}$)	FWHM (km s $^{-1}$)	σ (km s $^{-1}$)	EW (Å)
H γ Narrow	—	—	—	—
Hγ Broad	—	—	—	—
[O III] 4364	—	—	—	—
He II Narrow	—	—	—	—
He II Broad	39.33 ± 0.29	1550 ± 62	658 ± 25	3.59 ± 1.62
H β Narrow	39.48 ± 0.10	370 ± 63	200 ± 48	5.02 ± 1.31
Hβ Broad	< 40.09	—	—	—
[O III] 5007	39.72 ± 0.06	370 ± 63	201 ± 48	8.83 ± 1.33
He I Narrow	—	—	—	—
He I Broad	39.41 ± 0.17	1178 ± 62	500 ± 25	4.34 ± 0.89
[O I] 6300	38.57 ± 0.44	366 ± 62	155 ± 25	0.63 ± 0.49
H α Narrow	40.33 ± 0.01	366 ± 62	155 ± 25	36.33 ± 0.55
Hα Broad	40.94 ± 0.02	9006 ± 111	3377 ± 25	148.98 ± 2.74
[N II] 6585	40.06 ± 0.02	366 ± 62	155 ± 25	19.62 ± 0.55
[S II] 6718	39.70 ± 0.04	366 ± 62	155 ± 25	8.56 ± 0.57
[S II] 6732	39.59 ± 0.06	366 ± 62	155 ± 25	6.61 ± 0.54

Emission Summary

H α broad SNR	2.13
H β broad SNR	0.00
H γ broad SNR	0.00
AGN frac	0.16
Host frac	0.84
$\log L_{5100, \text{Host}}$	43.18
Fe II/H β	—
Fe II/[O III]	—

Quality Flags

spurious_hab/hbb	0/0
15100	2
balmer	2
balmer_snr	2
hb_width	2
balmer_width	2