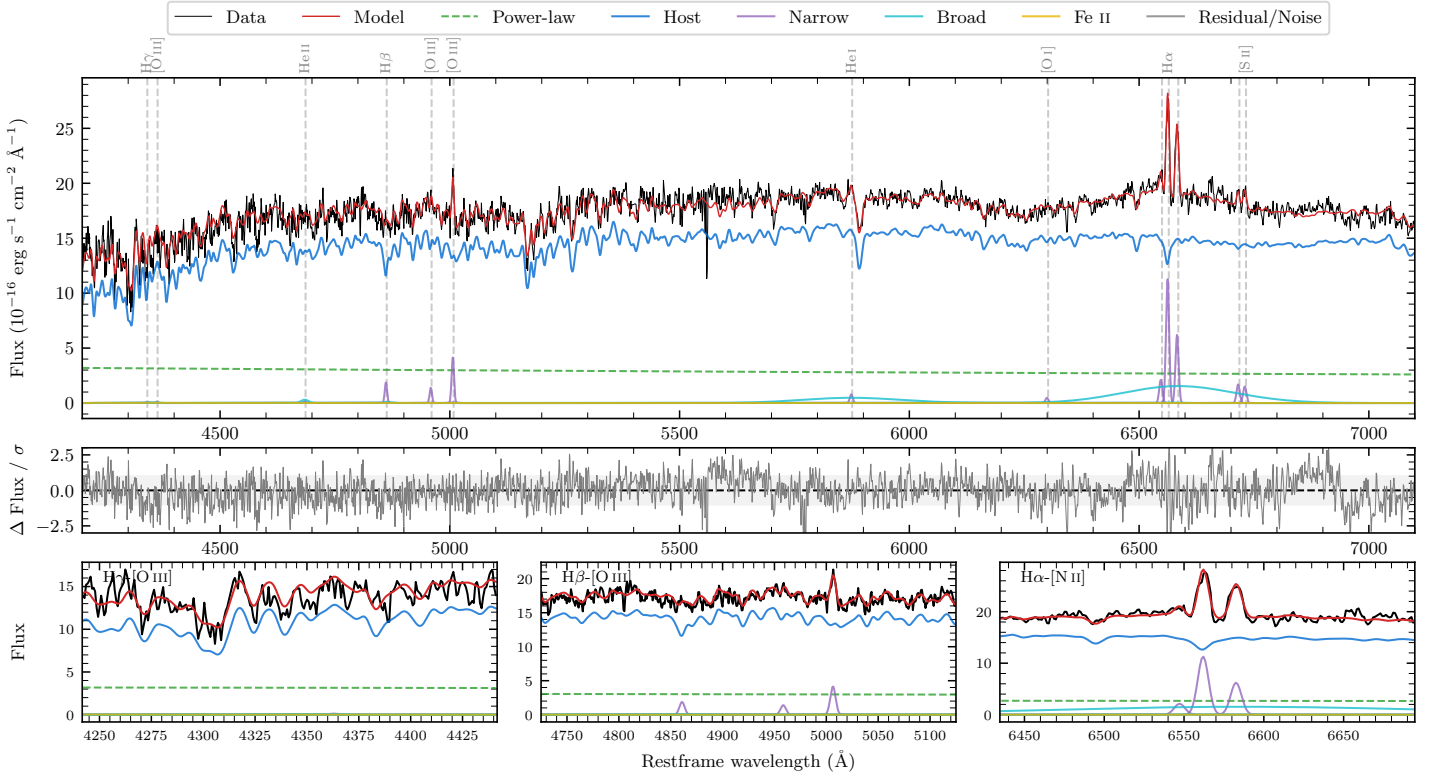
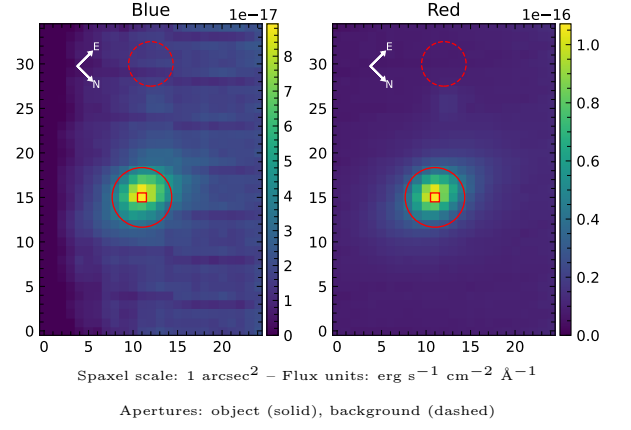


# MCG-05-51-023

Spectrum ID	1275849_sp1	Spectrum type	Sy 1.5+
Alt name	g2154290-282145	Quality flag	good
$z$	0.0325	AGN reference	6dFGS
RA, Dec	328.6207, -28.3624	MW $E(B-V)$	0.027
MJD	60168.55	Power law $\alpha_\nu$	$-1.61 \pm 0.09$
SNR/ $\text{\AA}$ B/R	20.3/33.3	$\log L_{5100, \text{AGN}}$	$42.57 \pm 0.03$
Obs airmass	1.05	$\log H\beta_{\text{Br}}/[\text{O III}]$	$< 0.30$
SMSS ID	1275849	$\log M_{L5100}/M_\odot$	—
Neighbour	4.2", 2002066249	$\log M_{\text{H}\alpha}/M_\odot$	$8.15 \pm 0.04$
SMSS $\langle r_6^{\text{ap}} \rangle$	$15.36 \pm 0.04$	$\log M_{\text{H}\beta}/M_\odot$	—
2MASS $K_{\text{ext}}$	$11.22 \pm 0.04$	$\log M_{[\text{O III}]} / M_\odot$	—



## Emission Line Measurements

Line	$\log L$ (erg s $^{-1}$ )	FWHM (km s $^{-1}$ )	$\sigma$ (km s $^{-1}$ )	EW ( $\text{\AA}$ )
H $\gamma$ Narrow	—	—	—	—
<b>H<math>\gamma</math> Broad</b>	—	—	—	—
[O III] 4364	—	—	—	—
He II Narrow	—	—	—	—
<b>He II Broad</b>	<b><math>39.19 \pm 0.36</math></b>	<b><math>1178 \pm 62</math></b>	<b><math>500 \pm 25</math></b>	<b><math>2.05 \pm 1.18</math></b>
H $\beta$ Narrow	$39.51 \pm 0.11$	$369 \pm 63$	$184 \pm 36$	$4.21 \pm 1.00$
<b>H<math>\beta</math> Broad</b>	$< 40.16$	—	—	—
[O III] 5007	$39.86 \pm 0.05$	$369 \pm 63$	$184 \pm 36$	$9.76 \pm 1.07$
He I Narrow	$39.18 \pm 0.17$	$365 \pm 62$	$154 \pm 25$	$2.22 \pm 0.55$
<b>He I Broad</b>	<b><math>40.51 \pm 0.07</math></b>	<b><math>12952 \pm 62</math></b>	<b><math>5500 \pm 25</math></b>	<b><math>47.56 \pm 3.90</math></b>
[O I] 6300	$38.99 \pm 0.24$	$365 \pm 62$	$154 \pm 25$	$1.47 \pm 0.56$
H $\alpha$ Narrow	$40.38 \pm 0.01$	$365 \pm 62$	$154 \pm 25$	$36.81 \pm 0.60$
<b>H<math>\alpha</math> Broad</b>	<b><math>41.08 \pm 0.02</math></b>	<b><math>12737 \pm 230</math></b>	<b><math>4779 \pm 25</math></b>	<b><math>180.80 \pm 3.48</math></b>
[N II] 6585	$40.13 \pm 0.02$	$365 \pm 62$	$154 \pm 25$	$20.33 \pm 0.59$
[S II] 6718	$39.57 \pm 0.07$	$365 \pm 62$	$154 \pm 25$	$5.71 \pm 0.62$
[S II] 6732	$39.52 \pm 0.09$	$365 \pm 62$	$154 \pm 25$	$5.10 \pm 0.59$

## Emission Summary

H $\alpha$ broad SNR	1.87
H $\beta$ broad SNR	0.00
H $\gamma$ broad SNR	0.00
AGN frac	0.18
Host frac	0.82
$\log L_{5100, \text{Host}}$	43.24
Fe II/H $\beta$	—
Fe II/[O III]	—

## Quality Flags

spurious_hab/hbb	0/0
15100	2
balmer	2
balmer_snr	2
hb_width	2
balmer_width	2