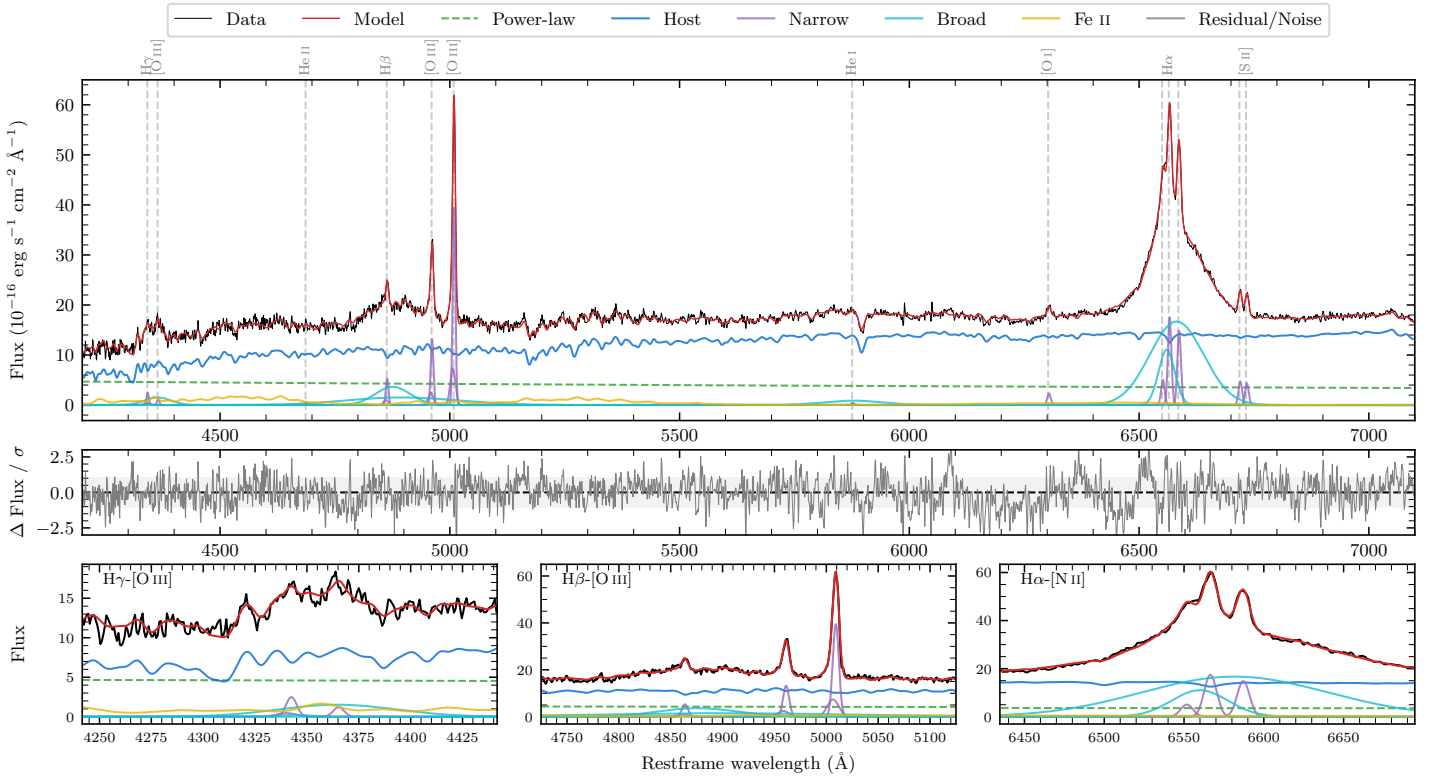
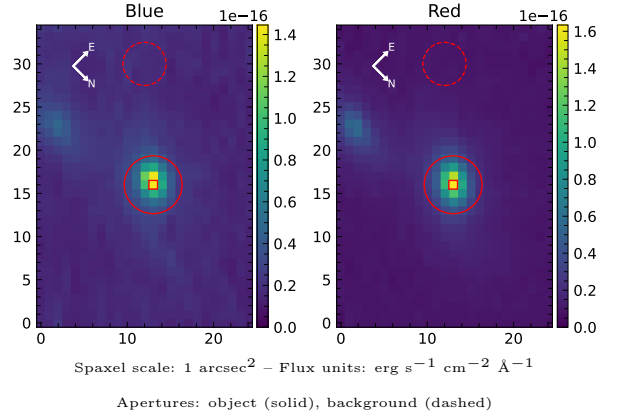


Mrk 1152

Spectrum ID	12601355_sp1	Spectrum type	Sy 1.5
Alt name	g0113501-145044	Quality flag	good
z	0.0528	AGN reference	6dFGS
RA, Dec	18.4586, -14.8457	MW $E(B - V)$	0.018
MJD	60203.68	Power law α_ν	-1.39 ± 0.25
SNR/ \AA B/R	20.8/43.0	$\log L_{5100, \text{AGN}}$	43.14 ± 0.03
Obs airmass	1.05	$\log H\beta_{\text{Br}}/[\text{O III}]$	-0.05 ± 0.20
SMSS ID	12601355	$\log M_{L5100}/M_\odot$	8.02 ± 0.03
Neighbour	4.8", 2023663967	$\log M_{H\alpha}/M_\odot$	7.94 ± 0.02
SMSS $\langle r_6''_{\text{ap}} \rangle$	15.34 ± 0.08	$\log M_{H\beta}/M_\odot$	8.04 ± 0.10
2MASS K_{ext}	11.36 ± 0.04	$\log M_{[\text{O III}]} / M_\odot$	8.21 ± 0.02



Emission Line Measurements

Line	$\log L$ (erg s^{-1})	FWHM (km s^{-1})	σ (km s^{-1})	EW (\AA)
H γ Narrow	40.17 ± 0.09	451 ± 63	236 ± 26	4.92 ± 0.67
Hγ Broad	40.90 ± 0.05	4587 ± 214	1550 ± 40	25.90 ± 1.66
[O III] 4364	39.73 ± 0.20	416 ± 63	176 ± 25	1.80 ± 0.49
He II Narrow	39.46 ± 0.30	416 ± 63	176 ± 25	1.01 ± 0.45
He II Broad	—	—	—	—
H β Narrow	40.55 ± 0.03	451 ± 63	236 ± 26	12.61 ± 0.66
Hβ Broad	$41.38^{+0.37}_{-0.02}$	5545 ± 84	2038 ± 36	86.13 ± 1.78
[O III] 5007	41.43 ± 0.01	451 ± 63	236 ± 26	98.15 ± 0.69
He I Narrow	39.42 ± 0.21	416 ± 63	176 ± 25	1.06 ± 0.33
He I Broad	41.00 ± 0.03	7756 ± 94	3294 ± 39	39.49 ± 2.27
[O I] 6300	40.18 ± 0.04	416 ± 63	176 ± 25	6.25 ± 0.35
H α Narrow	41.07 ± 0.01	416 ± 63	176 ± 25	49.71 ± 0.57
Hα Broad	42.31 ± 0.01	4197 ± 88	2030 ± 25	863.66 ± 1.68
[N II] 6585	41.00 ± 0.01	416 ± 63	176 ± 25	42.55 ± 0.53
[S II] 6718	40.51 ± 0.02	416 ± 63	176 ± 25	14.00 ± 0.40
[S II] 6732	40.47 ± 0.02	416 ± 63	176 ± 25	12.92 ± 0.41

Emission Summary

H α broad SNR	33.90
H β broad SNR	4.63
H γ broad SNR	2.08
AGN frac	0.28
Host frac	0.72
$\log L_{5100, \text{Host}}$	43.56
Fe II/H β	—
Fe II/[O III]	—

Quality Flags

spurious_hab/hbb	0/1
15100	1
balmer	0
balmer_snr	1
hb_width	0
balmer_width	0