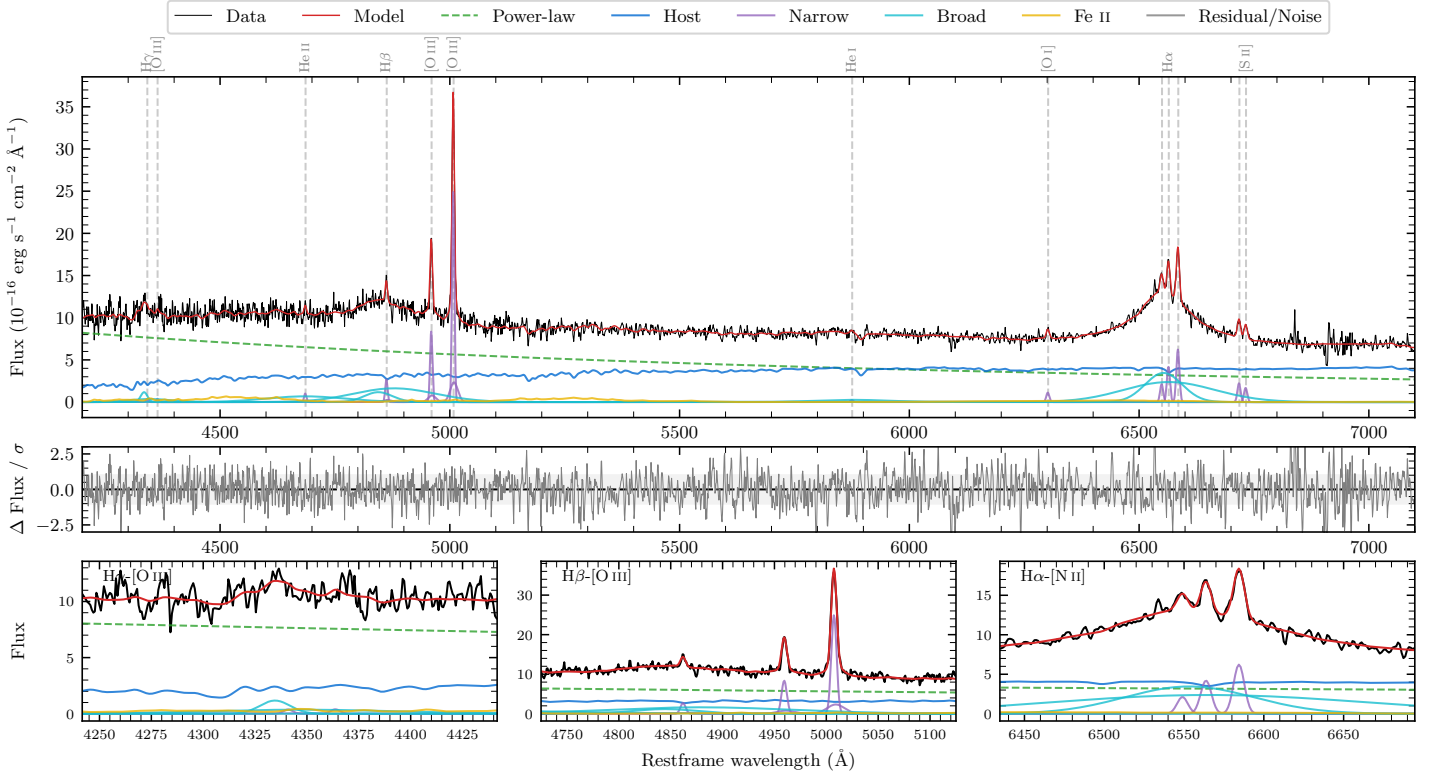
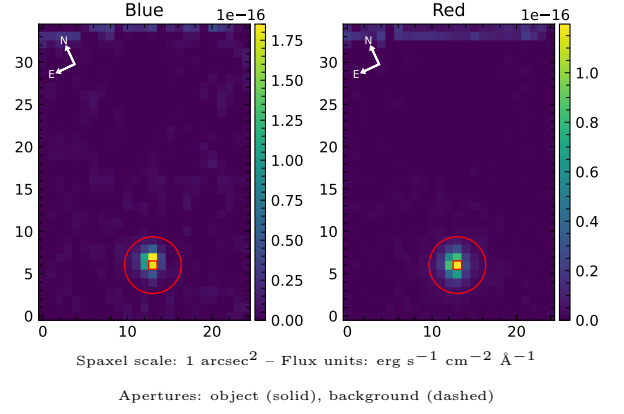


LEDA 845026

Spectrum ID	12341729_sp1	Spectrum type	Sy 1.5
Alt name	2354299727896266752	Quality flag	good
z	0.1008	AGN reference	AllBRICS2
RA, Dec	18.6082, -20.1972	MW $E(B - V)$	0.015
MJD	60931.63	Power law α_ν	0.13 ± 0.16
SNR/ \AA B/R	14.6/21.2	$\log L_{5100, \text{AGN}}$	43.85 ± 0.03
Obs airmass	1.03	$\log H\beta_{\text{Br}}/[\text{O III}]$	-0.37 ± 0.39
SMSS ID	12341729	$\log M_{L5100}/M_\odot$	8.13 ± 0.02
Neighbour	None $< 15''$	$\log M_{\text{H}\alpha}/M_\odot$	8.30 ± 0.03
SMSS $\langle r_6''_{\text{ap}} \rangle$	16.31 ± 0.08	$\log M_{\text{H}\beta}/M_\odot$	7.86 ± 0.19
2MASS K_{ext}	13.22 ± 0.12	$\log M_{[\text{O III}]} / M_\odot$	8.18 ± 0.02



Emission Line Measurements

Line	$\log L$ (erg s $^{-1}$)	FWHM (km s $^{-1}$)	σ (km s $^{-1}$)	EW (\AA)
H γ Narrow	—	—	—	—
Hγ Broad	41.25 ± 0.12	1447 ± 197	1854 ± 221	9.01 ± 1.25
[O III] 4364	39.80 ± 0.41	364 ± 63	154 ± 25	0.32 ± 0.27
He II Narrow	40.24 ± 0.19	364 ± 63	154 ± 25	1.03 ± 0.30
He II Broad	—	—	—	—
H β Narrow	40.79 ± 0.07	384 ± 63	277 ± 29	4.01 ± 0.57
Hβ Broad	$41.40^{+0.71}_{-0.08}$	4437 ± 109	1578 ± 43	16.29 ± 1.14
[O III] 5007	41.77 ± 0.01	384 ± 63	278 ± 29	40.85 ± 0.69
He I Narrow	39.73 ± 0.31	364 ± 63	154 ± 25	0.52 ± 0.27
He I Broad	41.18 ± 0.08	9796 ± 111	4160 ± 46	14.94 ± 1.35
[O I] 6300	40.41 ± 0.07	364 ± 63	154 ± 25	2.90 ± 0.31
H α Narrow	41.00 ± 0.03	364 ± 63	154 ± 25	12.30 ± 0.39
Hα Broad	42.42 ± 0.01	5844 ± 122	2932 ± 43	326.10 ± 2.31
[N II] 6585	41.17 ± 0.02	364 ± 63	154 ± 25	18.41 ± 0.47
[S II] 6718	40.73 ± 0.04	364 ± 63	154 ± 25	7.02 ± 0.40
[S II] 6732	40.62 ± 0.05	364 ± 63	154 ± 25	5.36 ± 0.40

Emission Summary

H α broad SNR	8.77
H β broad SNR	1.77
H γ broad SNR	2.31
AGN frac	0.63
Host frac	0.37
$\log L_{5100, \text{Host}}$	43.62
Fe II/H β	—
Fe II/[O III]	—

Quality Flags

spurious_hab/hbb	0/2
15100	0
balmer	1
balmer_snr	2
hb_width	0
balmer_width	2