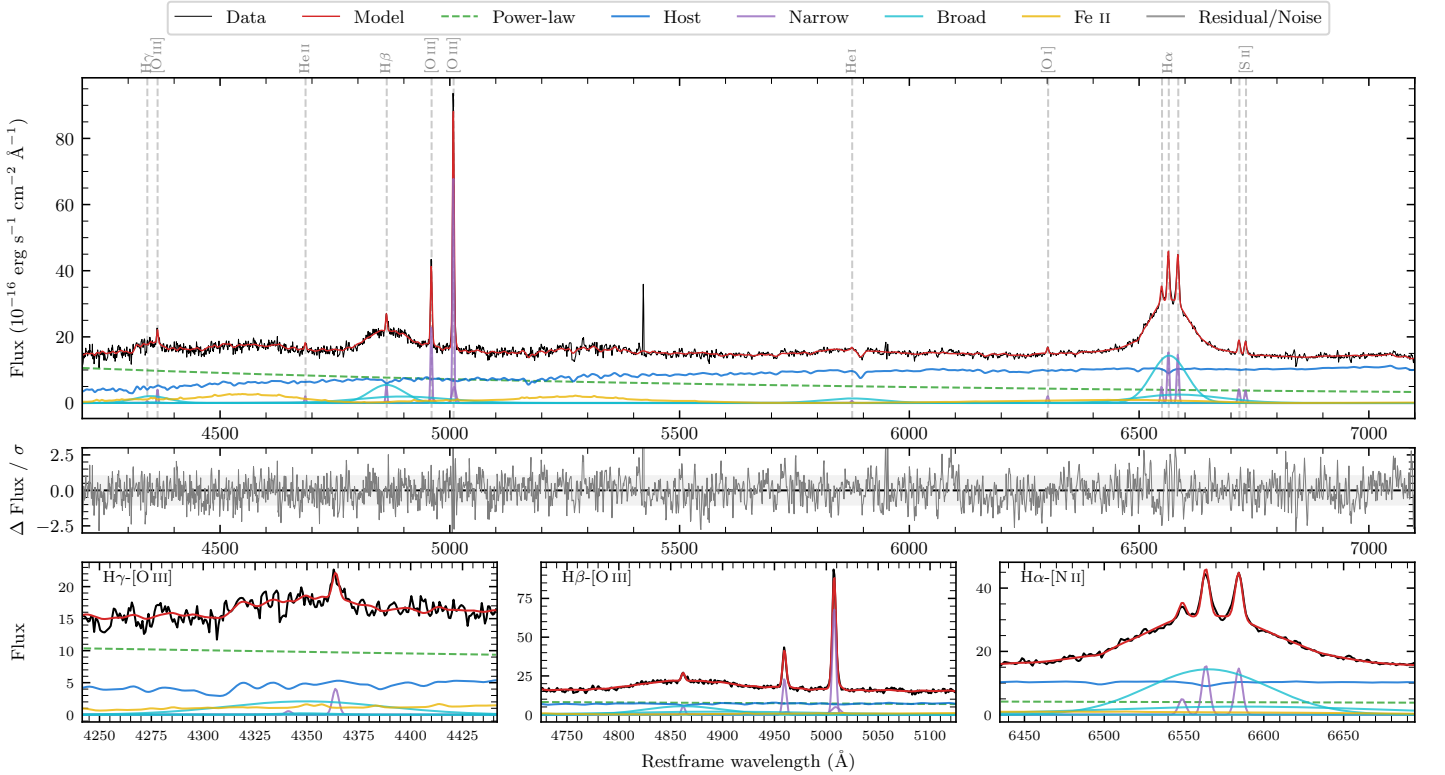
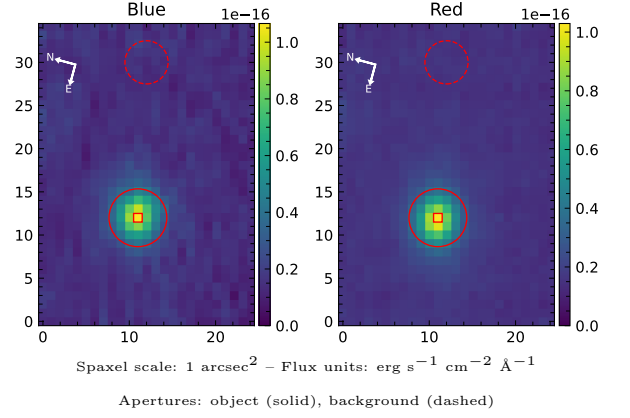


ESO 404–29

Spectrum ID	1230398_sp1	Spectrum type	Sy 1.2
Alt name	g2207450–323502	Quality flag	good
z	0.0591	AGN reference	6dFGS
RA, Dec	331.9376, –32.5837	MW $E(B - V)$	0.029
MJD	60089.79	Power law α_ν	0.20 ± 0.16
SNR/ \AA B/R	16.6/28.0	$\log L_{5100, \text{AGN}}$	43.47 ± 0.03
Obs airmass	1.03	$\log H\beta_{\text{Br}}/[\text{O III}]$	0.45 ± 0.02
SMSS ID	1230398	$\log M_{L5100}/M_\odot$	8.31 ± 0.03
Neighbour	5.7", 2001995644	$\log M_{\text{H}\alpha}/M_\odot$	7.96 ± 0.02
SMSS $\langle r_6''_{\text{ap}} \rangle$	15.40 ± 0.09	$\log M_{\text{H}\beta}/M_\odot$	8.45 ± 0.03
2MASS K_{ext}	12.07 ± 0.06	$\log M_{[\text{O III}]} / M_\odot$	8.39 ± 0.03



Emission Line Measurements

Line	$\log L$ (erg s $^{-1}$)	FWHM (km s $^{-1}$)	σ (km s $^{-1}$)	EW (Å)
H γ Narrow	–	–	–	–
Hγ Broad	41.27 ± 0.05	5735 ± 429	2246 ± 56	22.31 ± 1.17
[O III] 4364	40.14 ± 0.09	249 ± 63	105 ± 25	1.69 ± 0.22
He II Narrow	39.87 ± 0.15	249 ± 63	105 ± 25	1.07 ± 0.23
He II Broad	–	–	–	–
H β Narrow	40.39 ± 0.05	260 ± 63	142 ± 27	3.77 ± 0.41
Hβ Broad	41.95 ± 0.01	6576 ± 184	3328 ± 104	139.85 ± 2.24
[O III] 5007	41.50 ± 0.01	260 ± 63	142 ± 27	52.20 ± 0.44
He I Narrow	39.49 ± 0.22	249 ± 63	105 ± 25	0.72 ± 0.25
He I Broad	41.31 ± 0.03	7810 ± 156	3317 ± 66	47.38 ± 2.67
[O I] 6300	40.01 ± 0.08	249 ± 63	105 ± 25	2.80 ± 0.33
H α Narrow	40.90 ± 0.02	249 ± 63	105 ± 25	23.99 ± 0.46
Hα Broad	42.24 ± 0.01	4498 ± 72	1968 ± 38	525.22 ± 2.41
[N II] 6585	40.88 ± 0.02	249 ± 63	105 ± 25	22.66 ± 0.43
[S II] 6718	40.34 ± 0.03	249 ± 63	105 ± 25	6.95 ± 0.42
[S II] 6732	40.30 ± 0.04	249 ± 63	105 ± 25	6.31 ± 0.33

Emission Summary

H α broad SNR	17.25
H β broad SNR	7.53
H γ broad SNR	2.42
AGN frac	0.49
Host frac	0.51
$\log L_{5100, \text{Host}}$	43.49
Fe II/H β	0.65
Fe II/[O III]	1.84

Quality Flags

spurious_hab/hbb	0/0
15100	1
balmer	0
balmer_snr	1
hb_width	1
balmer_width	0