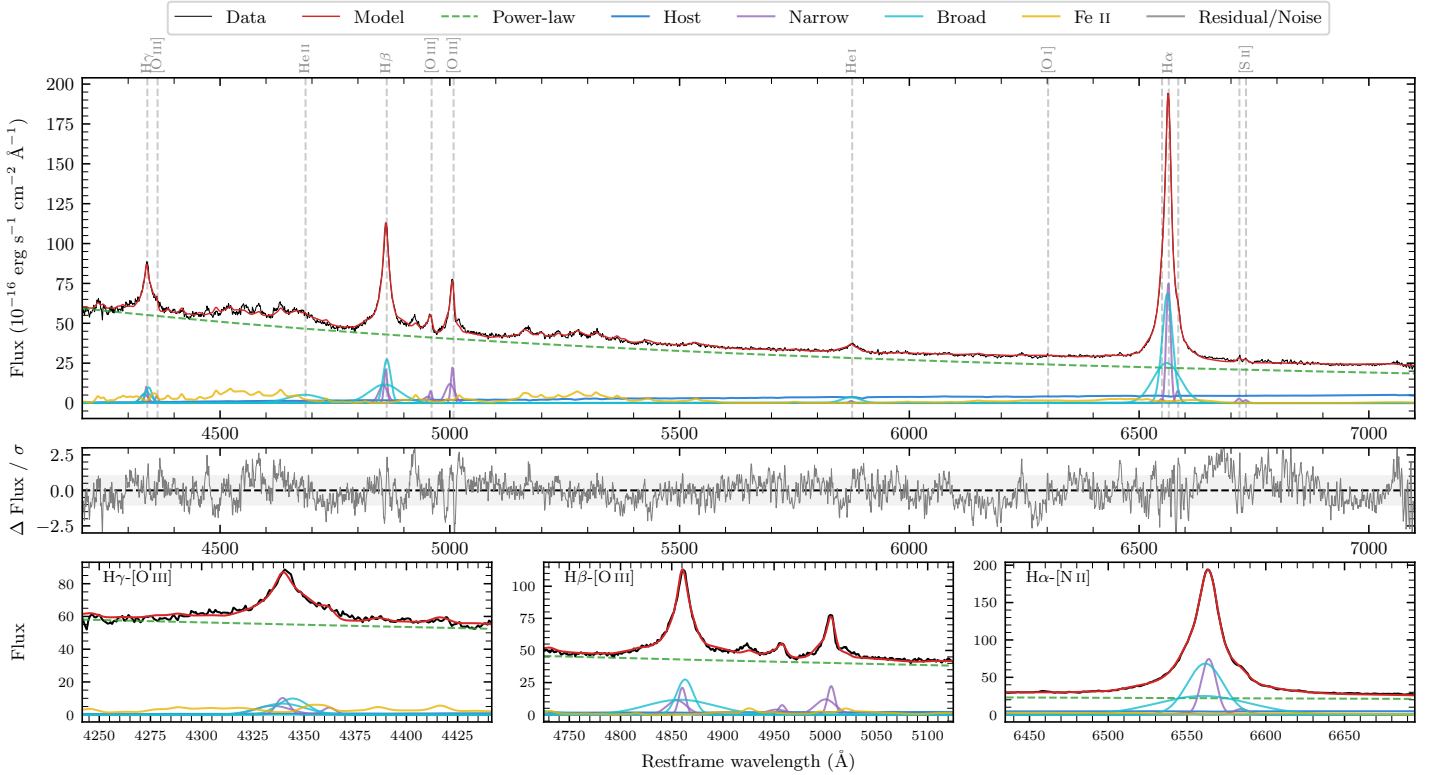
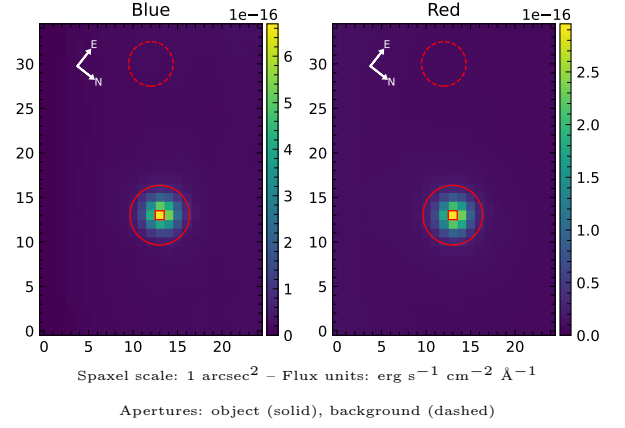


# Ton S 180

Spectrum ID	12274614_sp1	Spectrum type	Sy 1.2
Alt name	TON S180	Quality flag	good
$z$	0.0615	AGN reference	<a href="#">B+1994</a>
RA, Dec	14.3342, -22.3824	MW $E(B-V)$	0.012
MJD	59438.81	Power law $\alpha_\nu$	$0.22 \pm 0.03$
SNR/ $\text{\AA}$ B/R	30.9/38.4	$\log L_{5100, \text{AGN}}$	$44.26 \pm 0.01$
Obs airmass	1.11	$\log H\beta_{\text{Br}}/[\text{O III}]$	$0.49 \pm 0.02$
SMSS ID	<a href="#">12274614</a>	$\log M_{L5100}/M_\odot$	$7.40 \pm 0.03$
Neighbour	3.3", <a href="#">2021684939</a>	$\log M_{\text{H}\alpha}/M_\odot$	$7.20 \pm 0.05$
SMSS $\langle r_6''_{\text{ap}} \rangle$	$14.62 \pm 0.05$	$\log M_{\text{H}\beta}/M_\odot$	$7.29 \pm 0.03$
2MASS $K_{\text{ext}}$	nan $\pm$ nan	$\log M_{[\text{O III}]} / M_\odot$	$7.23 \pm 0.03$



## Emission Line Measurements

Line	$\log L$ ( $\text{erg s}^{-1}$ )	FWHM ( $\text{km s}^{-1}$ )	$\sigma$ ( $\text{km s}^{-1}$ )	EW ( $\text{\AA}$ )
H $\gamma$ Narrow	$41.29 \pm 0.08$	$680 \pm 65$	$509 \pm 26$	$3.83 \pm 0.17$
<b>H<math>\gamma</math> Broad</b>	<b><math>41.60 \pm 0.06</math></b>	<b><math>1469 \pm 102</math></b>	<b><math>567 \pm 79</math></b>	<b><math>7.10 \pm 0.19</math></b>
[O III] 4364	$40.53 \pm 0.15$	$513 \pm 63$	$217 \pm 25$	$0.67 \pm 0.10$
He II Narrow	$40.03 \pm 0.27$	$513 \pm 63$	$217 \pm 25$	$0.25 \pm 0.10$
<b>He II Broad</b>	<b><math>41.69 \pm 0.03</math></b>	<b><math>5651 \pm 210</math></b>	<b><math>2400 \pm 89</math></b>	<b><math>11.13 \pm 0.36</math></b>
H $\beta$ Narrow	$41.65 \pm 0.04$	$680 \pm 65$	$509 \pm 26$	$11.36 \pm 0.19$
<b>H<math>\beta</math> Broad</b>	<b><math>42.18 \pm 0.01</math></b>	<b><math>1553 \pm 49</math></b>	<b><math>1176 \pm 33</math></b>	<b><math>38.25 \pm 0.35</math></b>
[O III] 5007	$41.69 \pm 0.01$	$680 \pm 65$	$509 \pm 26$	$13.22 \pm 0.20$
He I Narrow	$40.14 \pm 0.15$	$513 \pm 63$	$217 \pm 25$	$0.53 \pm 0.09$
<b>He I Broad</b>	<b><math>41.26 \pm 0.02</math></b>	<b><math>2462 \pm 92</math></b>	<b><math>1046 \pm 38</math></b>	<b><math>7.06 \pm 0.20</math></b>
[O I] 6300	$39.38 \pm 0.39$	$513 \pm 63$	$217 \pm 25$	$0.11 \pm 0.09$
H $\alpha$ Narrow	$41.94 \pm 0.02$	$513 \pm 63$	$217 \pm 25$	$42.93 \pm 0.18$
<b>H<math>\alpha</math> Broad</b>	<b><math>42.58 \pm 0.01</math></b>	<b><math>1485 \pm 67</math></b>	<b><math>728 \pm 25</math></b>	<b><math>184.62 \pm 0.34</math></b>
[N II] 6585	$40.95 \pm 0.03$	$513 \pm 63$	$217 \pm 25$	$4.42 \pm 0.15$
[S II] 6718	$40.53 \pm 0.04$	$513 \pm 63$	$217 \pm 25$	$1.75 \pm 0.12$
[S II] 6732	$40.35 \pm 0.07$	$513 \pm 63$	$217 \pm 25$	$1.15 \pm 0.12$

## Emission Summary

H $\alpha$ broad SNR	62.47
H $\beta$ broad SNR	26.04
H $\gamma$ broad SNR	11.11
AGN frac	0.95
Host frac	0.05
$\log L_{5100, \text{Host}}$	42.99
Fe II/H $\beta$	1.07
Fe II/[O III]	3.30

## Quality Flags

spurious_hab/hbb	0/0
15100	0
balmer	0
balmer_snr	0
hb_width	2
balmer_width	0