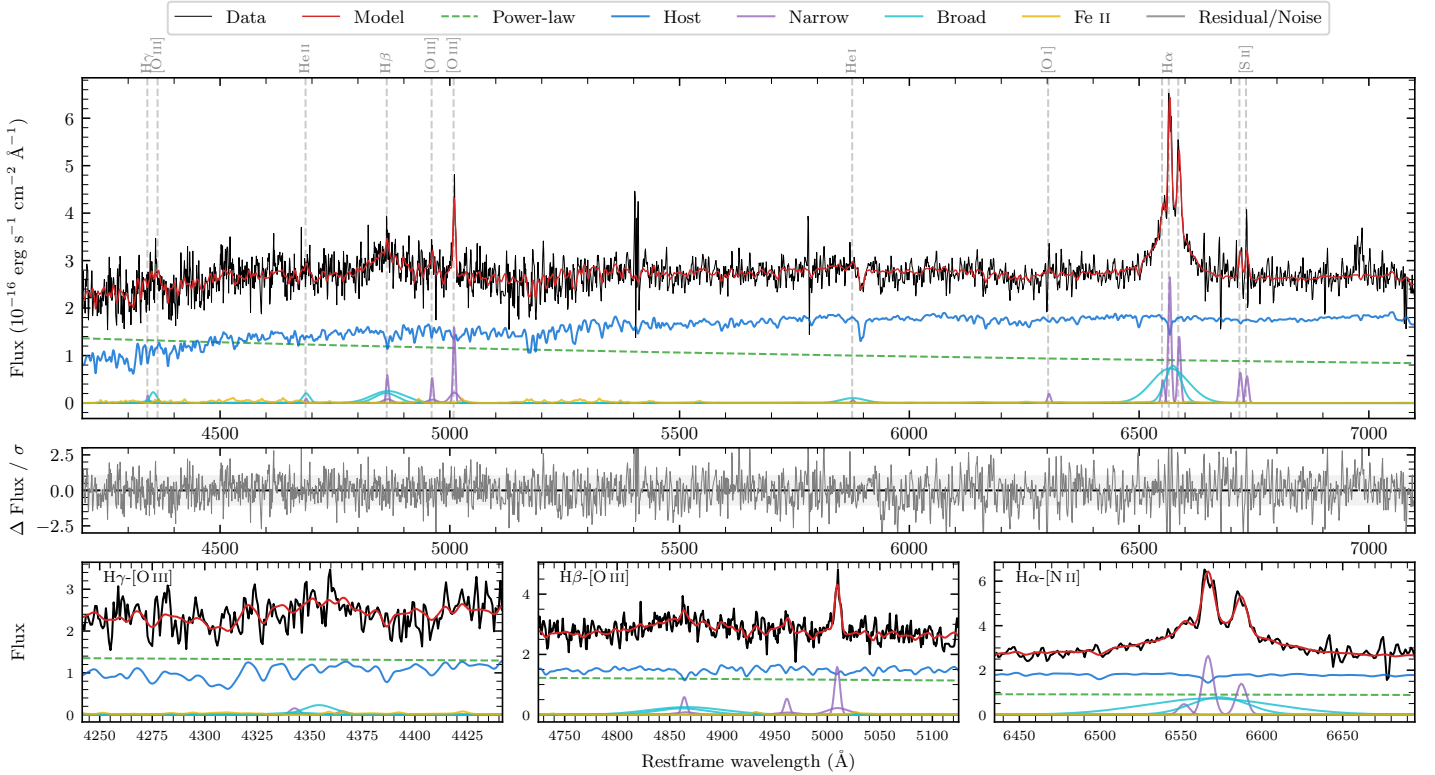
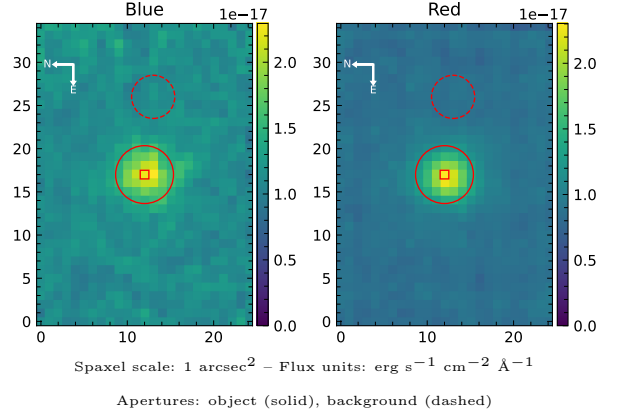


LEDA 932165

Spectrum ID	12151071_sp1	Spectrum type	Sy 1.2
Alt name	g0042098-135153	Quality flag	good
z	0.0904	AGN reference	6dFGS
RA, Dec	10.5409, -13.8647	MW $E(B-V)$	0.018
MJD	60224.6	Power law α_ν	-1.08 ± 0.30
SNR/ \AA B/R	10.0/15.8	$\log L_{5100, \text{AGN}}$	43.07 ± 0.05
Obs airmass	1.06	$\log H\beta_{\text{Br}}/[\text{O III}]$	0.36 ± 0.09
SMSS ID	12151071	$\log M_{L5100}/M_\odot$	7.78 ± 0.11
Neighbour	None $< 15''$	$\log M_{\text{H}\alpha}/M_\odot$	6.98 ± 0.05
SMSS $\langle r_6''_{\text{ap}} \rangle$	17.30 ± 0.06	$\log M_{\text{H}\beta}/M_\odot$	7.62 ± 0.12
2MASS K_{ext}	13.82 ± 0.21	$\log M_{[\text{O III}]} / M_\odot$	7.56 ± 0.12



Emission Line Measurements

Line	$\log L$ (erg s ⁻¹)	FWHM (km s ⁻¹)	σ (km s ⁻¹)	EW (Å)
H γ Narrow	39.47 ± 0.39	391 ± 66	377 ± 66	1.08 ± 1.06
Hγ Broad	40.12 ± 0.18	1309 ± 153	491 ± 59	4.44 ± 1.18
[O III] 4364	—	—	—	—
He II Narrow	—	—	—	—
He II Broad	39.95 ± 0.23	1183 ± 63	502 ± 25	3.57 ± 1.04
H β Narrow	40.09 ± 0.14	391 ± 66	378 ± 66	5.14 ± 1.21
Hβ Broad	40.90 ± 0.06	4359 ± 540	1681 ± 142	32.60 ± 2.34
[O III] 5007	40.54 ± 0.06	391 ± 66	378 ± 66	14.72 ± 1.26
He I Narrow	39.05 ± 0.45	358 ± 63	151 ± 25	0.56 ± 0.46
He I Broad	40.19 ± 0.16	3204 ± 63	1360 ± 25	7.61 ± 1.59
[O I] 6300	39.53 ± 0.26	358 ± 63	151 ± 25	1.80 ± 0.70
H α Narrow	40.69 ± 0.02	358 ± 63	151 ± 25	26.57 ± 0.59
Hα Broad	41.38 ± 0.02	2679 ± 139	1264 ± 36	130.15 ± 2.28
[N II] 6585	40.41 ± 0.04	358 ± 63	151 ± 25	14.09 ± 0.60
[S II] 6718	40.08 ± 0.06	358 ± 63	151 ± 25	6.73 ± 0.82
[S II] 6732	40.03 ± 0.09	358 ± 63	151 ± 25	5.98 ± 0.74

Emission Summary

H α broad SNR	5.59
H β broad SNR	1.75
H γ broad SNR	1.03
AGN frac	0.44
Host frac	0.56
$\log L_{5100, \text{Host}}$	43.18
Fe II/H β	0.36
Fe II/[O III]	0.81

Quality Flags

spurious_hab/hbb	0/0
15100	1
balmer	1
balmer_snr	2
hb_width	0
balmer_width	0