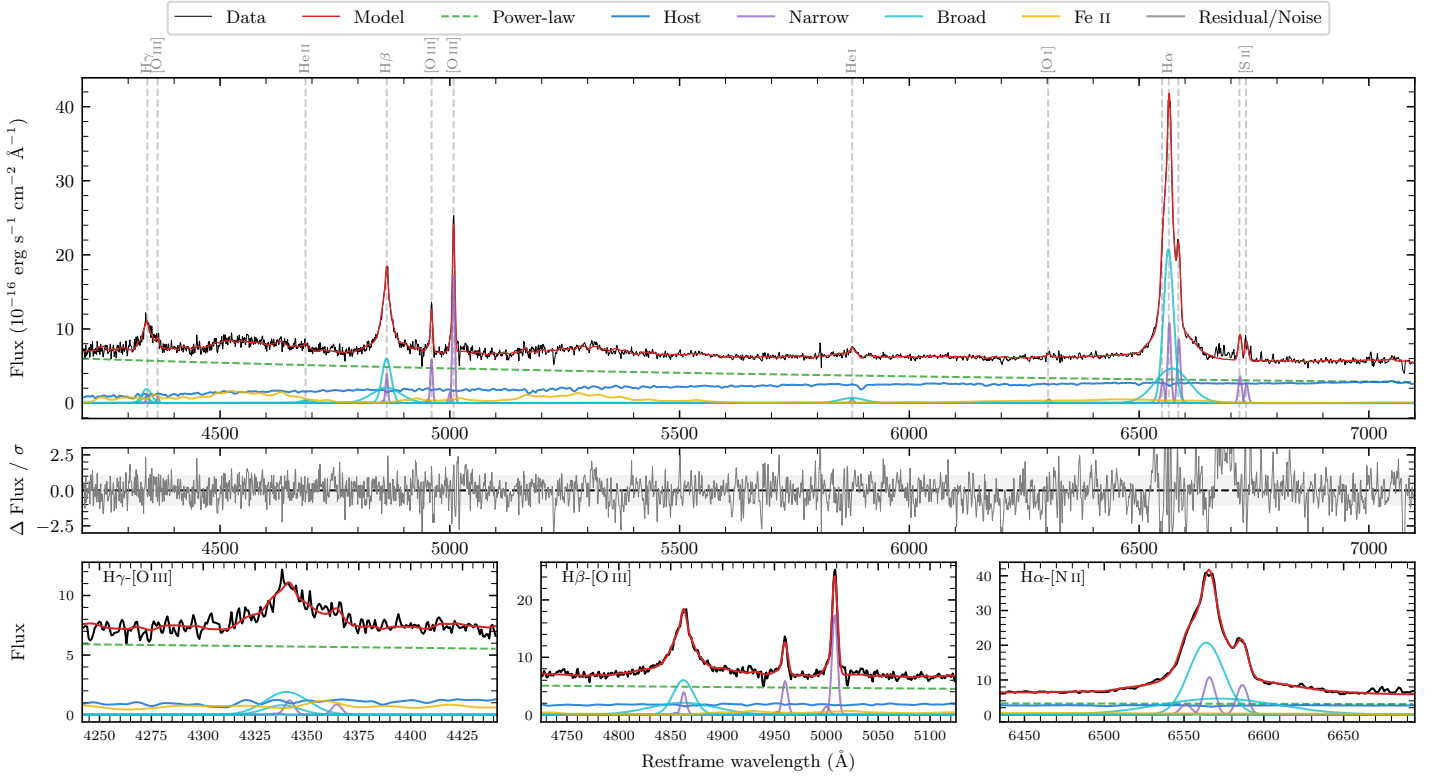
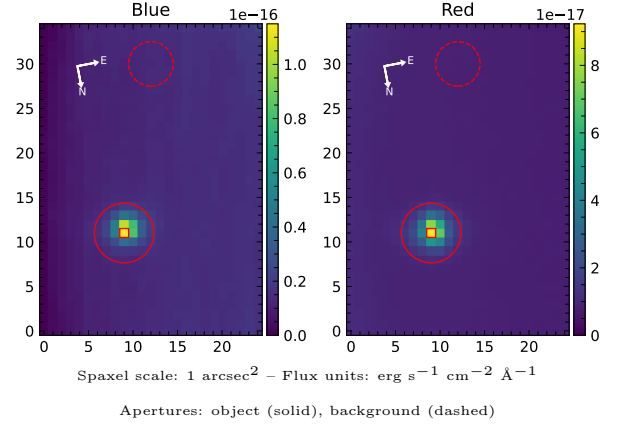


2MASS J21572316–3123064

Spectrum ID	1215002_sp1	Spectrum type	Sy 1.2
Alt name	g2157232–312307	Quality flag	good
z	0.0851	AGN reference	6dFGS
RA, Dec	329.3465, –31.3851	MW $E(B - V)$	0.021
MJD	59440.63	Power law α_ν	-0.57 ± 0.13
SNR/ \AA B/R	14.1/24.4	$\log L_{5100, \text{AGN}}$	43.62 ± 0.02
Obs airmass	1.01	$\log H\beta_{\text{Br}}/[\text{O III}]$	0.39 ± 0.02
SMSS ID	1215002	$\log M_{L5100}/M_\odot$	7.22 ± 0.04
Neighbour	None $< 15''$	$\log M_{\text{H}\alpha}/M_\odot$	6.94 ± 0.04
SMSS $\langle r_6''_{\text{ap}} \rangle$	16.78 ± 0.02	$\log M_{\text{H}\beta}/M_\odot$	7.22 ± 0.04
2MASS K_{ext}	nan \pm nan	$\log M_{[\text{O III}]} / M_\odot$	7.19 ± 0.04



Emission Line Measurements

Line	$\log L$ (erg s ⁻¹)	FWHM (km s ⁻¹)	σ (km s ⁻¹)	EW (Å)
H γ Narrow	40.17 ± 0.19	385 ± 63	205 ± 26	1.45 ± 0.32
Hγ Broad	41.12 ± 0.04	1602 ± 122	587 ± 42	12.66 ± 0.61
[O III] 4364	40.00 ± 0.19	378 ± 63	160 ± 25	0.98 ± 0.27
He II Narrow	39.77 ± 0.31	378 ± 63	160 ± 25	0.64 ± 0.27
He II Broad	40.31 ± 0.21	1696 ± 120	720 ± 50	2.19 ± 0.57
H β Narrow	40.73 ± 0.06	385 ± 63	205 ± 26	6.19 ± 0.34
Hβ Broad	41.79 ± 0.01	1741 ± 67	993 ± 40	69.80 ± 1.03
[O III] 5007	41.40 ± 0.01	385 ± 63	205 ± 26	29.54 ± 0.38
He I Narrow	39.99 ± 0.10	378 ± 63	160 ± 25	1.48 ± 0.20
He I Broad	40.96 ± 0.03	3294 ± 108	1399 ± 45	13.71 ± 0.60
[O I] 6300	39.94 ± 0.10	378 ± 63	160 ± 25	1.45 ± 0.22
H α Narrow	41.27 ± 0.01	378 ± 63	160 ± 25	32.76 ± 0.31
Hα Broad	42.29 ± 0.01	1346 ± 63	762 ± 25	343.57 ± 0.89
[N II] 6585	41.17 ± 0.01	378 ± 63	160 ± 25	26.10 ± 0.28
[S II] 6718	40.81 ± 0.02	378 ± 63	160 ± 25	11.59 ± 0.32
[S II] 6732	40.66 ± 0.02	378 ± 63	160 ± 25	8.41 ± 0.29

Emission Summary

H α broad SNR	51.70
H β broad SNR	16.54
H γ broad SNR	5.57
AGN frac	0.72
Host frac	0.28
$\log L_{5100, \text{Host}}$	43.21
Fe II/H β	1.14
Fe II/[O III]	2.82

Quality Flags

spurious_hab/hbb	0/0
15100	0
balmer	0
balmer_snr	0
hb_width	1
balmer_width	0