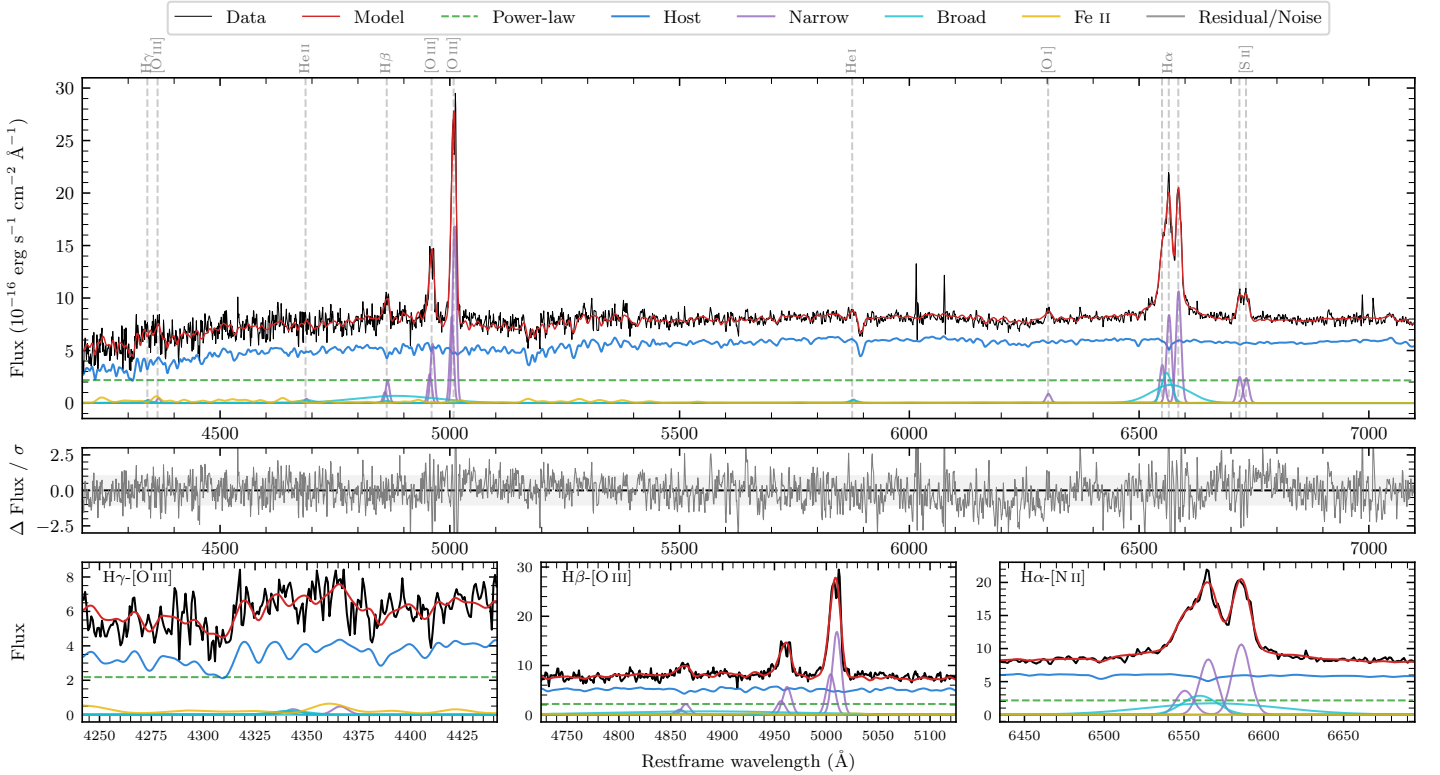
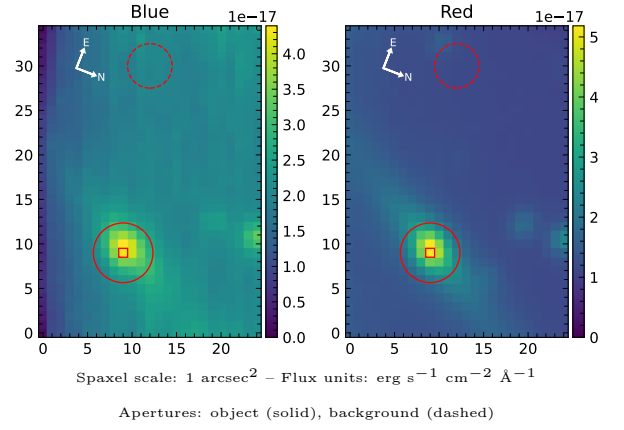


LEDA 92482

Spectrum ID	121072463_sp1	Spectrum type	Sy 1.8+
Alt name	g1608033-283448	Quality flag	good
z	0.0479	AGN reference	6dFGS
RA, Dec	242.0136, -28.5799	MW $E(B - V)$	0.163
MJD	59435.38	Power law α_ν	-1.98 ± 0.02
SNR/ \AA B/R	9.7/25.7	$\log L_{5100, \text{AGN}}$	42.77 ± 0.03
Obs airmass	1.00	$\log H\beta_{\text{Br}}/[\text{O III}]$	< -0.97
SMSS ID	121072463	$\log M_{L5100}/M_\odot$	—
Neighbour	10.7", 121072462	$\log M_{\text{H}\alpha}/M_\odot$	6.43 ± 0.06
SMSS $\langle r_6''_{\text{ap}} \rangle$	16.74 ± 0.03	$\log M_{\text{H}\beta}/M_\odot$	—
2MASS K_{ext}	11.83 ± 0.07	$\log M_{[\text{O III}]} / M_\odot$	—



Emission Line Measurements

Line	$\log L$ (erg s ⁻¹)	FWHM (km s ⁻¹)	σ (km s ⁻¹)	EW (Å)
H γ Narrow	39.39 ± 0.47	738 ± 63	304 ± 25	2.11 ± 1.43
Hγ Broad	—	—	—	—
[O III] 4364	39.39 ± 0.36	597 ± 62	253 ± 25	2.13 ± 1.35
He II Narrow	39.36 ± 0.39	597 ± 62	253 ± 25	2.00 ± 1.14
He II Broad	—	—	—	—
H β Narrow	40.26 ± 0.08	738 ± 63	304 ± 25	15.73 ± 1.22
Hβ Broad	< 40.20	—	—	—
[O III] 5007	41.17 ± 0.01	738 ± 63	304 ± 25	128.21 ± 1.24
He I Narrow	39.37 ± 0.30	597 ± 62	253 ± 25	2.02 ± 0.52
He I Broad	39.53 ± 0.30	1178 ± 62	500 ± 25	2.93 ± 0.74
[O I] 6300	39.81 ± 0.07	597 ± 62	253 ± 25	5.67 ± 0.53
H α Narrow	40.81 ± 0.02	597 ± 62	253 ± 25	56.49 ± 0.69
Hα Broad	41.16 ± 0.02	1665 ± 89	1233 ± 27	125.62 ± 1.55
[N II] 6585	40.92 ± 0.01	597 ± 62	253 ± 25	71.95 ± 0.67
[S II] 6718	40.30 ± 0.02	597 ± 62	253 ± 25	17.23 ± 0.55
[S II] 6732	40.28 ± 0.03	597 ± 62	253 ± 25	16.55 ± 0.55

Emission Summary

H α broad SNR	6.29
H β broad SNR	0.29
H γ broad SNR	0.00
AGN frac	0.31
Host frac	0.69
$\log L_{5100, \text{Host}}$	43.12
Fe II/H β	—
Fe II/[O III]	—

Quality Flags

spurious_hab/hbb	0/2
15100	1
balmer	2
balmer_snr	2
hb_width	2
balmer_width	2