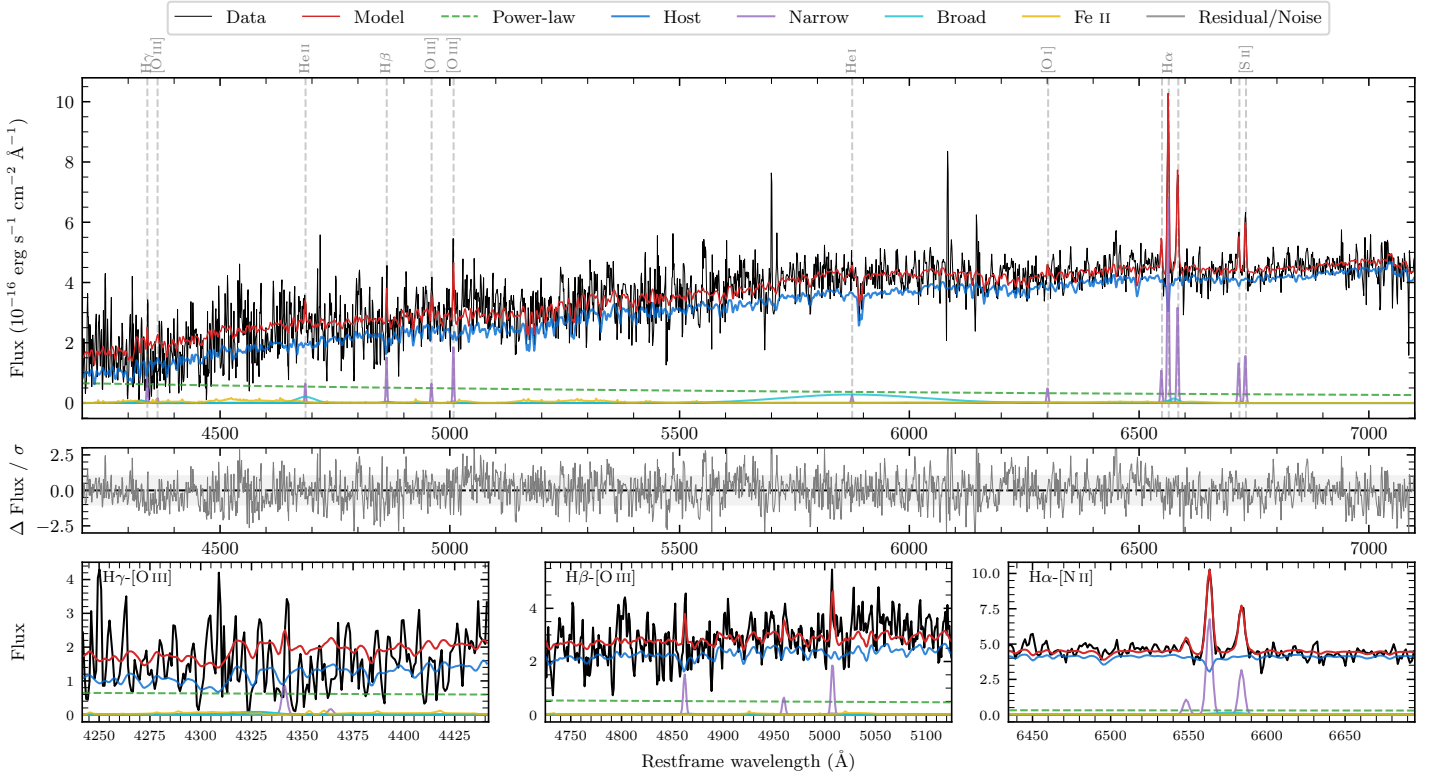
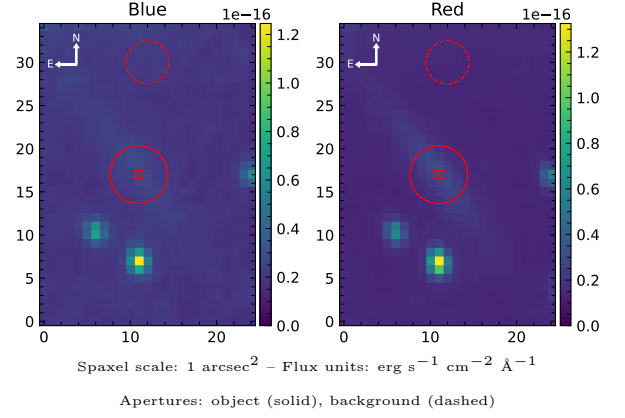


LEDA 690889

Spectrum ID	119894635_sp2	Spectrum type	Sy 2
Alt name	g1609040-322944	Quality flag	good
z	0.0361	AGN reference	6dFGS
RA, Dec	242.2665, -32.4954	MW $E(B - V)$	0.195
MJD	61124.65	Power law α_ν	-0.27 ± 0.32
SNR/ \AA B/R	4.0/10.6	$\log L_{5100, \text{AGN}}$	41.86 ± 0.11
Obs airmass	1.18	$\log H\beta_{\text{Br}}/[\text{O III}]$	—
SMSS ID	119894635	$\log M_{L5100}/M_\odot$	—
Neighbour	8.6", 119894637	$\log M_{\text{H}\alpha}/M_\odot$	—
SMSS $\langle r_6''_{\text{ap}} \rangle$	17.77 ± 0.00	$\log M_{\text{H}\beta}/M_\odot$	—
2MASS K_{ext}	12.74 ± 0.11	$\log M_{[\text{O III}]} / M_\odot$	—



Emission Line Measurements

Line	$\log L$ (erg s^{-1})	FWHM (km s^{-1})	σ (km s^{-1})	EW (\AA)
H γ Narrow	38.98 ± 0.33	214 ± 63	105 ± 31	4.83 ± 4.71
Hγ Broad	—	—	—	—
[O III] 4364	—	—	—	—
He II Narrow	38.84 ± 0.35	199 ± 62	84 ± 25	4.21 ± 2.23
He II Broad	39.52 ± 0.35	3050 ± 62	1295 ± 25	19.95 ± 9.86
H β Narrow	39.26 ± 0.15	214 ± 63	105 ± 31	11.36 ± 3.40
Hβ Broad	—	—	—	—
[O III] 5007	39.39 ± 0.11	214 ± 63	105 ± 31	15.81 ± 3.91
He I Narrow	38.53 ± 0.45	199 ± 62	84 ± 25	3.06 ± 2.34
He I Broad	40.52 ± 0.08	17660 ± 62	7500 ± 25	295.18 ± 26.69
[O I] 6300	38.85 ± 0.22	199 ± 62	84 ± 25	7.18 ± 2.59
H α Narrow	40.00 ± 0.02	199 ± 62	84 ± 25	107.96 ± 2.86
Hα Broad	—	—	—	—
[N II] 6585	39.66 ± 0.05	199 ± 62	84 ± 25	50.35 ± 2.89
[S II] 6718	39.31 ± 0.10	199 ± 62	84 ± 25	23.41 ± 3.07
[S II] 6732	39.39 ± 0.09	199 ± 62	84 ± 25	27.78 ± 3.18

Emission Summary

H α broad SNR	0.33
H β broad SNR	0.00
H γ broad SNR	0.00
AGN frac	0.17
Host frac	0.83
$\log L_{5100, \text{Host}}$	42.55
Fe II/H β	—
Fe II/[O III]	3.18

Quality Flags

spurious_hab/hbb	0/0
15100	2
balmer	2
balmer_snr	2
hb_width	2
balmer_width	2