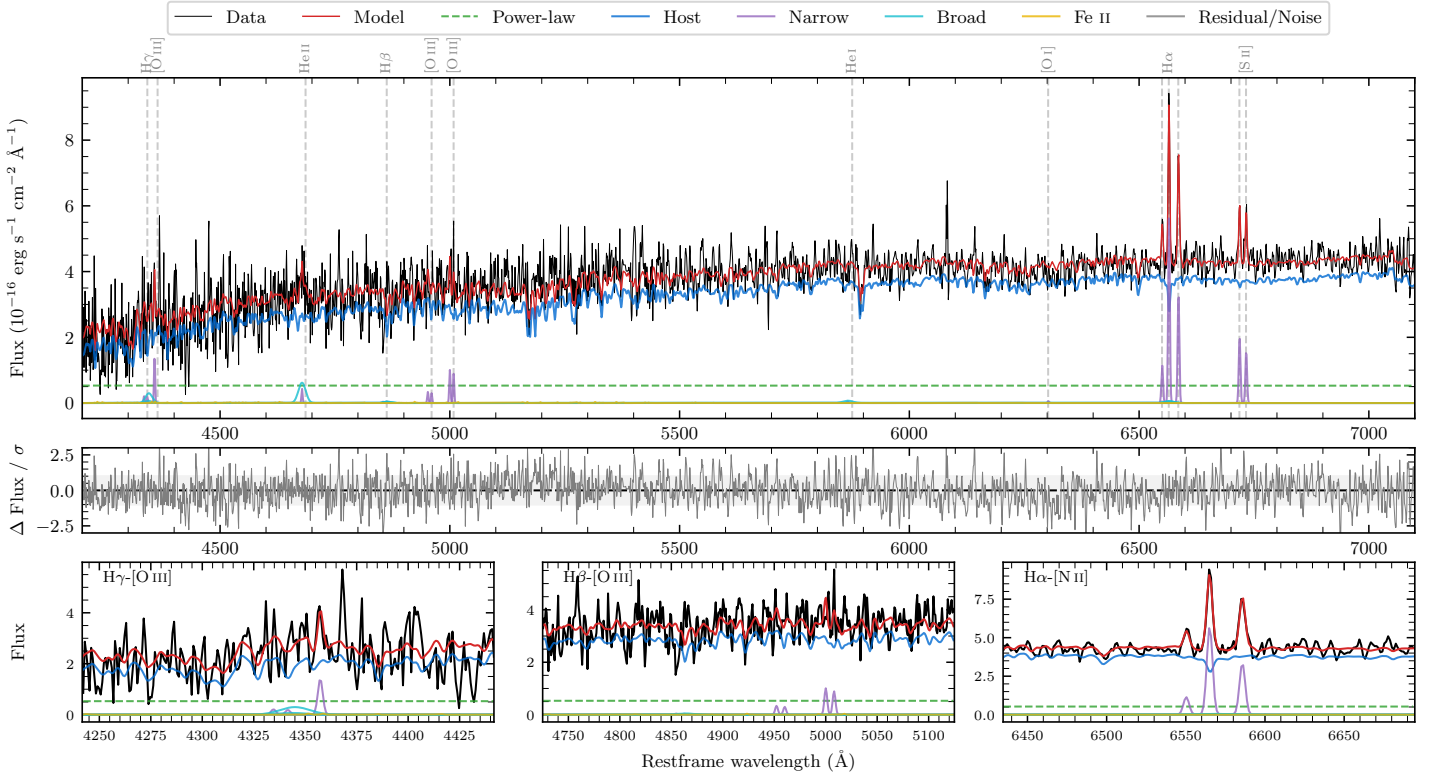
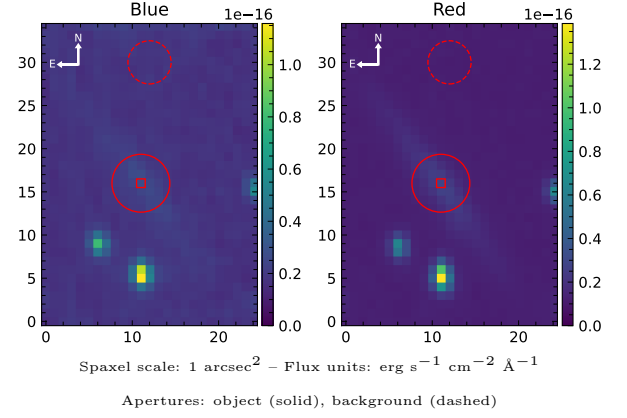


LEDA 690889

Spectrum ID	119894635_sp1	Spectrum type	SF
Alt name	g1609040-322944	Quality flag	good
z	0.0361	AGN reference	6dFGS
RA, Dec	242.2665, -32.4954	MW $E(B - V)$	0.195
MJD	60899.41	Power law α_ν	-1.99 ± 0.01
SNR/ \AA B/R	5.4/12.6	$\log L_{5100, \text{AGN}}$	41.91 ± 0.11
Obs airmass	1.03	$\log H\beta_{\text{Br}}/[\text{O III}]$	—
SMSS ID	119894635	$\log M_{L5100}/M_\odot$	—
Neighbour	8.6", 119894637	$\log M_{\text{H}\alpha}/M_\odot$	—
SMSS $\langle r_6 \rangle_{\text{ap}}$	17.77 ± 0.00	$\log M_{\text{H}\beta}/M_\odot$	—
2MASS K_{ext}	12.74 ± 0.11	$\log M_{[\text{O III}]} / M_\odot$	—



Emission Line Measurements

Line	$\log L$ (erg s $^{-1}$)	FWHM (km s $^{-1}$)	σ (km s $^{-1}$)	EW (A)
H γ Narrow	—	—	—	—
Hγ Broad	—	—	—	—
[O III] 4364	39.12 ± 0.11	204 ± 62	82 ± 25	8.26 ± 2.42
He II Narrow	—	—	—	—
He II Broad	39.59 ± 0.16	1199 ± 62	509 ± 25	24.14 ± 5.74
H β Narrow	—	—	—	—
Hβ Broad	—	—	—	—
[O III] 5007	39.31 ± 0.09	—	255 ± 25	12.81 ± 2.43
He I Narrow	—	—	—	—
He I Broad	38.79 ± 0.49	1316 ± 62	558 ± 25	3.84 ± 3.23
[O I] 6300	—	—	—	—
H α Narrow	39.91 ± 0.02	204 ± 62	82 ± 25	50.69 ± 1.34
Hα Broad	—	—	—	—
[N II] 6585	39.68 ± 0.03	204 ± 62	82 ± 25	29.80 ± 1.41
[S II] 6718	39.46 ± 0.05	204 ± 62	82 ± 25	18.15 ± 1.31
[S II] 6732	39.36 ± 0.06	204 ± 62	82 ± 25	14.40 ± 1.34

Emission Summary

H α broad SNR	0.25
H β broad SNR	0.00
H γ broad SNR	0.00
AGN frac	0.16
Host frac	0.84
$\log L_{5100, \text{Host}}$	42.62
Fe II/H β	—
Fe II/[O III]	—

Quality Flags

spurious_hab/hbb	0/0
15100	2
balmer	2
balmer_snr	2
hb_width	2
balmer_width	2