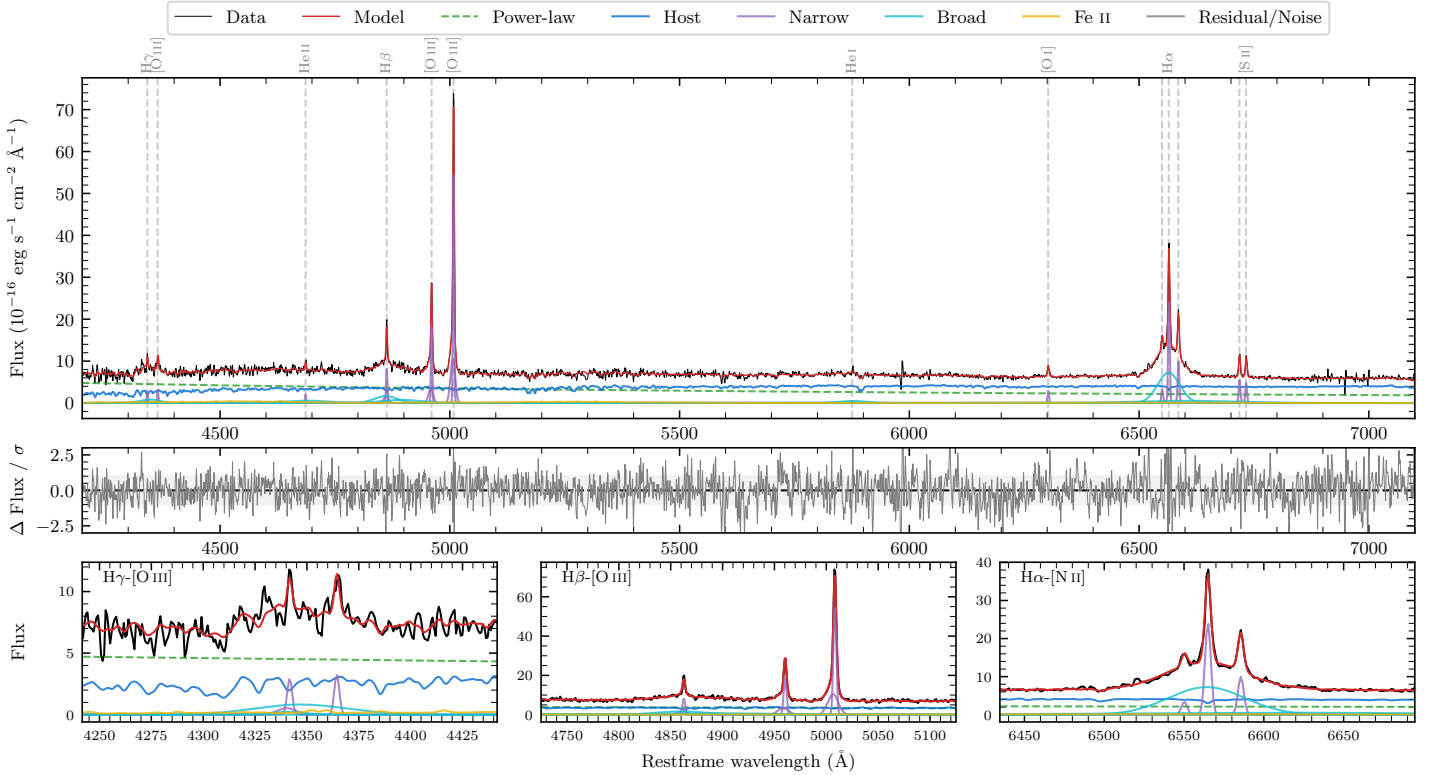
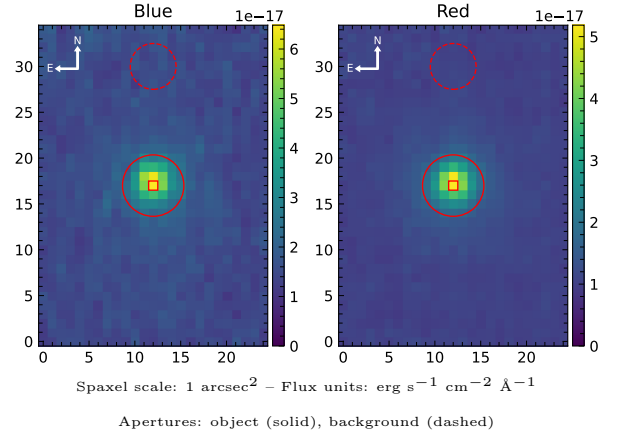


LEDA 3094039

Spectrum ID	11934338_sp1	Spectrum type	Sy 1.5
Alt name	g0023554-180251	Quality flag	good
z	0.0533	AGN reference	6dFGS
RA, Dec	5.9807, -18.0474	MW $E(B - V)$	0.020
MJD	60259.46	Power law α_ν	-0.18 ± 0.19
SNR/ \AA B/R	12.0/20.9	$\log L_{5100, \text{AGN}}$	43.06 ± 0.04
Obs airmass	1.03	$\log H\beta_{\text{Br}}/[\text{O III}]$	-0.25 ± 0.03
SMSS ID	11934338	$\log M_{L5100}/M_\odot$	7.78 ± 0.06
Neighbour	None $< 15''$	$\log M_{\text{H}\alpha}/M_\odot$	7.13 ± 0.03
SMSS $\langle r_6'' \text{ap} \rangle$	16.81 ± 0.06	$\log M_{\text{H}\beta}/M_\odot$	7.72 ± 0.07
2MASS K_{ext}	13.38 ± 0.17	$\log M_{[\text{O III}]} / M_\odot$	7.97 ± 0.05



Emission Line Measurements

Line	$\log L$ (erg s^{-1})	FWHM (km s^{-1})	σ (km s^{-1})	EW (\AA)
H γ Narrow	40.02 ± 0.09	228 ± 62	208 ± 26	3.44 ± 0.56
Hγ Broad	40.58 ± 0.09	3087 ± 558	1239 ± 121	11.90 ± 1.33
[O III] 4364	39.85 ± 0.09	196 ± 62	83 ± 25	2.33 ± 0.30
He II Narrow	39.67 ± 0.11	196 ± 62	83 ± 25	1.75 ± 0.30
He II Broad	40.72 ± 0.07	7523 ± 405	3195 ± 172	19.39 ± 1.78
H β Narrow	40.52 ± 0.02	228 ± 62	208 ± 26	13.49 ± 0.56
Hβ Broad	41.12 ± 0.03	4374 ± 264	1814 ± 95	52.70 ± 1.69
[O III] 5007	41.37 ± 0.01	228 ± 62	208 ± 26	99.71 ± 0.74
He I Narrow	39.05 ± 0.22	196 ± 62	83 ± 25	0.64 ± 0.23
He I Broad	40.44 ± 0.06	3846 ± 251	1633 ± 106	15.99 ± 1.20
[O I] 6300	39.94 ± 0.03	196 ± 62	83 ± 25	5.64 ± 0.26
H α Narrow	40.89 ± 0.01	196 ± 62	83 ± 25	54.49 ± 0.42
Hα Broad	41.62 ± 0.01	2700 ± 70	1379 ± 63	288.40 ± 2.64
[N II] 6585	40.51 ± 0.01	196 ± 62	83 ± 25	22.76 ± 0.37
[S II] 6718	40.27 ± 0.02	196 ± 62	83 ± 25	13.58 ± 0.33
[S II] 6732	40.20 ± 0.02	196 ± 62	83 ± 25	11.66 ± 0.32

Emission Summary

H α broad SNR	12.65
H β broad SNR	3.65
H γ broad SNR	1.80
AGN frac	0.51
Host frac	0.49
$\log L_{5100, \text{Host}}$	43.04
Fe II/H β	0.53
Fe II/[O III]	0.29

Quality Flags

spurious_hab/hbb	0/0
15100	0
balmer	0
balmer_snr	1
hb_width	0
balmer_width	0