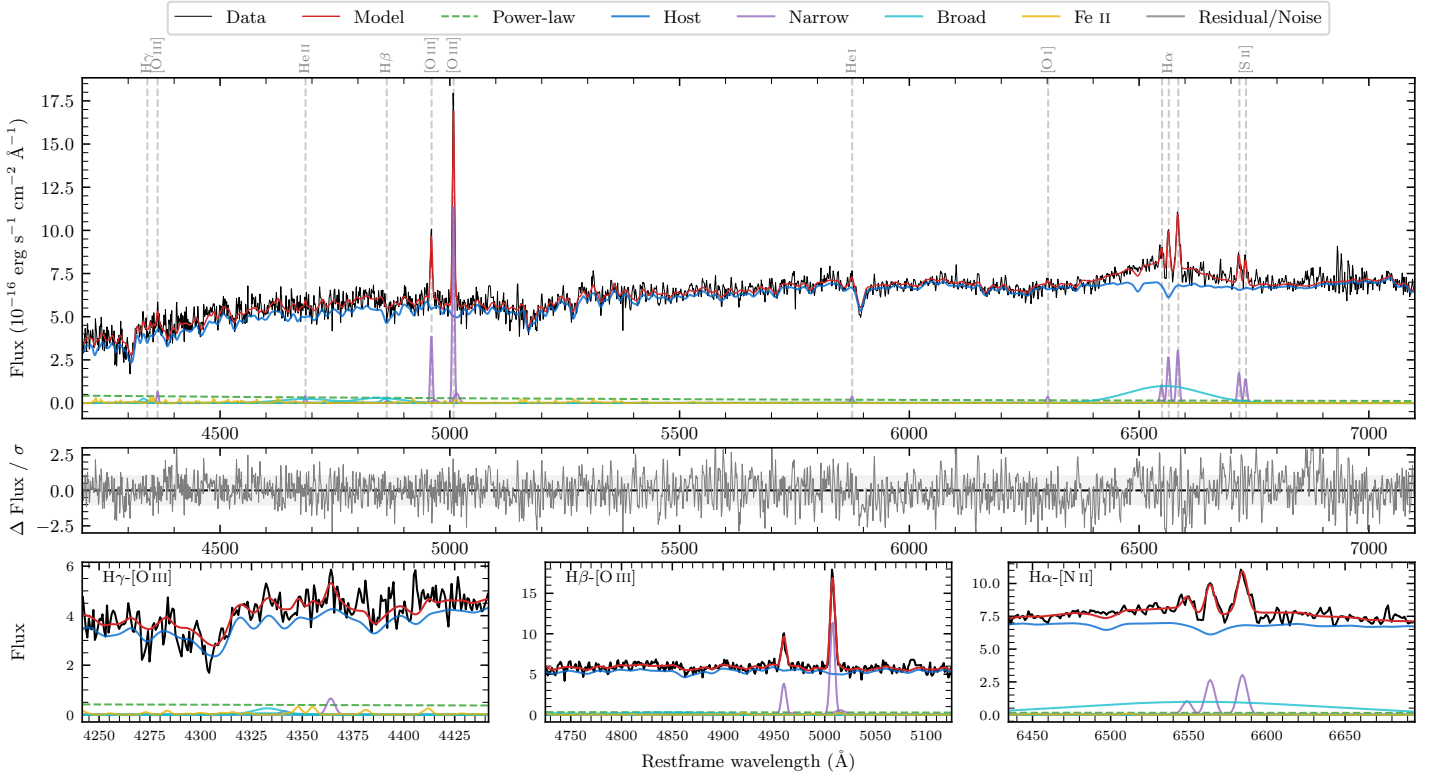
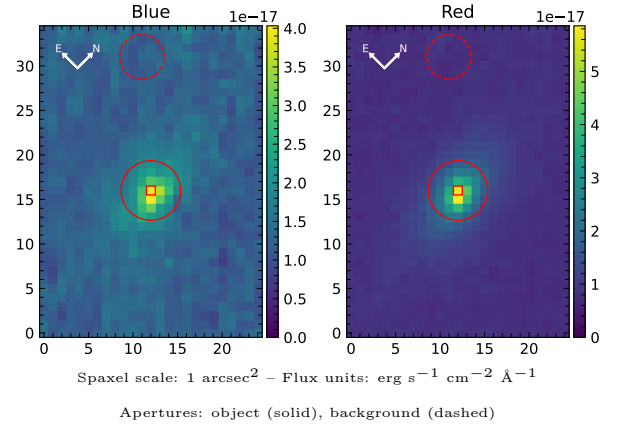


LEDA 1348

Spectrum ID	11907717_sp1	Spectrum type	Sy 1.5
Alt name	PKS 0018-19	Quality flag	good
z	0.0959	AGN reference	K+2008
RA, Dec	5.2814, -19.1682	MW $E(B-V)$	0.019
MJD	60932.6	Power law α_ν	0.45 ± 0.07
SNR/ \AA B/R	12.1/25.6	$\log L_{5100, \text{AGN}}$	42.49 ± 0.26
Obs airmass	1.03	$\log H\beta_{\text{Br}}/[\text{O III}]$	-0.24 ± 0.10
SMSS ID	11907717	$\log M_{L5100}/M_\odot$	7.35 ± 0.62
Neighbour	5.5", 2021059123	$\log M_{\text{H}\alpha}/M_\odot$	8.19 ± 0.03
SMSS $\langle r_{6''}^{\text{ap}} \rangle$	16.73 ± 0.04	$\log M_{\text{H}\beta}/M_\odot$	7.49 ± 0.60
2MASS K_{ext}	12.04 ± 0.07	$\log M_{[\text{O III}]} / M_\odot$	7.74 ± 0.60



Emission Line Measurements

Line	$\log L$ (erg s $^{-1}$)	FWHM (km s $^{-1}$)	σ (km s $^{-1}$)	EW (Angstroms)
H γ Narrow	—	—	—	—
Hγ Broad	—	—	—	—
[O III] 4364	39.93 ± 0.23	328 ± 63	139 ± 25	9.47 ± 3.14
He II Narrow	39.74 ± 0.31	328 ± 63	139 ± 25	7.34 ± 3.39
He II Broad	40.95 ± 0.13	8878 ± 63	3770 ± 25	118.79 ± 18.84
H β Narrow	—	—	—	—
Hβ Broad	41.03 ± 0.10	3540 ± 1874	2338 ± 100	152.08 ± 18.41
[O III] 5007	41.27 ± 0.02	335 ± 63	210 ± 33	293.35 ± 7.03
He I Narrow	39.81 ± 0.23	328 ± 63	139 ± 25	14.98 ± 3.84
He I Broad	39.55 ± 0.50	1196 ± 63	508 ± 25	8.01 ± 7.07
[O I] 6300	39.84 ± 0.19	328 ± 63	139 ± 25	18.78 ± 4.79
H α Narrow	40.71 ± 0.03	328 ± 63	139 ± 25	154.96 ± 5.61
Hα Broad	41.71 ± 0.02	8487 ± 193	3215 ± 25	1536.59 ± 32.46
[N II] 6585	40.77 ± 0.02	328 ± 63	139 ± 25	179.29 ± 5.72
[S II] 6718	40.54 ± 0.04	328 ± 63	139 ± 25	109.90 ± 6.35
[S II] 6732	40.44 ± 0.05	328 ± 63	139 ± 25	88.71 ± 6.39

Emission Summary

H α broad SNR	2.27
H β broad SNR	1.19
H γ broad SNR	0.81
AGN frac	0.05
Host frac	0.95
$\log L_{5100, \text{Host}}$	43.80
Fe II/H β	0.46
Fe II/[O III]	0.26

Quality Flags

spurious_hab/hbb	0/0
15100	2
balmer	1
balmer_snr	2
hb_width	1
balmer_width	2