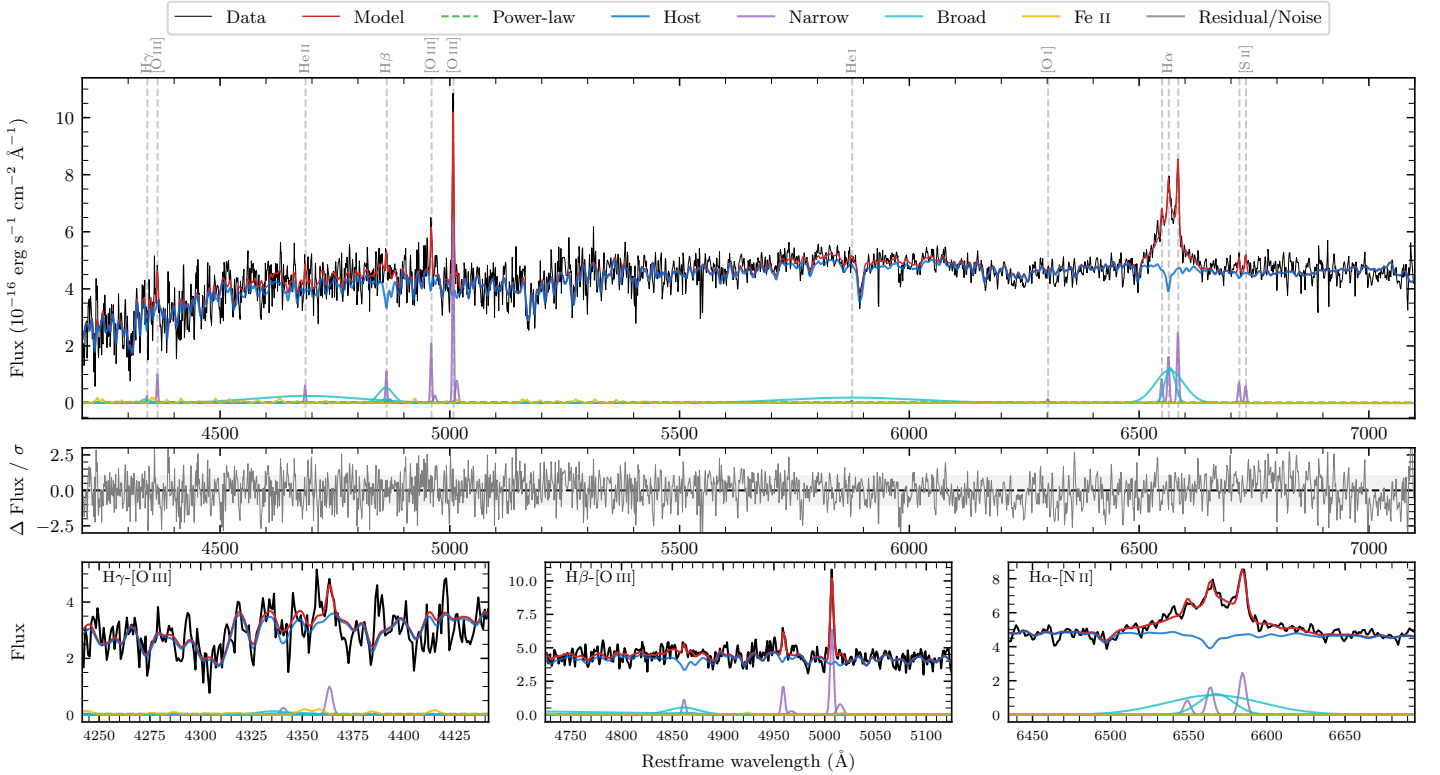
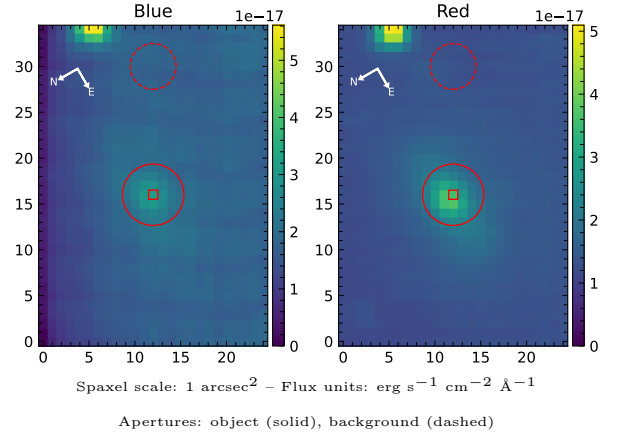


LEDA 810154

Spectrum ID	118424110_sp1	Spectrum type	Sy 1.5
Alt name	g1506308-224200	Quality flag	good
z	0.0619	AGN reference	6dFGS
RA, Dec	226.6283, -22.7002	MW $E(B-V)$	0.113
MJD	60377.75	Power law α_ν	-1.04 ± 0.55
SNR/ \AA B/R	9.9/16.9	$\log L_{5100, \text{AGN}}$	41.15 ± 0.62
Obs airmass	1.01	$\log H\beta_{\text{Br}}/[\text{O III}]$	-0.10 ± 0.09
SMSS ID	118424110	$\log M_{L5100}/M_\odot$	6.28 ± 0.29
Neighbour	None $< 15''$	$\log M_{H\alpha}/M_\odot$	6.45 ± 0.07
SMSS $\langle r_6''_{\text{ap}} \rangle$	17.17 ± 0.04	$\log M_{H\beta}/M_\odot$	6.72 ± 0.13
2MASS K_{ext}	12.31 ± 0.15	$\log M_{[\text{O III}]} / M_\odot$	6.88 ± 0.12



Emission Line Measurements

Line	$\log L$ (erg s ⁻¹)	FWHM (km s ⁻¹)	σ (km s ⁻¹)	EW (Å)
H γ Narrow	–	–	–	–
Hγ Broad	–	–	–	–
[O III] 4364	39.56 ± 0.17	237 ± 63	100 ± 25	113.19 ± 25.89
He II Narrow	39.38 ± 0.23	237 ± 63	100 ± 25	80.18 ± 25.90
He II Broad	40.86 ± 0.09	17661 ± 62	7500 ± 25	2446.21 ± 246.74
H β Narrow	39.74 ± 0.16	240 ± 63	220 ± 30	193.61 ± 38.39
Hβ Broad	40.40 ± 0.09	2010 ± 249	798 ± 44	850.90 ± 86.57
[O III] 5007	40.51 ± 0.03	240 ± 63	220 ± 30	1150.74 ± 38.74
He I Narrow	–	–	–	–
He I Broad	40.83 ± 0.08	16996 ± 63	7217 ± 25	2800.29 ± 245.54
[O I] 6300	38.88 ± 0.38	237 ± 63	100 ± 25	34.19 ± 23.45
H α Narrow	39.95 ± 0.08	237 ± 63	100 ± 25	412.79 ± 35.85
Hα Broad	41.08 ± 0.02	1792 ± 129	947 ± 29	5641.12 ± 116.59
[N II] 6585	40.13 ± 0.04	237 ± 63	100 ± 25	625.60 ± 29.67
[S II] 6718	39.60 ± 0.11	237 ± 63	100 ± 25	190.53 ± 27.31
[S II] 6732	39.52 ± 0.13	237 ± 63	100 ± 25	157.98 ± 27.50

Emission Summary

H α broad SNR	5.58
H β broad SNR	1.74
H γ broad SNR	0.54
AGN frac	0.01
Host frac	0.99
$\log L_{5100, \text{Host}}$	43.27
Fe II/H β	0.59
Fe II/[O III]	0.45

Quality Flags

spurious_hab/hbb	0/0
15100	2
balmer	1
balmer_snr	2
hb_width	0
balmer_width	0