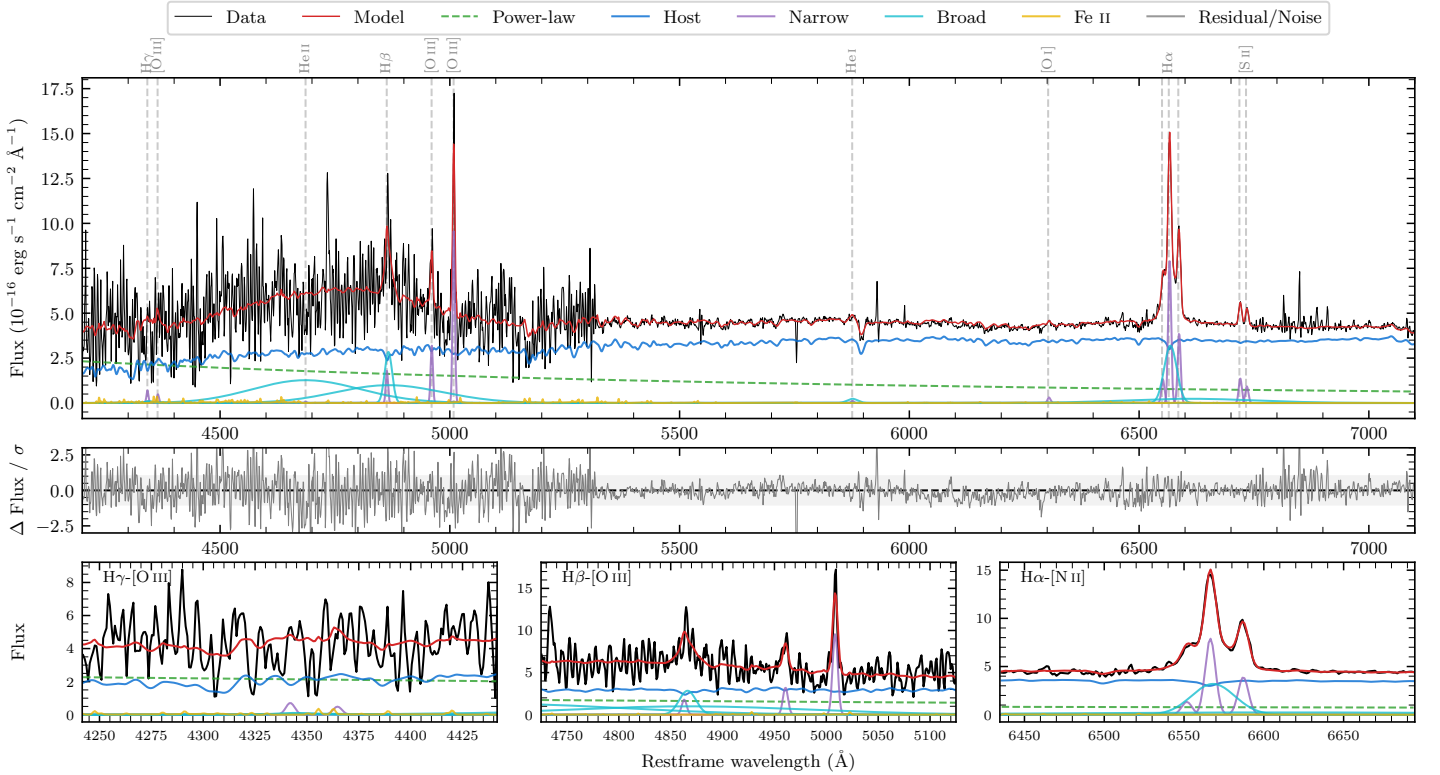
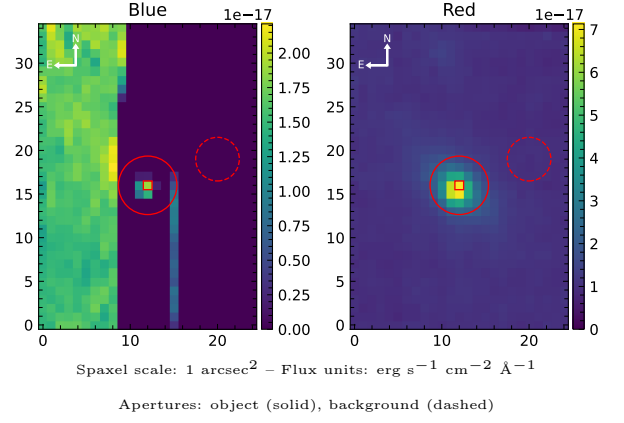


LEDA 815293

Spectrum ID	11812405_sp1	Spectrum type	Bad
Alt name	g0043170-222203	Quality flag	bad_blue
z	0.0627	AGN reference	6dFGS
RA, Dec	10.8207, -22.3673	MW $E(B-V)$	0.013
MJD	60255.49	Power law α_ν	0.46 ± 0.04
SNR/ \AA B/R	4.9/13.8	$\log L_{5100, \text{AGN}}$	42.84 ± 0.05
Obs airmass	1.01	$\log H\beta_{\text{Br}}/[\text{O III}]$	0.75 ± 0.06
SMSS ID	11812405	$\log M_{L5100}/M_\odot$	6.76 ± 0.06
Neighbour	None $< 15''$	$\log M_{\text{H}\alpha}/M_\odot$	6.45 ± 0.05
SMSS $\langle r_6'' \text{ap} \rangle$	16.57 ± 0.04	$\log M_{\text{H}\beta}/M_\odot$	6.98 ± 0.06
2MASS K_{ext}	12.56 ± 0.08	$\log M_{[\text{O III}]} / M_\odot$	6.76 ± 0.07



Emission Line Measurements

Line	$\log L$ (erg s ⁻¹)	FWHM (km s ⁻¹)	σ (km s ⁻¹)	EW (Å)
H γ Narrow	–	–	–	–
Hγ Broad	–	–	–	–
[O III] 4364	–	–	–	–
He II Narrow	–	–	–	–
He II Broad	41.57 ± 0.04	17661 ± 62	7500 ± 25	224.45 ± 12.01
H β Narrow	40.05 ± 0.21	353 ± 63	174 ± 34	7.25 ± 2.80
Hβ Broad	41.54 ± 0.05	1499 ± 92	5192 ± 113	228.95 ± 12.44
[O III] 5007	40.79 ± 0.03	353 ± 63	174 ± 34	43.12 ± 3.18
He I Narrow	38.95 ± 0.48	353 ± 63	148 ± 25	0.93 ± 0.91
He I Broad	39.83 ± 0.24	1360 ± 63	578 ± 25	7.00 ± 1.81
[O I] 6300	39.38 ± 0.21	353 ± 63	148 ± 25	3.00 ± 0.95
H α Narrow	40.81 ± 0.02	353 ± 63	148 ± 25	87.90 ± 1.52
Hα Broad	41.29 ± 0.03	1538 ± 65	2149 ± 116	268.46 ± 7.94
[N II] 6585	40.50 ± 0.03	353 ± 63	148 ± 25	43.76 ± 1.31
[S II] 6718	40.06 ± 0.05	353 ± 63	148 ± 25	16.53 ± 1.22
[S II] 6732	39.89 ± 0.08	353 ± 63	148 ± 25	11.25 ± 1.27

Emission Summary

H α broad SNR	3.77
H β broad SNR	4.22
H γ broad SNR	0.00
AGN frac	0.33
Host frac	0.67
$\log L_{5100, \text{Host}}$	43.14
Fe II/H β	–
Fe II/[O III]	–

Quality Flags

spurious_hab/hbb	0/0
15100	2
balmer	2
balmer_snr	2
hb_width	2
balmer_width	1