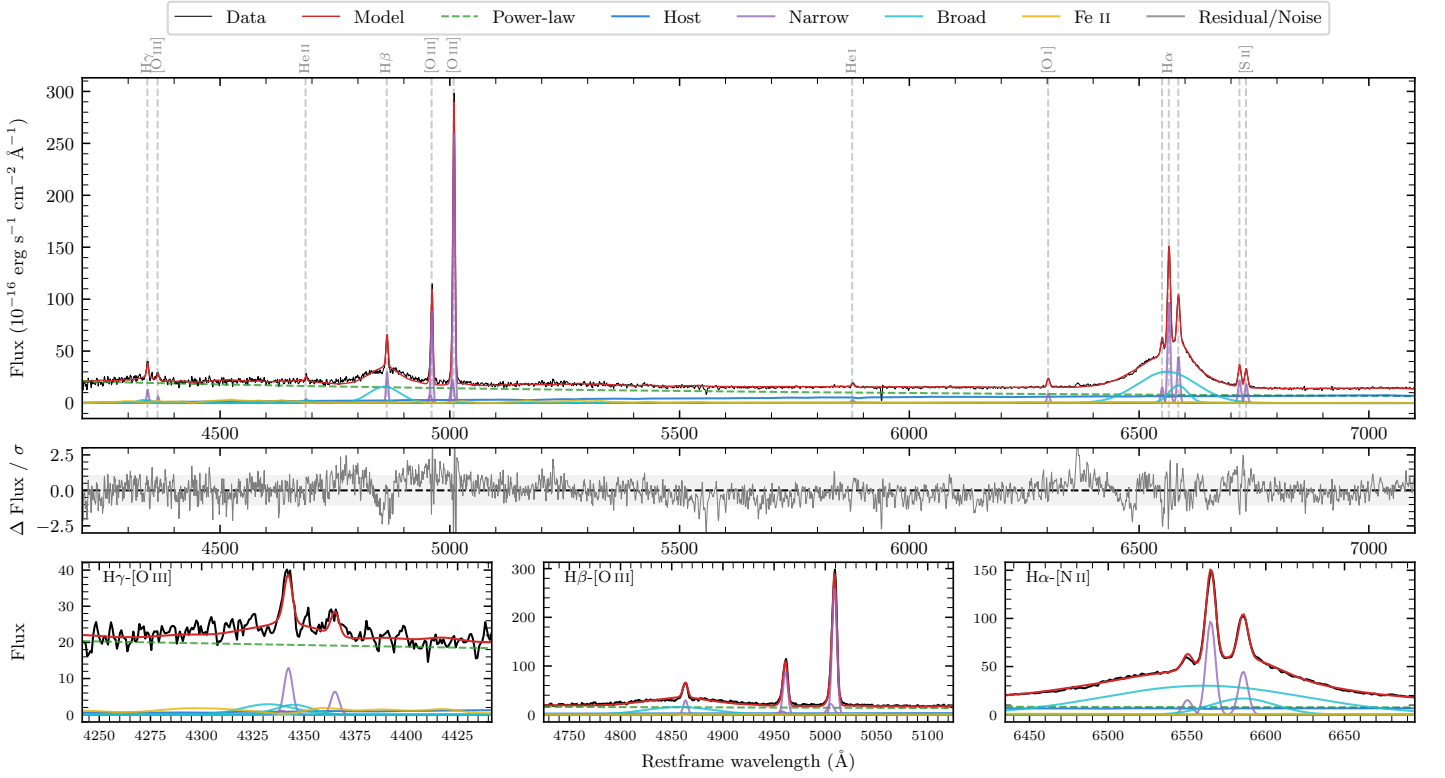
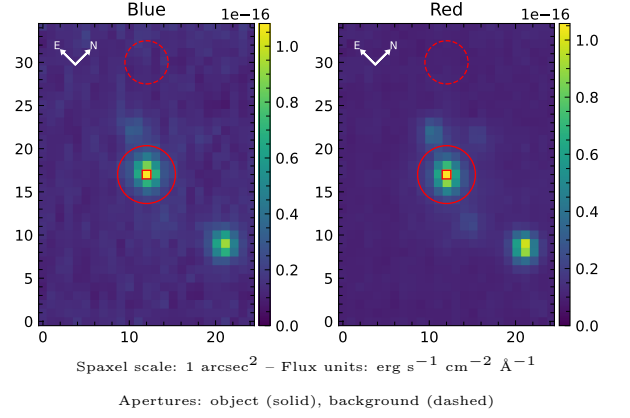


# NVSS J161143–343530

Spectrum ID	117747295_sp1	Spectrum type	Sy 1.5
Alt name	g1611435–343529	Quality flag	good
$z$	0.0612	AGN reference	6dFGS
RA, Dec	242.9314, –34.5913	MW $E(B - V)$	0.271
MJD	60163.38	Power law $\alpha_\nu$	$0.17 \pm 0.18$
SNR/ $\text{\AA}$ B/R	8.0/12.1	$\log L_{5100, \text{AGN}}$	$43.79 \pm 0.03$
Obs airmass	1.00	$\log H\beta_{\text{Br}}/[\text{O III}]$	$-0.10 \pm 0.15$
SMSS ID	117747295	$\log M_{L5100}/M_\odot$	$8.17 \pm 0.42$
Neighbour	1.8", 2190727975	$\log M_{\text{H}\alpha}/M_\odot$	$8.37 \pm 0.07$
SMSS $\langle r_6''_{\text{ap}} \rangle$	$15.83 \pm 0.07$	$\log M_{\text{H}\beta}/M_\odot$	$8.24 \pm 0.43$
2MASS $K_{\text{ext}}$	$11.91 \pm 0.06$	$\log M_{[\text{O III}]} / M_\odot$	$8.46 \pm 0.42$



## Emission Line Measurements

Line	$\log L$ ( $\text{erg s}^{-1}$ )	FWHM ( $\text{km s}^{-1}$ )	$\sigma$ ( $\text{km s}^{-1}$ )	EW ( $\text{\AA}$ )
H $\gamma$ Narrow	$40.87 \pm 0.08$	$342 \pm 63$	$166 \pm 28$	$3.99 \pm 0.39$
<b>H<math>\gamma</math> Broad</b>	<b><math>41.18 \pm 0.15</math></b>	<b><math>2388 \pm 737</math></b>	<b><math>765 \pm 177</math></b>	<b><math>8.54 \pm 0.83</math></b>
[O III] 4364	$40.48 \pm 0.14$	$328 \pm 63$	$138 \pm 25$	$1.79 \pm 0.33$
He II Narrow	$40.36 \pm 0.17$	$328 \pm 63$	$138 \pm 25$	$1.57 \pm 0.35$
<b>He II Broad</b>	<b><math>41.08 \pm 0.13</math></b>	<b><math>3284 \pm 482</math></b>	<b><math>1395 \pm 205</math></b>	<b><math>8.55 \pm 1.12</math></b>
H $\beta$ Narrow	$41.25 \pm 0.06$	$342 \pm 63$	$166 \pm 28$	$13.06 \pm 0.46$
<b>H<math>\beta</math> Broad</b>	<b><math>42.12 \pm 0.15</math></b>	<b><math>4737 \pm 1816</math></b>	<b><math>1773 \pm 688</math></b>	<b><math>97.08 \pm 1.60</math></b>
[O III] 5007	$42.22 \pm 0.01$	$342 \pm 63$	$166 \pm 28$	$127.39 \pm 0.61$
He I Narrow	$40.30 \pm 0.16$	$328 \pm 63$	$138 \pm 25$	$2.23 \pm 0.36$
<b>He I Broad</b>	<b><math>40.51 \pm 0.27</math></b>	<b><math>2908 \pm 1533</math></b>	<b><math>1235 \pm 651</math></b>	<b><math>3.69 \pm 1.13</math></b>
[O I] 6300	$40.79 \pm 0.04$	$328 \pm 63$	$138 \pm 25$	$8.01 \pm 0.40$
H $\alpha$ Narrow	$41.85 \pm 0.02$	$328 \pm 63$	$138 \pm 25$	$98.99 \pm 0.75$
<b>H<math>\alpha</math> Broad</b>	<b><math>42.73 \pm 0.01</math></b>	<b><math>5080 \pm 356</math></b>	<b><math>2326 \pm 33</math></b>	<b><math>768.51 \pm 2.56</math></b>
[N II] 6585	$41.51 \pm 0.03$	$328 \pm 63$	$138 \pm 25$	$46.14 \pm 0.71$
[S II] 6718	$41.20 \pm 0.02$	$328 \pm 63$	$138 \pm 25$	$23.71 \pm 0.53$
[S II] 6732	$41.12 \pm 0.03$	$328 \pm 63$	$138 \pm 25$	$20.08 \pm 0.53$

## Emission Summary

H $\alpha$ broad SNR	18.52
H $\beta$ broad SNR	6.89
H $\gamma$ broad SNR	1.90
AGN frac	0.81
Host frac	0.19
$\log L_{5100, \text{Host}}$	43.16
Fe II/H $\beta$	0.43
Fe II/[O III]	0.35

## Quality Flags

spurious_hab/hbb	0/0
15100	0
balmer	0
balmer_snr	1
hb_width	0
balmer_width	1