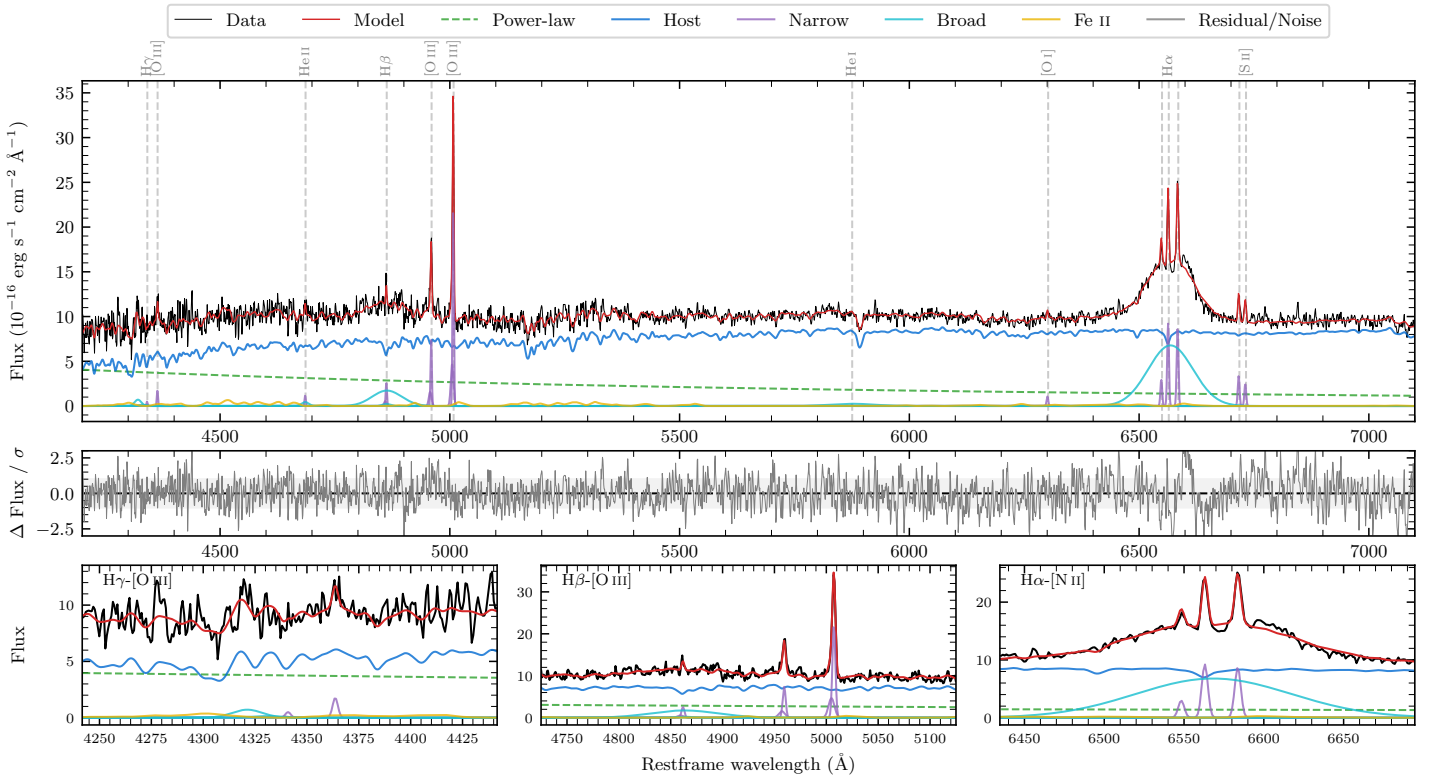
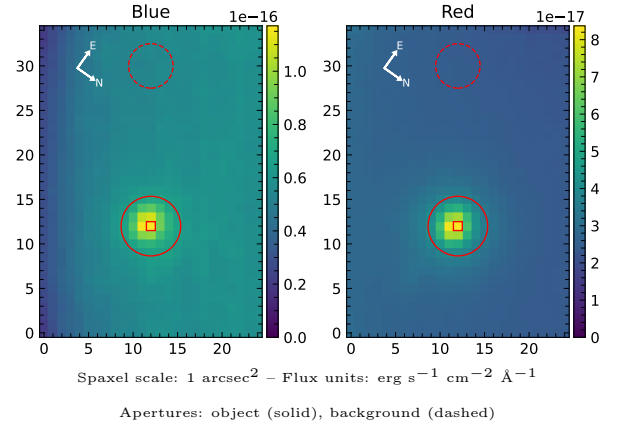


LEDA 133691

Spectrum ID	11771081_sp2	Spectrum type	Sy 1.5
Alt name	g0041321-223838	Quality flag	good
z	0.0628	AGN reference	6dFGS
RA, Dec	10.3836, -22.6438	MW $E(B - V)$	0.015
MJD	59438.82	Power law α_ν	0.41 ± 0.10
SNR/ \AA B/R	12.3/24.6	$\log L_{5100, \text{AGN}}$	43.09 ± 0.03
Obs airmass	1.17	$\log H\beta_{\text{Br}}/[\text{O III}]$	0.11 ± 0.04
SMSS ID	11771081	$\log M_{L5100}/M_\odot$	7.76 ± 0.08
Neighbour	None $< 15''$	$\log M_{\text{H}\alpha}/M_\odot$	7.90 ± 0.01
SMSS $\langle r_6''_{\text{ap}} \rangle$	16.22 ± 0.06	$\log M_{\text{H}\beta}/M_\odot$	7.71 ± 0.09
2MASS K_{ext}	12.29 ± 0.10	$\log M_{[\text{O III}]} / M_\odot$	7.79 ± 0.08



Emission Line Measurements

Line	$\log L$ (erg s ⁻¹)	FWHM (km s ⁻¹)	σ (km s ⁻¹)	EW (Å)
H γ Narrow	39.36 ± 0.41	231 ± 63	134 ± 25	0.64 ± 0.64
Hγ Broad	40.24 ± 0.18	1274 ± 108	355 ± 29	4.35 ± 1.23
[O III] 4364	39.76 ± 0.21	209 ± 63	87 ± 25	1.62 ± 0.48
He II Narrow	39.61 ± 0.28	209 ± 63	87 ± 25	1.36 ± 0.50
He II Broad	39.95 ± 0.30	1178 ± 62	500 ± 25	2.96 ± 1.18
H β Narrow	40.12 ± 0.11	231 ± 63	134 ± 25	4.78 ± 0.70
Hβ Broad	41.17 ± 0.04	4211 ± 392	1681 ± 34	53.77 ± 2.84
[O III] 5007	41.06 ± 0.01	231 ± 63	134 ± 25	45.43 ± 0.77
He I Narrow	—	—	—	—
He I Broad	40.50 ± 0.10	5881 ± 63	2497 ± 25	18.36 ± 2.44
[O I] 6300	39.70 ± 0.12	209 ± 63	87 ± 25	3.40 ± 0.53
H α Narrow	40.65 ± 0.02	209 ± 63	87 ± 25	33.89 ± 0.72
Hα Broad	41.93 ± 0.01	5226 ± 66	1945 ± 25	636.86 ± 3.56
[N II] 6585	40.63 ± 0.02	209 ± 63	87 ± 25	32.19 ± 0.71
[S II] 6718	40.22 ± 0.04	209 ± 63	87 ± 25	13.36 ± 0.68
[S II] 6732	40.09 ± 0.05	209 ± 63	87 ± 25	9.77 ± 0.69

Emission Summary

H α broad SNR	8.90
H β broad SNR	2.65
H γ broad SNR	1.12
AGN frac	0.27
Host frac	0.73
$\log L_{5100, \text{Host}}$	43.53
Fe II/H β	0.58
Fe II/[O III]	0.74

Quality Flags

spurious_hab/hbb	0/0
15100	2
balmer	1
balmer_snr	1
hb_width	0
balmer_width	2