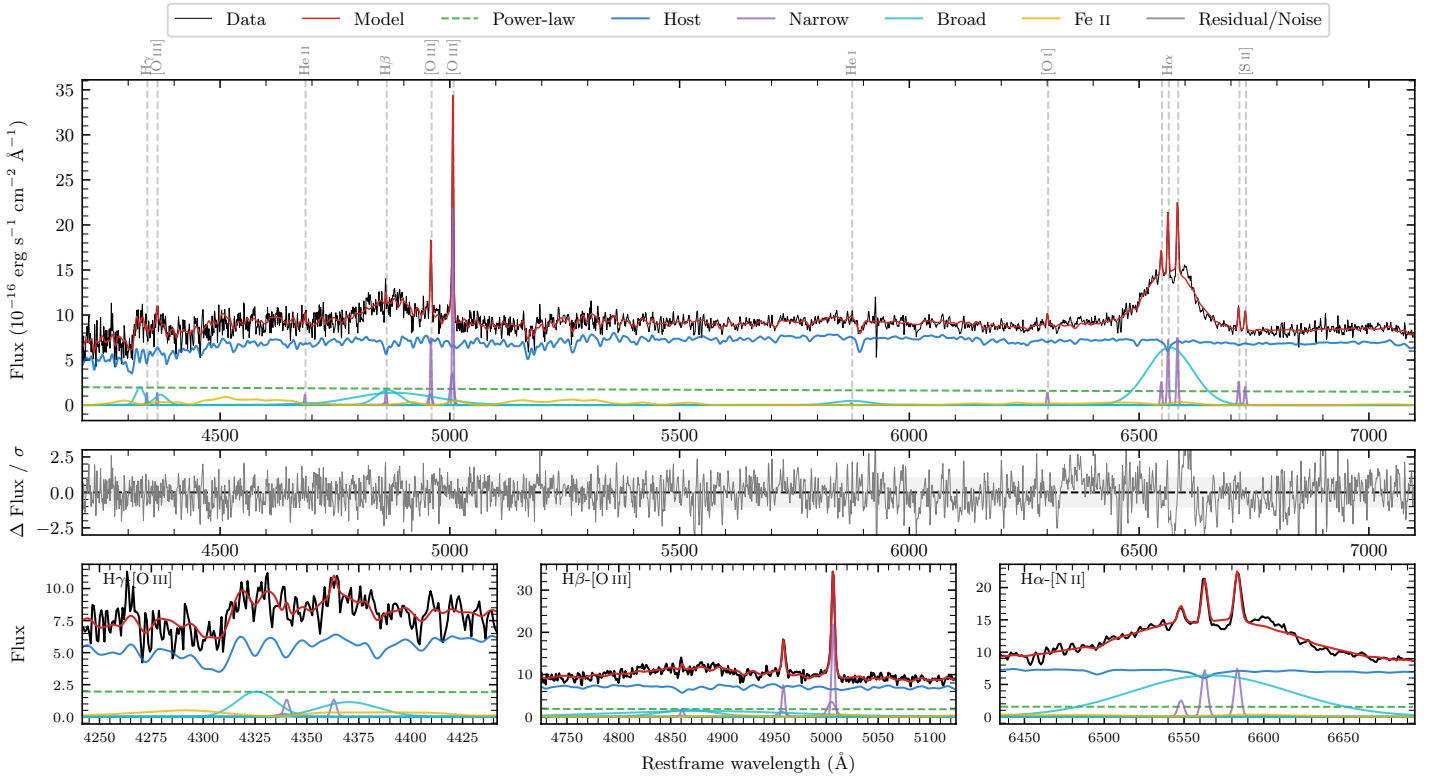
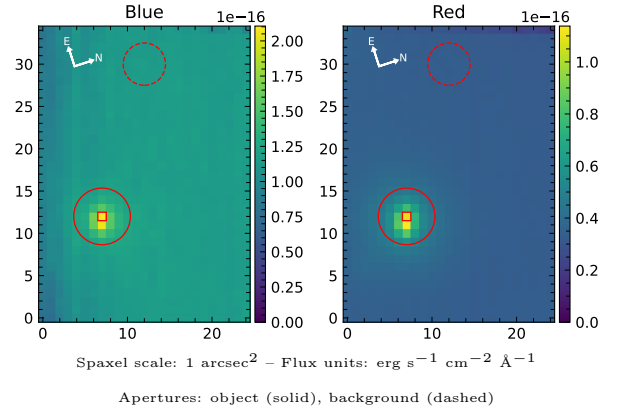


LEDA 133691

Spectrum ID	11771081_sp1	Spectrum type	Sy 1.5
Alt name	g0041321-223838	Quality flag	good
z	0.0628	AGN reference	6dFGS
RA, Dec	10.3836, -22.6438	MW $E(B - V)$	0.015
MJD	59397.83	Power law α_ν	-1.44 ± 0.14
SNR/ \AA B/R	10.8/23.6	$\log L_{5100, \text{AGN}}$	42.94 ± 0.05
Obs airmass	1.01	$\log H\beta_{\text{Br}} / [\text{O III}]$	-0.03 ± 0.33
SMSS ID	11771081	$\log M_{L5100} / M_\odot$	7.60 ± 0.04
Neighbour	None $< 15''$	$\log M_{H\alpha} / M_\odot$	7.91 ± 0.01
SMSS $\langle r_6'' \text{ap} \rangle$	16.22 ± 0.06	$\log M_{H\beta} / M_\odot$	7.56 ± 0.16
2MASS K_{ext}	12.29 ± 0.10	$\log M_{[\text{O III}]} / M_\odot$	7.70 ± 0.03



Emission Line Measurements

Line	$\log L$ (erg s $^{-1}$)	FWHM (km s $^{-1}$)	σ (km s $^{-1}$)	EW (Å)
H γ Narrow	39.79 ± 0.26	225 ± 63	156 ± 28	3.32 ± 1.64
Hγ Broad	40.95 ± 0.07	—	1697 ± 42	48.06 ± 3.86
[O III] 4364	39.63 ± 0.29	205 ± 63	86 ± 25	2.32 ± 1.00
He II Narrow	39.59 ± 0.27	205 ± 63	86 ± 25	2.19 ± 0.88
He II Broad	—	—	—	—
H β Narrow	39.96 ± 0.14	225 ± 63	156 ± 28	5.23 ± 1.37
Hβ Broad	$41.04^{+0.58}_{-0.07}$	3783 ± 97	1407 ± 41	63.25 ± 3.84
[O III] 5007	41.07 ± 0.02	225 ± 63	156 ± 28	68.14 ± 1.46
He I Narrow	38.97 ± 0.40	205 ± 63	86 ± 25	0.59 ± 0.46
He I Broad	40.69 ± 0.06	4797 ± 116	2037 ± 49	30.88 ± 2.42
[O I] 6300	39.82 ± 0.08	205 ± 63	86 ± 25	4.35 ± 0.51
H α Narrow	40.54 ± 0.02	205 ± 63	86 ± 25	23.42 ± 0.60
Hα Broad	41.91 ± 0.01	5352 ± 72	1991 ± 25	554.37 ± 3.00
[N II] 6585	40.56 ± 0.02	205 ± 63	86 ± 25	24.59 ± 0.58
[S II] 6718	40.10 ± 0.04	205 ± 63	86 ± 25	8.71 ± 0.52
[S II] 6732	40.01 ± 0.06	205 ± 63	86 ± 25	7.03 ± 0.59

Emission Summary

H α broad SNR	8.04
H β broad SNR	2.07
H γ broad SNR	2.47
AGN frac	0.21
Host frac	0.79
$\log L_{5100, \text{Host}}$	43.51
Fe II/H β	—
Fe II/[O III]	—

Quality Flags

spurious_hab/hbb	0/1
15100	1
balmer	1
balmer_snr	1
hb_width	0
balmer_width	2