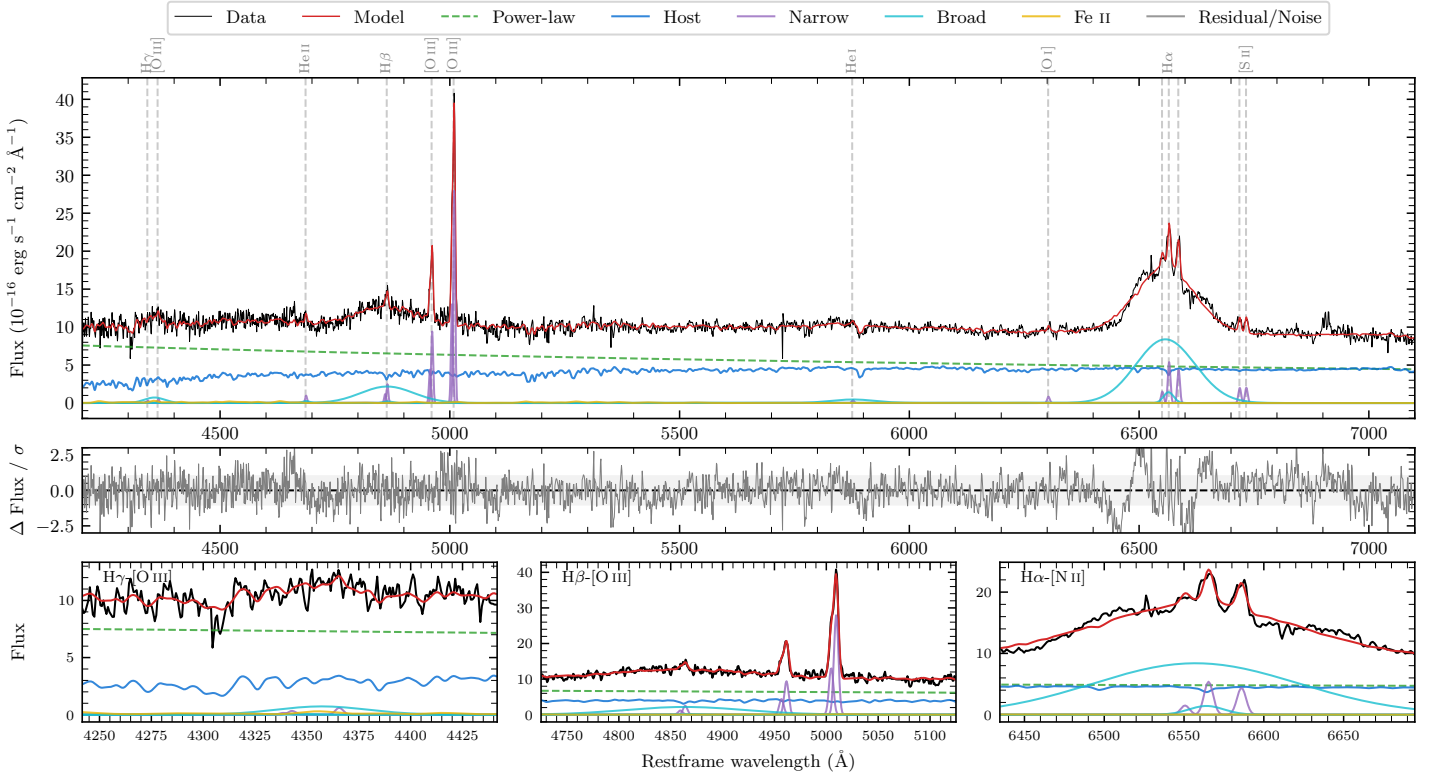
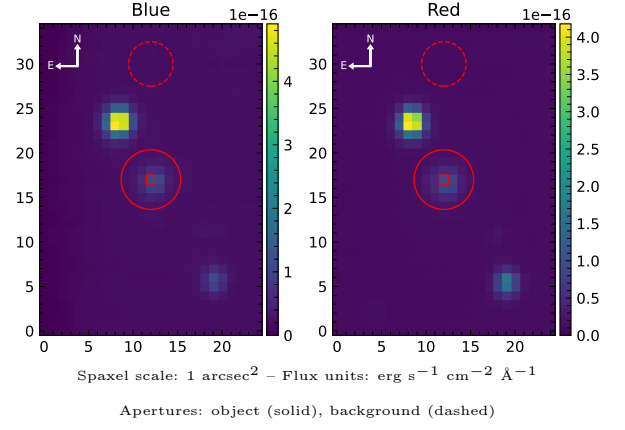


LEDA 696738

Spectrum ID	116519057_sp1	Spectrum type	Sy 1.5
Alt name	6016290033903149568	Quality flag	good
z	0.1010	AGN reference	AllBRICS2
RA, Dec	236.6031, -32.1111	MW $E(B - V)$	0.082
MJD	60387.73	Power law α_ν	-0.98 ± 0.14
SNR/ \AA B/R	15.8/19.2	$\log L_{5100, \text{AGN}}$	43.91 ± 0.02
Obs airmass	1.01	$\log H\beta_{\text{Br}}/[\text{O III}]$	0.16 ± 0.02
SMSS ID	116519057	$\log M_{L5100}/M_\odot$	8.65 ± 0.06
Neighbour	7.5", 116519058	$\log M_{\text{H}\alpha}/M_\odot$	8.44 ± 0.04
SMSS $\langle r_6''_{\text{ap}} \rangle$	nan \pm nan	$\log M_{\text{H}\beta}/M_\odot$	8.60 ± 0.06
2MASS K_{ext}	12.60 ± 0.10	$\log M_{[\text{O III}]} / M_\odot$	8.69 ± 0.05



Emission Line Measurements

Line	$\log L$ (erg s ⁻¹)	FWHM (km s ⁻¹)	σ (km s ⁻¹)	EW (Å)
H γ Narrow	39.81 ± 0.44	453 ± 64	186 ± 25	0.34 ± 0.24
Hγ Broad	41.08 ± 0.11	3553 ± 137	1222 ± 32	6.28 ± 0.80
[O III] 4364	39.90 ± 0.35	308 ± 63	129 ± 25	0.43 ± 0.23
He II Narrow	40.15 ± 0.24	308 ± 63	129 ± 25	0.80 ± 0.24
He II Broad	40.18 ± 0.39	1200 ± 64	510 ± 26	0.85 ± 0.45
H β Narrow	40.74 ± 0.09	453 ± 64	186 ± 25	3.28 ± 0.28
Hβ Broad	41.96 ± 0.02	7792 ± 490	3074 ± 33	53.88 ± 1.44
[O III] 5007	41.80 ± 0.01	453 ± 64	186 ± 25	38.72 ± 0.34
He I Narrow	39.87 ± 0.31	308 ± 63	129 ± 25	0.54 ± 0.24
He I Broad	41.21 ± 0.08	5804 ± 69	2465 ± 28	11.56 ± 1.10
[O I] 6300	40.21 ± 0.15	308 ± 63	129 ± 25	1.25 ± 0.27
H α Narrow	41.03 ± 0.04	308 ± 63	129 ± 25	8.74 ± 0.34
Hα Broad	42.60 ± 0.01	6124 ± 180	2515 ± 25	319.20 ± 1.55
[N II] 6585	40.95 ± 0.04	308 ± 63	129 ± 25	7.17 ± 0.37
[S II] 6718	40.61 ± 0.07	308 ± 63	129 ± 25	3.41 ± 0.36
[S II] 6732	40.62 ± 0.06	308 ± 63	129 ± 25	3.46 ± 0.32

Emission Summary

H α broad SNR	13.86
H β broad SNR	3.43
H γ broad SNR	1.14
AGN frac	0.63
Host frac	0.37
$\log L_{5100, \text{Host}}$	43.68
Fe II/H β	0.13
Fe II/[O III]	0.18

Quality Flags

spurious_hab/hbb	0/0
15100	0
balmer	0
balmer_snr	1
hb_width	0
balmer_width	0