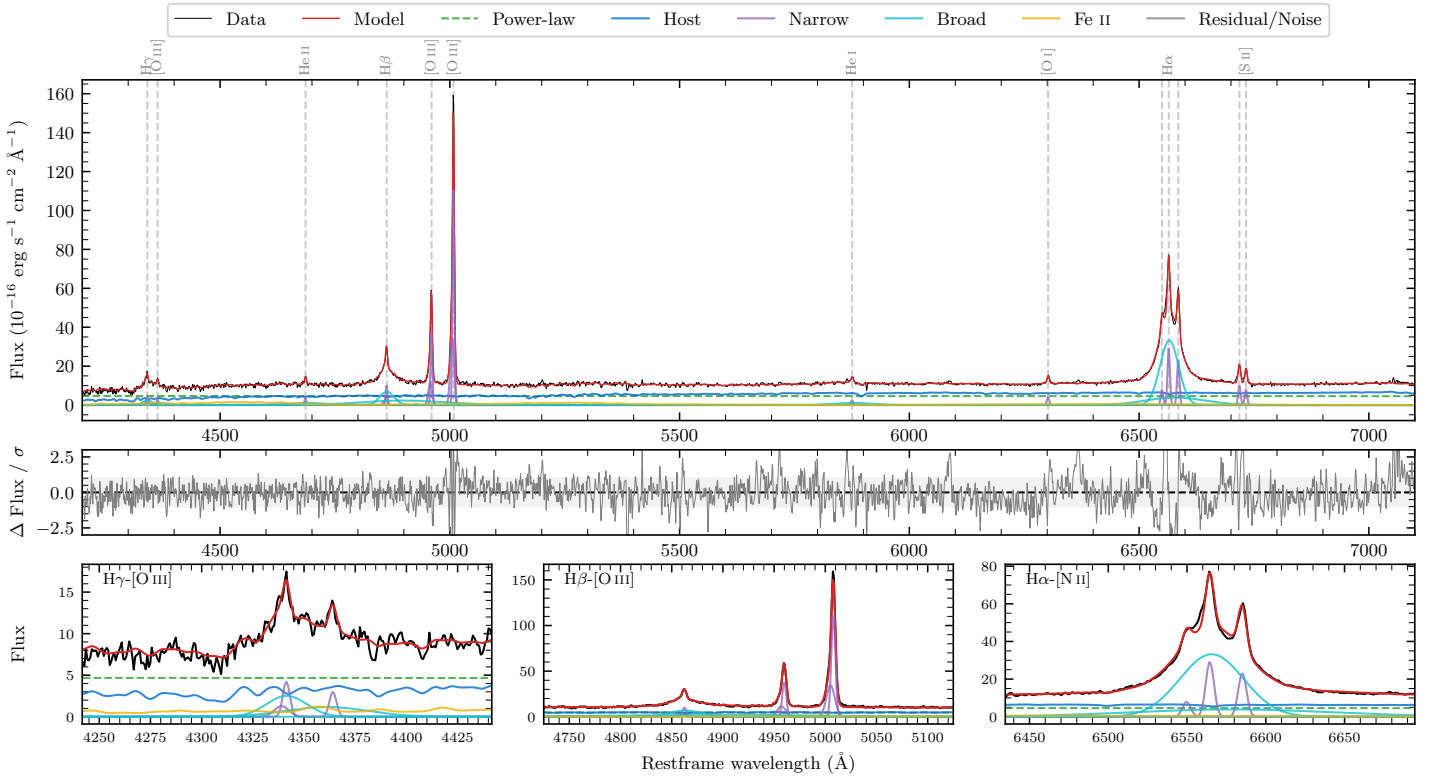
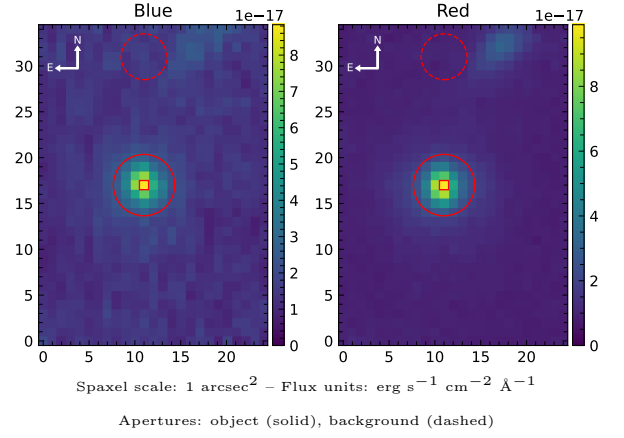


# IRAS F21318–2739

Spectrum ID	1162188_sp1	Spectrum type	Sy 1.8
Alt name	XSS J2134–2720	Quality flag	good
$z$	0.0669	AGN reference	<a href="#">B+2006</a>
RA, Dec	323.6881, -27.4321	MW $E(B - V)$	0.030
MJD	60909.54	Power law $\alpha_\nu$	$-1.95 \pm 0.04$
SNR/ $\text{\AA}$ B/R	11.4/23.5	$\log L_{5100, \text{AGN}}$	$43.41 \pm 0.02$
Obs airmass	1.01	$\log H\beta_{\text{Br}}/[\text{O III}]$	$-0.53 \pm 0.24$
SMSS ID	<a href="#">1162188</a>	$\log M_{L5100}/M_\odot$	$7.36 \pm 0.03$
Neighbour	4.8", <a href="#">2001882089</a>	$\log M_{H\alpha}/M_\odot$	$7.50 \pm 0.03$
SMSS $\langle r_{6'' \text{ap}} \rangle$	$15.94 \pm 0.17$	$\log M_{H\beta}/M_\odot$	$7.32 \pm 0.13$
2MASS $K_{\text{ext}}$	$11.47 \pm 0.04$	$\log M_{[\text{O III}]} / M_\odot$	$7.73 \pm 0.03$



## Emission Line Measurements

Line	$\log L$ ( $\text{erg s}^{-1}$ )	FWHM ( $\text{km s}^{-1}$ )	$\sigma$ ( $\text{km s}^{-1}$ )	EW ( $\text{\AA}$ )
H $\gamma$ Narrow	$40.53 \pm 0.09$	$326 \pm 63$	$196 \pm 25$	$6.76 \pm 0.72$
<b>H<math>\gamma</math> Broad</b>	<b><math>41.15 \pm 0.05</math></b>	<b><math>2110 \pm 388</math></b>	<b><math>934 \pm 83</math></b>	<b><math>27.49 \pm 1.65</math></b>
[O III] 4364	$40.18 \pm 0.13$	$284 \pm 63$	$119 \pm 25$	$2.97 \pm 0.48$
He II Narrow	$40.32 \pm 0.07$	$284 \pm 63$	$119 \pm 25$	$4.08 \pm 0.45$
<b>He II Broad</b>	—	—	—	—
H $\beta$ Narrow	$40.97 \pm 0.03$	$326 \pm 63$	$196 \pm 25$	$18.36 \pm 0.65$
<b>H<math>\beta</math> Broad</b>	<b><math>41.50^{+0.47}_{-0.02}</math></b>	<b><math>2272 \pm 82</math></b>	<b><math>861 \pm 37</math></b>	<b><math>62.15 \pm 1.28</math></b>
[O III] 5007	$42.03 \pm 0.01$	$326 \pm 63$	$196 \pm 25$	$210.20 \pm 0.79$
He I Narrow	$40.23 \pm 0.05$	$284 \pm 63$	$119 \pm 25$	$3.37 \pm 0.26$
<b>He I Broad</b>	<b><math>41.15 \pm 0.04</math></b>	<b><math>5107 \pm 205</math></b>	<b><math>2169 \pm 87</math></b>	<b><math>28.58 \pm 1.16</math></b>
[O I] 6300	$40.48 \pm 0.03$	$284 \pm 63$	$119 \pm 25$	$5.99 \pm 0.26$
H $\alpha$ Narrow	$41.35 \pm 0.01$	$284 \pm 63$	$119 \pm 25$	$44.49 \pm 0.45$
<b>H<math>\alpha</math> Broad</b>	<b><math>42.43 \pm 0.01</math></b>	<b><math>2332 \pm 64</math></b>	<b><math>1083 \pm 25</math></b>	<b><math>538.41 \pm 1.53</math></b>
[N II] 6585	$41.25 \pm 0.01$	$284 \pm 63$	$119 \pm 25$	$35.41 \pm 0.39$
[S II] 6718	$40.89 \pm 0.01$	$284 \pm 63$	$119 \pm 25$	$15.43 \pm 0.30$
[S II] 6732	$40.79 \pm 0.02$	$284 \pm 63$	$119 \pm 25$	$12.37 \pm 0.31$

## Emission Summary

H $\alpha$ broad SNR	41.03
H $\beta$ broad SNR	7.64
H $\gamma$ broad SNR	3.60
AGN frac	0.50
Host frac	0.50
$\log L_{5100, \text{Host}}$	43.41
Fe II/H $\beta$	—
Fe II/[O III]	—

## Quality Flags

spurious_hab/hbb	0/1
15100	1
balmer	0
balmer_snr	0
hb_width	0
balmer_width	1