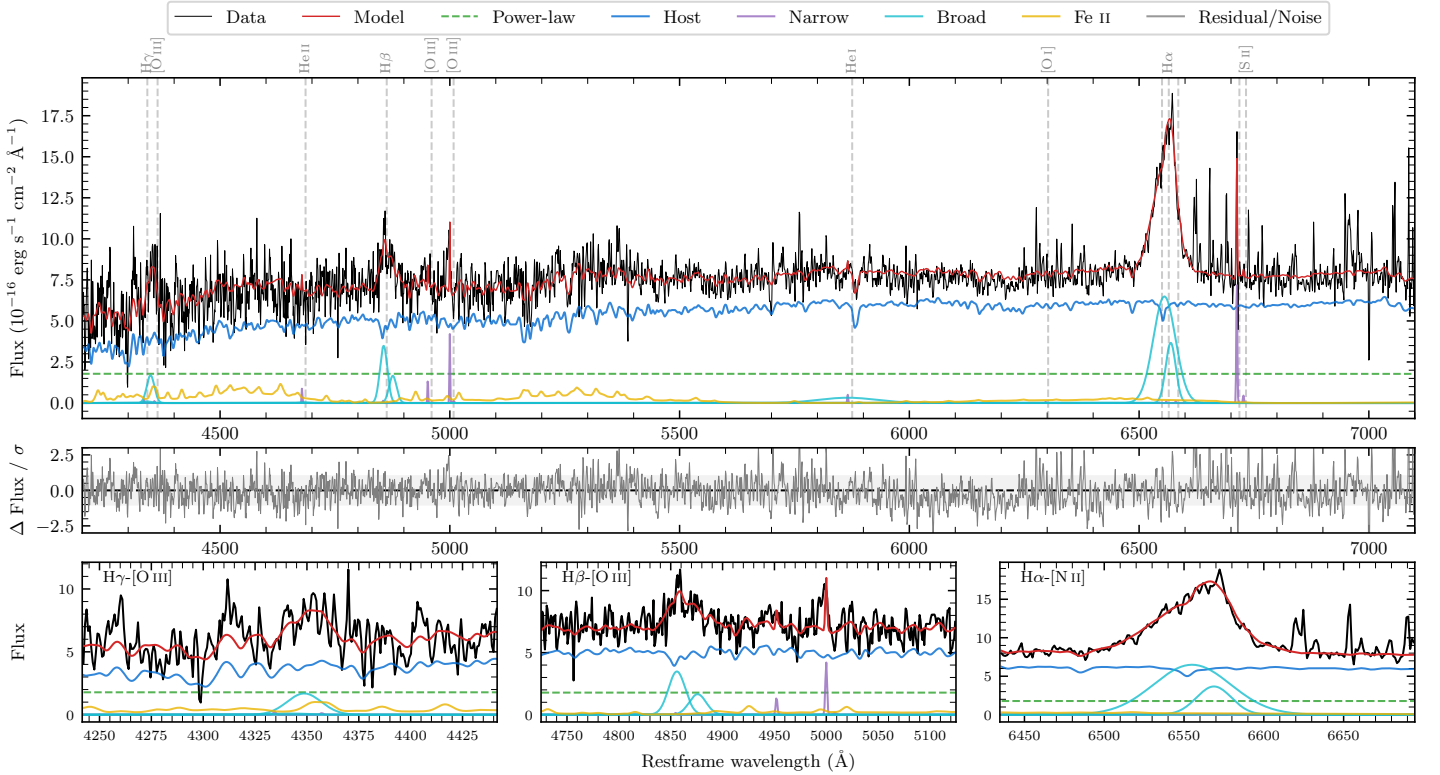
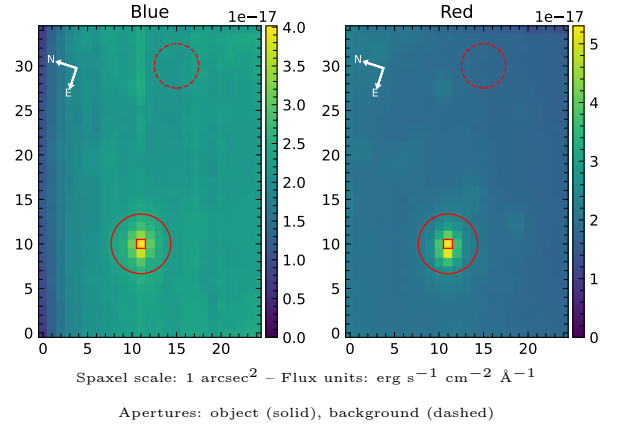


6dFGS gJ155400.2–365535

Spectrum ID	115496036_sp1	Spectrum type	Sy 1.0
Alt name	g1554002–365535	Quality flag	good
z	0.0934	AGN reference	6dFGS
RA, Dec	238.5008, –36.9263	MW $E(B - V)$	0.333
MJD	59725.56	Power law α_ν	-1.99 ± 0.01
SNR/ \AA B/R	6.0/11.4	$\log L_{5100, \text{AGN}}$	43.30 ± 0.05
Obs airmass	1.01	$\log H\beta_{\text{Br}}/[\text{O III}]$	1.06 ± 0.08
SMSS ID	115496036	$\log M_{L5100}/M_\odot$	7.14 ± 0.13
Neighbour	6.8", 115496024	$\log M_{\text{H}\alpha}/M_\odot$	7.23 ± 0.03
SMSS $\langle r_6'' \text{ap} \rangle$	18.00 ± 0.03	$\log M_{\text{H}\beta}/M_\odot$	7.10 ± 0.13
2MASS K_{ext}	12.81 ± 0.11	$\log M_{[\text{O III}]} / M_\odot$	6.73 ± 0.14



Emission Line Measurements

Line	$\log L$ (erg s ⁻¹)	FWHM (km s ⁻¹)	σ (km s ⁻¹)	EW (Å)
H γ Narrow	–	–	–	–
Hγ Broad	40.94 ± 0.08	1358 ± 69	456 ± 25	22.68 ± 4.09
[O III] 4364	–	–	–	–
He II Narrow	39.62 ± 0.24	127 ± 62	50 ± 25	1.06 ± 0.96
He II Broad	–	–	–	–
H β Narrow	–	–	–	–
Hβ Broad	41.40 ± 0.04	1855 ± 278	697 ± 28	64.20 ± 3.78
[O III] 5007	40.34 ± 0.07	122 ± 62	128 ± 71	5.77 ± 1.67
He I Narrow	39.49 ± 0.25	127 ± 62	50 ± 25	0.79 ± 0.60
He I Broad	41.09 ± 0.13	7579 ± 62	3218 ± 25	31.39 ± 4.98
[O I] 6300	–	–	–	–
H α Narrow	–	–	–	–
Hα Broad	42.07 ± 0.01	2196 ± 75	860 ± 25	303.45 ± 3.61
[N II] 6585	–	–	–	–
[S II] 6718	40.71 ± 0.03	127 ± 62	50 ± 25	13.16 ± 1.01
[S II] 6732	39.50 ± 0.28	127 ± 62	50 ± 25	0.80 ± 0.70

Emission Summary

H α broad SNR	8.19
H β broad SNR	3.10
H γ broad SNR	1.51
AGN frac	0.27
Host frac	0.73
$\log L_{5100, \text{Host}}$	43.73
Fe II/H β	2.02
Fe II/[O III]	22.45

Quality Flags

spurious_hab/hbb	0/0
15100	1
balmer	0
balmer_snr	1
hb_width	0
balmer_width	2