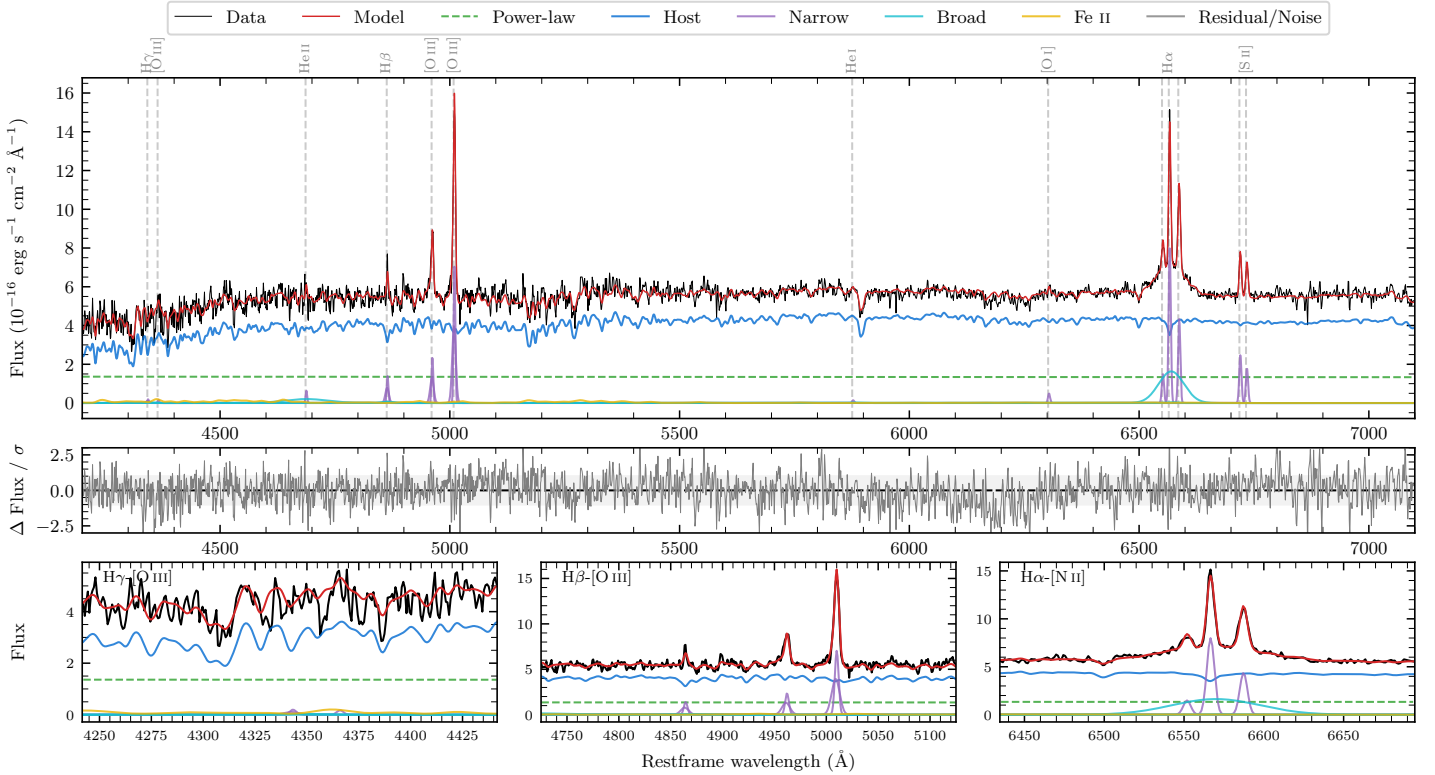
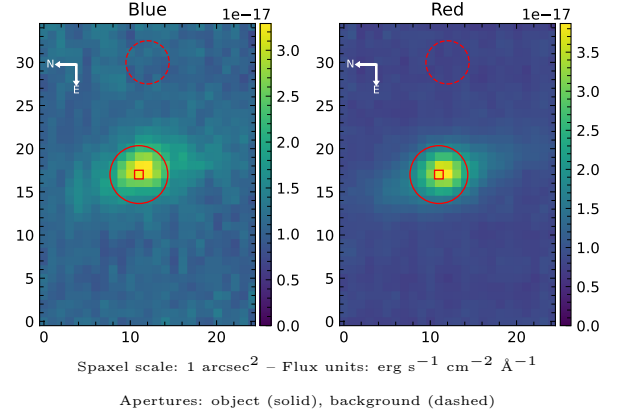


LEDA 172061

Spectrum ID	11541001_sp1	Spectrum type	Sy 1.8+
Alt name	g0026368-241545	Quality flag	good
z	0.0558	AGN reference	6dFGS
RA, Dec	6.6534, -24.2626	MW $E(B - V)$	0.013
MJD	60224.56	Power law α_ν	-1.96 ± 0.04
SNR/ \AA B/R	14.6/28.5	$\log L_{5100, \text{AGN}}$	42.71 ± 0.03
Obs airmass	1.01	$\log H\beta_{\text{Br}}/[\text{O III}]$	< -0.51
SMSS ID	11541001	$\log M_{L5100}/M_\odot$	—
Neighbour	8.3", 2020533820	$\log M_{\text{H}\alpha}/M_\odot$	6.79 ± 0.05
SMSS $\langle r_6''_{\text{ap}} \rangle$	16.63 ± 0.05	$\log M_{\text{H}\beta}/M_\odot$	—
2MASS K_{ext}	12.60 ± 0.09	$\log M_{[\text{O III}]} / M_\odot$	—



Emission Line Measurements

Line	$\log L$ (erg s ⁻¹)	FWHM (km s ⁻¹)	σ (km s ⁻¹)	EW (Å)
H γ Narrow	39.12 ± 0.37	325 ± 63	190 ± 25	1.32 ± 0.87
Hγ Broad	—	—	—	—
[O III] 4364	—	—	—	—
He II Narrow	39.33 ± 0.20	259 ± 63	109 ± 25	2.13 ± 0.64
He II Broad	40.27 ± 0.12	7029 ± 63	2985 ± 25	18.74 ± 2.98
H β Narrow	40.03 ± 0.06	325 ± 63	190 ± 25	10.60 ± 0.79
Hβ Broad	< 40.23	—	—	—
[O III] 5007	40.74 ± 0.01	325 ± 63	190 ± 25	55.06 ± 0.84
He I Narrow	38.79 ± 0.36	259 ± 63	109 ± 25	0.62 ± 0.32
He I Broad	—	—	—	—
[O I] 6300	39.35 ± 0.12	259 ± 63	109 ± 25	2.25 ± 0.34
H α Narrow	40.57 ± 0.01	259 ± 63	109 ± 25	37.65 ± 0.44
Hα Broad	40.95 ± 0.02	2894 ± 84	1079 ± 25	90.06 ± 1.35
[N II] 6585	40.31 ± 0.02	259 ± 63	109 ± 25	20.65 ± 0.46
[S II] 6718	40.07 ± 0.02	259 ± 63	109 ± 25	11.94 ± 0.36
[S II] 6732	39.94 ± 0.03	259 ± 63	109 ± 25	8.74 ± 0.35

Emission Summary

H α broad SNR	4.86
H β broad SNR	0.49
H γ broad SNR	0.00
AGN frac	0.26
Host frac	0.74
$\log L_{5100, \text{Host}}$	43.16
Fe II/H β	—
Fe II/[O III]	0.46

Quality Flags

spurious_hab/hbb	0/0
15100	1
balmer	2
balmer_snr	2
hb_width	2
balmer_width	2