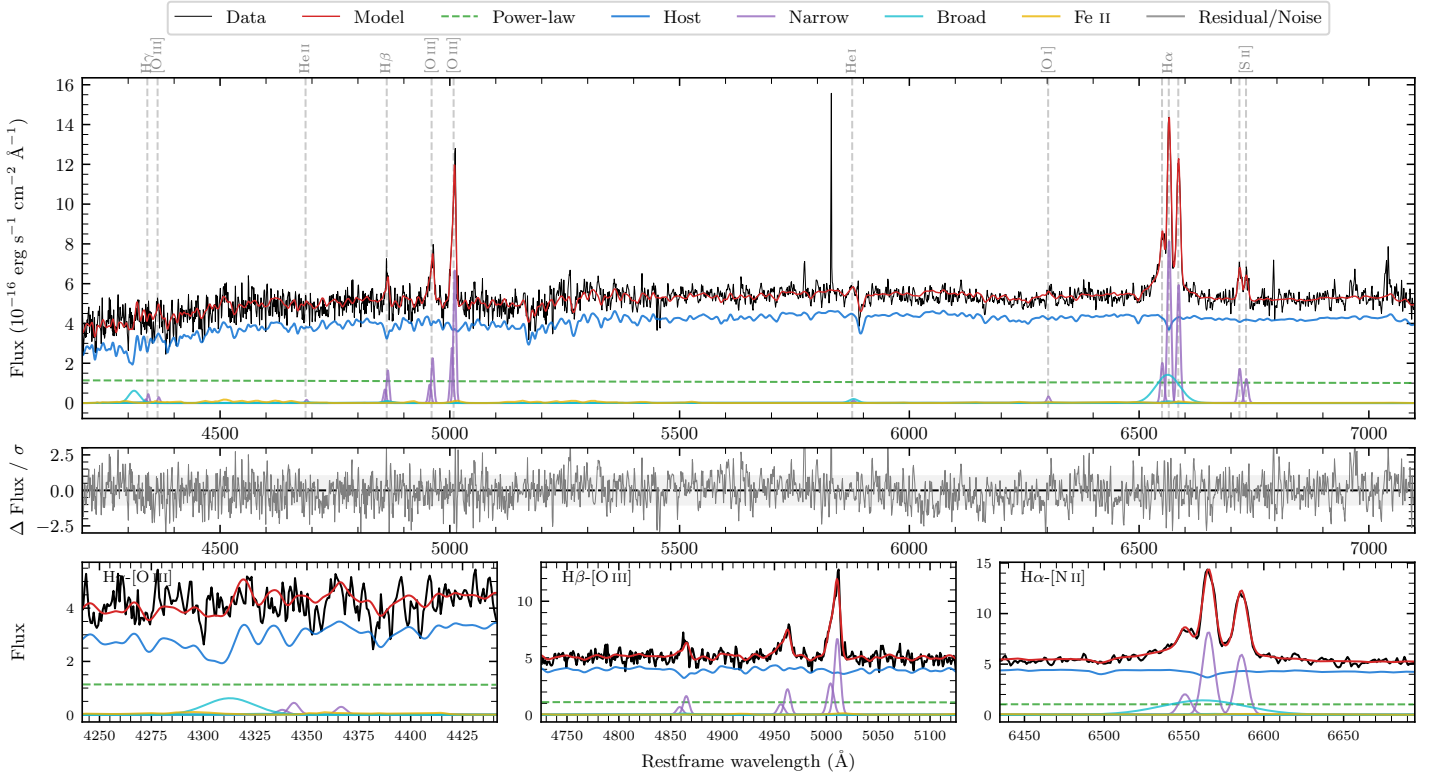
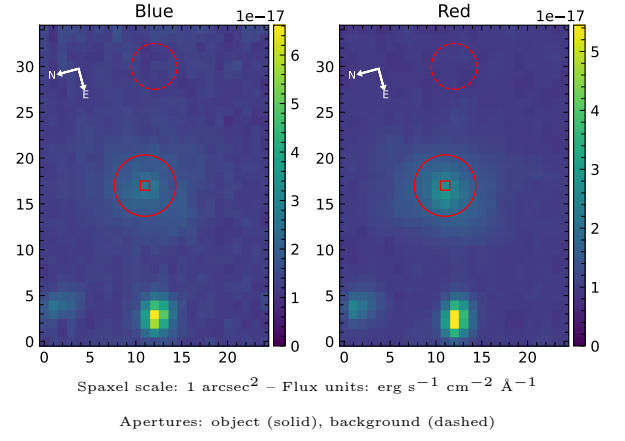


LEDA 696362

Spectrum ID	114022583_sp1	Spectrum type	Sy 1.8+
Alt name	g1531444-320821	Quality flag	good
z	0.0815	AGN reference	6dFGS
RA, Dec	232.9350, -32.1390	MW $E(B - V)$	0.130
MJD	60163.39	Power law α_ν	-1.77 ± 0.17
SNR/ \AA B/R	11.4/18.3	$\log L_{5100, \text{AGN}}$	42.96 ± 0.05
Obs airmass	1.01	$\log H\beta_{\text{Br}}/[\text{O III}]$	< -0.49
SMSS ID	114022583	$\log M_{L5100}/M_\odot$	—
Neighbour	13.8", 114022584	$\log M_{\text{H}\alpha}/M_\odot$	6.89 ± 0.05
SMSS $\langle r_6''_{\text{ap}} \rangle$	17.09 ± 0.10	$\log M_{\text{H}\beta}/M_\odot$	—
2MASS K_{ext}	12.75 ± 0.12	$\log M_{[\text{O III}]} / M_\odot$	—



Emission Line Measurements

Line	$\log L$ (erg s^{-1})	FWHM (km s^{-1})	σ (km s^{-1})	EW (\AA)
H γ Narrow	39.85 ± 0.24	549 ± 72	252 ± 25	3.86 ± 1.21
Hγ Broad	—	—	—	—
[O III] 4364	39.51 ± 0.35	406 ± 62	172 ± 25	1.78 ± 1.07
He II Narrow	39.29 ± 0.47	406 ± 62	172 ± 25	1.08 ± 1.01
He II Broad	—	—	—	—
H β Narrow	40.46 ± 0.08	549 ± 72	252 ± 25	16.39 ± 1.15
Hβ Broad	< 40.59	—	—	—
[O III] 5007	41.09 ± 0.01	549 ± 72	252 ± 25	69.22 ± 1.31
He I Narrow	39.28 ± 0.47	406 ± 62	172 ± 25	1.12 ± 1.12
He I Broad	39.94 ± 0.26	1178 ± 62	500 ± 25	5.10 ± 1.68
[O I] 6300	39.72 ± 0.19	406 ± 62	172 ± 25	3.11 ± 0.80
H α Narrow	41.13 ± 0.01	406 ± 62	172 ± 25	81.44 ± 0.95
Hα Broad	41.22 ± 0.02	2675 ± 107	1017 ± 25	99.55 ± 2.38
[N II] 6585	40.99 ± 0.01	406 ± 62	172 ± 25	59.26 ± 0.93
[S II] 6718	40.46 ± 0.04	406 ± 62	172 ± 25	17.62 ± 1.38
[S II] 6732	40.31 ± 0.07	406 ± 62	172 ± 25	12.43 ± 1.25

Emission Summary

H α broad SNR	3.48
H β broad SNR	0.54
H γ broad SNR	0.00
AGN frac	0.22
Host frac	0.78
$\log L_{5100, \text{Host}}$	43.50
Fe II/H β	—
Fe II/[O III]	0.33

Quality Flags

spurious_hab/hbb	0/0
15100	1
balmer	2
balmer_snr	2
hb_width	2
balmer_width	2