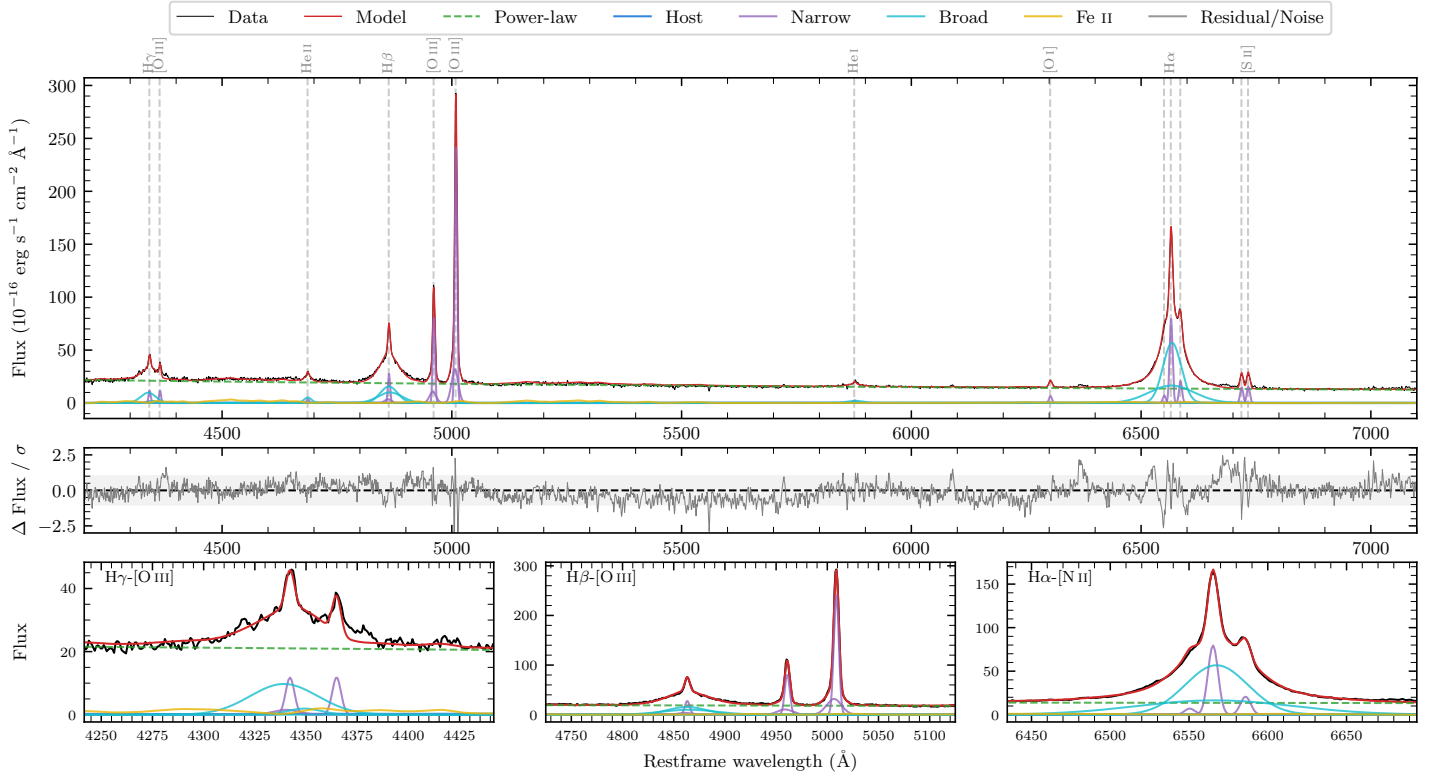
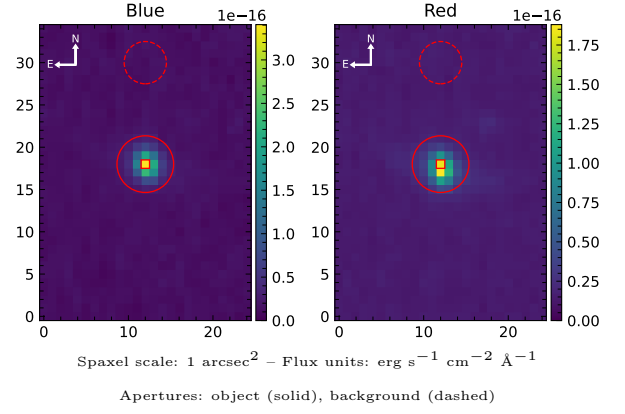


# LEDA 198513

Spectrum ID	1139667_sp1	Spectrum type	Sy 1.5
Alt name	g2146361-305141	Quality flag	good
$z$	0.0756	AGN reference	6dFGS
RA, Dec	326.6502, -30.8612	MW $E(B-V)$	0.027
MJD	60088.8	Power law $\alpha_\nu$	$-0.95 \pm 0.04$
SNR/ $\text{\AA}$ B/R	8.9/11.4	$\log L_{5100, \text{AGN}}$	$44.10 \pm 0.01$
Obs airmass	1.00	$\log H\beta_{\text{Br}}/[\text{O III}]$	$-0.13 \pm 0.04$
SMSS ID	1139667	$\log M_{L5100}/M_\odot$	$7.99 \pm 0.11$
Neighbour	None $< 15''$	$\log M_{\text{H}\alpha}/M_\odot$	$7.81 \pm 0.05$
SMSS $\langle r_6'' \text{ap} \rangle$	$15.59 \pm 0.09$	$\log M_{\text{H}\beta}/M_\odot$	$8.04 \pm 0.11$
2MASS $K_{\text{ext}}$	$12.59 \pm 0.06$	$\log M_{[\text{O III}]} / M_\odot$	$8.29 \pm 0.11$



## Emission Line Measurements

Line	$\log L$ ( $\text{erg s}^{-1}$ )	FWHM ( $\text{km s}^{-1}$ )	$\sigma$ ( $\text{km s}^{-1}$ )	EW ( $\text{\AA}$ )
H $\gamma$ Narrow	$41.12 \pm 0.13$	$374 \pm 63$	$271 \pm 34$	$4.47 \pm 0.53$
<b>H<math>\gamma</math> Broad</b>	<b><math>41.85 \pm 0.12</math></b>	<b><math>2801 \pm 1052</math></b>	<b><math>970 \pm 379</math></b>	<b><math>22.57 \pm 0.90</math></b>
[O III] 4364	$40.98 \pm 0.14$	$348 \pm 63$	$147 \pm 25$	$3.27 \pm 0.32$
He II Narrow	$40.58 \pm 0.20$	$348 \pm 63$	$147 \pm 25$	$1.37 \pm 0.29$
<b>He II Broad</b>	<b><math>41.24 \pm 0.12</math></b>	<b><math>1248 \pm 88</math></b>	<b><math>530 \pm 36</math></b>	<b><math>6.06 \pm 0.55</math></b>
H $\beta$ Narrow	$41.53 \pm 0.09$	$374 \pm 63$	$271 \pm 34$	$13.28 \pm 0.58$
<b>H<math>\beta</math> Broad</b>	<b><math>42.36 \pm 0.04</math></b>	<b><math>3331 \pm 426</math></b>	<b><math>1195 \pm 297</math></b>	<b><math>81.25 \pm 1.11</math></b>
[O III] 5007	$42.49 \pm 0.01$	$374 \pm 63$	$271 \pm 34$	$122.93 \pm 0.69$
He I Narrow	$40.45 \pm 0.21$	$348 \pm 63$	$147 \pm 25$	$1.30 \pm 0.25$
<b>He I Broad</b>	<b><math>41.18 \pm 0.16</math></b>	<b><math>2004 \pm 713</math></b>	<b><math>851 \pm 303</math></b>	<b><math>6.52 \pm 0.64</math></b>
[O I] 6300	$40.89 \pm 0.05$	$348 \pm 63$	$147 \pm 25$	$3.86 \pm 0.25$
H $\alpha$ Narrow	$41.98 \pm 0.02$	$348 \pm 63$	$147 \pm 25$	$50.78 \pm 0.52$
<b>H<math>\alpha</math> Broad</b>	<b><math>42.87 \pm 0.02</math></b>	<b><math>2442 \pm 97</math></b>	<b><math>1157 \pm 161</math></b>	<b><math>384.60 \pm 1.36</math></b>
[N II] 6585	$41.40 \pm 0.04$	$348 \pm 63$	$147 \pm 25$	$13.31 \pm 0.44$
[S II] 6718	$41.27 \pm 0.02$	$348 \pm 63$	$147 \pm 25$	$9.97 \pm 0.32$
[S II] 6732	$41.29 \pm 0.03$	$348 \pm 63$	$147 \pm 25$	$10.49 \pm 0.41$

## Emission Summary

H $\alpha$ broad SNR	31.82
H $\beta$ broad SNR	10.88
H $\gamma$ broad SNR	4.98
AGN frac	0.98
Host frac	0.01
$\log L_{5100, \text{Host}}$	42.28
Fe II/H $\beta$	0.42
Fe II/[O III]	0.28

## Quality Flags

spurious_hab/hbb	0/0
15100	0
balmer	0
balmer_snr	0
hb_width	0
balmer_width	0