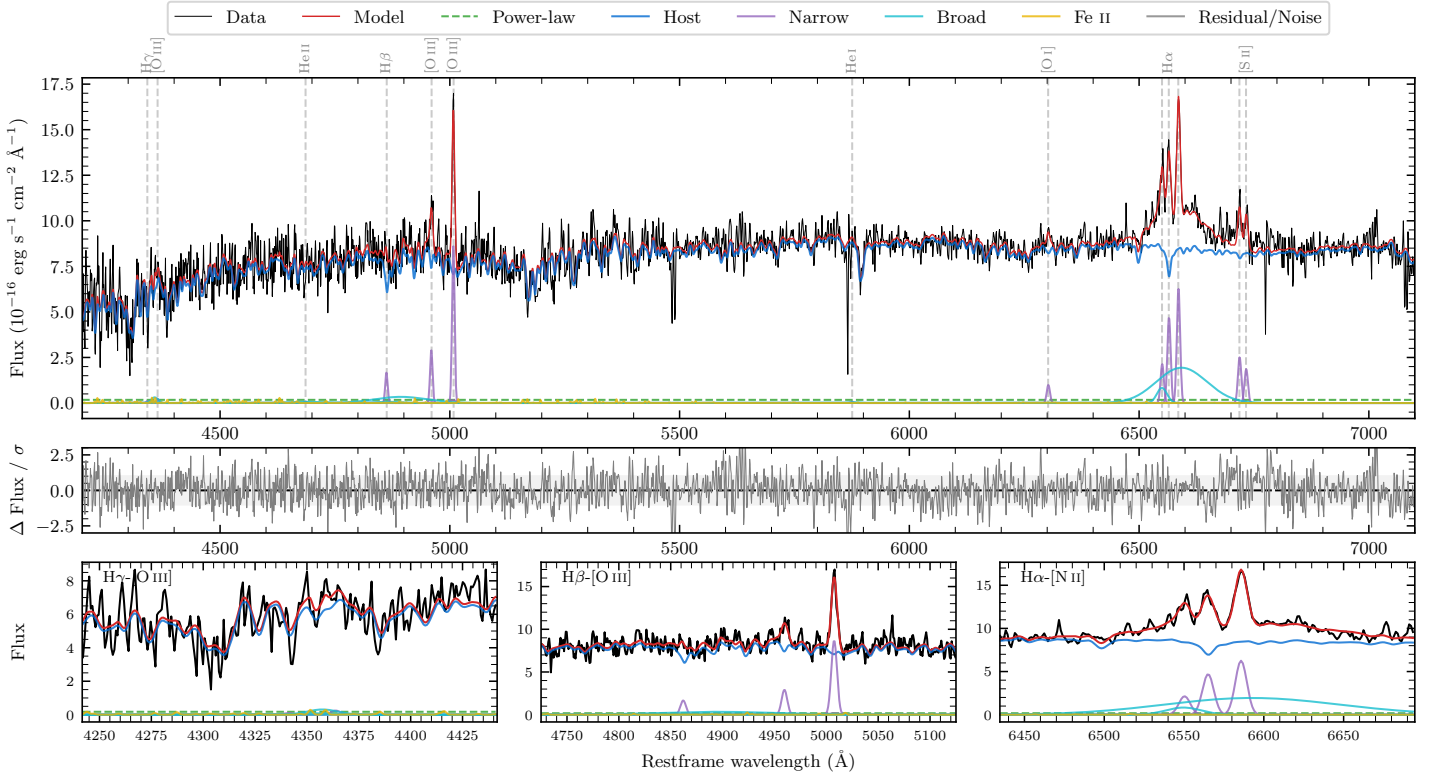
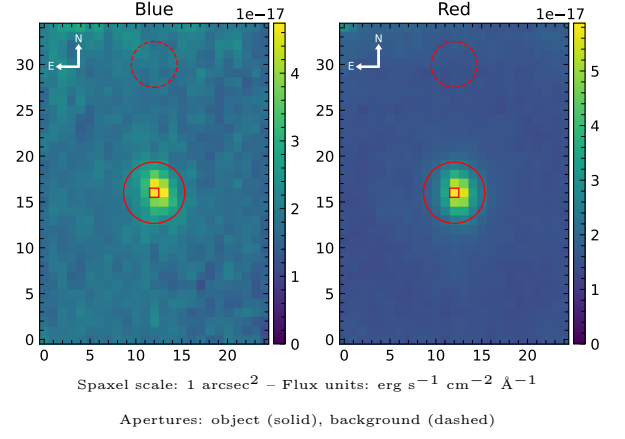


# 6dFGS gJ150541.8–284952

Spectrum ID	113578097_sp1	Spectrum type	Sy 1.5+
Alt name	g1505418–284952	Quality flag	good
$z$	0.0742	AGN reference	6dFGS
RA, Dec	226.4240, –28.8310	MW $E(B - V)$	0.172
MJD	61114.7	Power law $\alpha_\nu$	$-1.99 \pm 0.01$
SNR/ $\text{\AA}$ B/R	9.5/16.8	$\log L_{5100, \text{AGN}}$	$42.08 \pm 0.55$
Obs airmass	1.02	$\log H\beta_{\text{Br}}/[\text{O III}]$	$< 0.17$
SMSS ID	113578097	$\log M_{L5100}/M_\odot$	–
Neighbour	None $< 15''$	$\log M_{\text{H}\alpha}/M_\odot$	$7.74 \pm 0.05$
SMSS $\langle r_6''_{\text{ap}} \rangle$	$16.83 \pm 0.03$	$\log M_{\text{H}\beta}/M_\odot$	–
2MASS $K_{\text{ext}}$	$12.74 \pm 0.12$	$\log M_{[\text{O III}]} / M_\odot$	–



## Emission Line Measurements

Line	$\log L$ (erg s $^{-1}$ )	FWHM (km s $^{-1}$ )	$\sigma$ (km s $^{-1}$ )	EW (Å)
H $\gamma$ Narrow	–	–	–	–
<b>H<math>\gamma</math> Broad</b>	–	–	–	–
[O III] 4364	–	–	–	–
He II Narrow	–	–	–	–
<b>He II Broad</b>	–	–	–	–
H $\beta$ Narrow	$40.23 \pm 0.12$	$394 \pm 63$	$172 \pm 26$	$70.92 \pm 15.51$
<b>H<math>\beta</math> Broad</b>	$< 41.12$	–	–	–
[O III] 5007	$40.96 \pm 0.02$	$394 \pm 63$	$172 \pm 26$	$381.39 \pm 16.82$
He I Narrow	–	–	–	–
<b>He I Broad</b>	–	–	–	–
[O I] 6300	$40.10 \pm 0.11$	$387 \pm 62$	$164 \pm 25$	$53.01 \pm 8.44$
H $\alpha$ Narrow	$40.79 \pm 0.03$	$387 \pm 62$	$164 \pm 25$	$261.40 \pm 9.71$
<b>H<math>\alpha</math> Broad</b>	<b><math>41.62 \pm 0.02</math></b>	<b><math>5433 \pm 267</math></b>	<b><math>2065 \pm 25</math></b>	<b><math>1784.61 \pm 41.76</math></b>
[N II] 6585	$40.91 \pm 0.02$	$387 \pm 62$	$164 \pm 25$	$349.14 \pm 10.03$
[S II] 6718	$40.53 \pm 0.04$	$387 \pm 62$	$164 \pm 25$	$142.92 \pm 10.23$
[S II] 6732	$40.40 \pm 0.06$	$387 \pm 62$	$164 \pm 25$	$106.38 \pm 12.41$

## Emission Summary

H $\alpha$ broad SNR	2.79
H $\beta$ broad SNR	0.52
H $\gamma$ broad SNR	0.00
AGN frac	0.02
Host frac	0.98
$\log L_{5100, \text{Host}}$	43.71
Fe II/H $\beta$	–
Fe II/[O III]	–

## Quality Flags

spurious_hab/hbb	0/0
15100	2
balmer	2
balmer_snr	2
hb_width	2
balmer_width	2