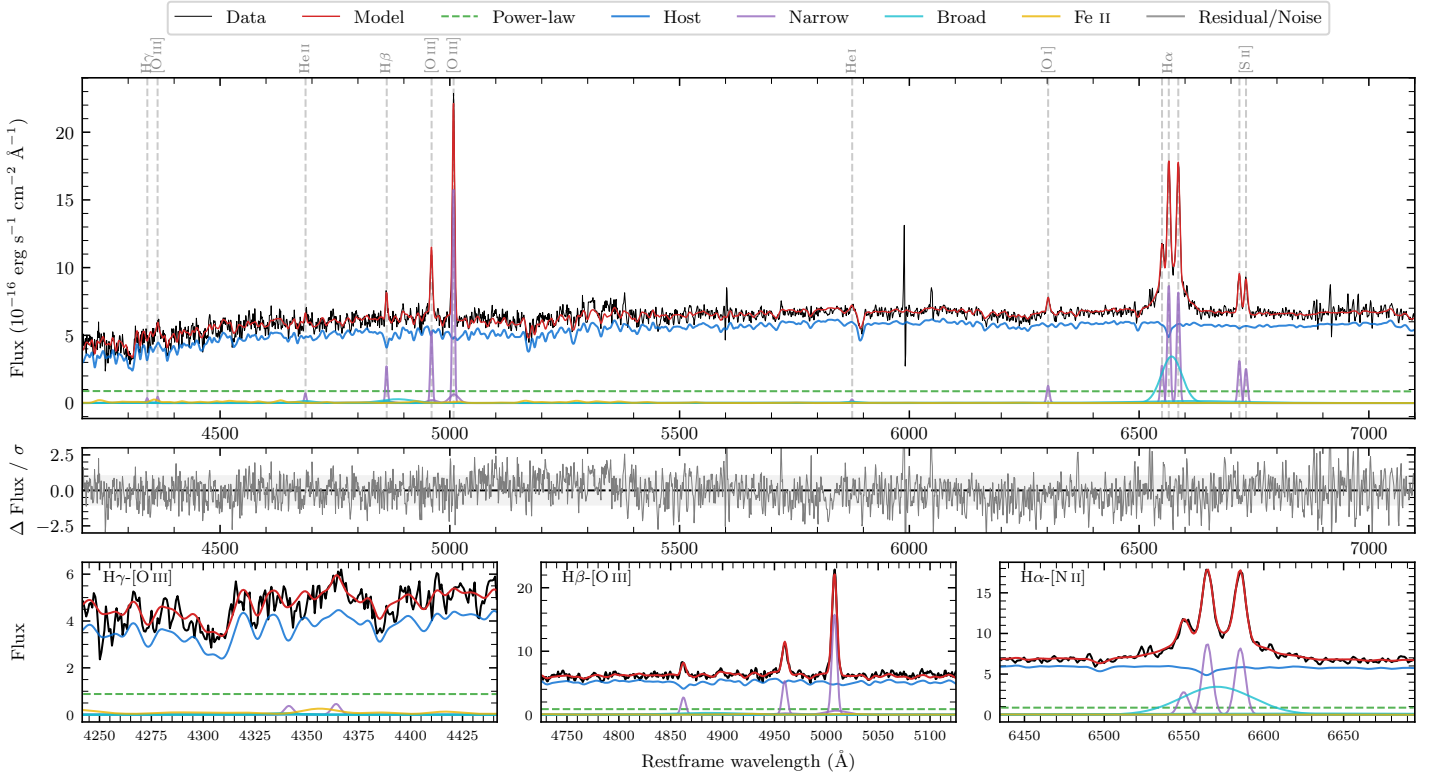
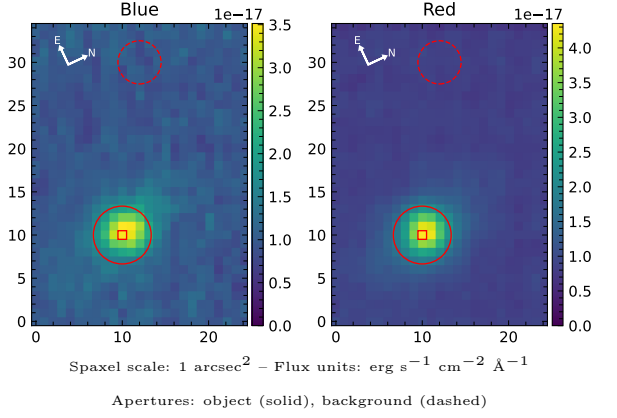


# 2dFGRS TGS158Z166

Spectrum ID	11339821_sp1	Spectrum type	Sy 1.8+
Alt name	g0231241-250511	Quality flag	good
$z$	0.0521	AGN reference	6dFGS
RA, Dec	37.8504, -25.0865	MW $E(B-V)$	0.016
MJD	60178.77	Power law $\alpha_\nu$	$-1.95 \pm 0.04$
SNR/ $\text{\AA}$ B/R	13.8/26.5	$\log L_{5100, \text{AGN}}$	$42.46 \pm 0.06$
Obs airmass	1.01	$\log H\beta_{\text{Br}}/[\text{O III}]$	$< -0.70$
SMSS ID	11339821	$\log M_{L5100}/M_\odot$	—
Neighbour	None $< 15''$	$\log M_{\text{H}\alpha}/M_\odot$	$6.80 \pm 0.04$
SMSS $\langle r_6''_{\text{ap}} \rangle$	$16.36 \pm 0.02$	$\log M_{\text{H}\beta}/M_\odot$	—
2MASS $K_{\text{ext}}$	$12.68 \pm 0.10$	$\log M_{[\text{O III}]} / M_\odot$	—



## Emission Line Measurements

Line	$\log L$ ( $\text{erg s}^{-1}$ )	FWHM ( $\text{km s}^{-1}$ )	$\sigma$ ( $\text{km s}^{-1}$ )	EW ( $\text{\AA}$ )
H $\gamma$ Narrow	$39.20 \pm 0.36$	$353 \pm 63$	$264 \pm 33$	$2.76 \pm 2.44$
<b>H<math>\gamma</math> Broad</b>	—	—	—	—
[O III] 4364	$39.22 \pm 0.29$	$343 \pm 63$	$145 \pm 25$	$2.91 \pm 1.27$
He II Narrow	$39.44 \pm 0.19$	$343 \pm 63$	$145 \pm 25$	$4.89 \pm 1.16$
<b>He II Broad</b>	<b><math>39.70 \pm 0.30</math></b>	<b><math>2881 \pm 63</math></b>	<b><math>1224 \pm 25</math></b>	<b><math>8.84 \pm 3.41</math></b>
H $\beta$ Narrow	$40.10 \pm 0.05$	$353 \pm 63$	$265 \pm 33$	$22.50 \pm 2.23$
<b>H<math>\beta</math> Broad</b>	$< 40.18$	—	—	—
[O III] 5007	$40.88 \pm 0.01$	$353 \pm 63$	$265 \pm 33$	$134.66 \pm 2.44$
He I Narrow	$39.12 \pm 0.25$	$343 \pm 63$	$145 \pm 25$	$2.34 \pm 0.75$
<b>He I Broad</b>	<b><math>39.37 \pm 0.32</math></b>	<b><math>1793 \pm 63</math></b>	<b><math>761 \pm 25</math></b>	<b><math>4.20 \pm 1.72</math></b>
[O I] 6300	$39.82 \pm 0.05$	$343 \pm 63$	$145 \pm 25$	$11.77 \pm 0.77$
H $\alpha$ Narrow	$40.68 \pm 0.01$	$343 \pm 63$	$145 \pm 25$	$84.62 \pm 1.03$
<b>H<math>\alpha</math> Broad</b>	<b><math>41.20 \pm 0.02</math></b>	<b><math>2461 \pm 67</math></b>	<b><math>1154 \pm 105</math></b>	<b><math>285.81 \pm 5.15</math></b>
[N II] 6585	$40.65 \pm 0.01$	$343 \pm 63$	$145 \pm 25$	$79.32 \pm 1.05$
[S II] 6718	$40.23 \pm 0.02$	$343 \pm 63$	$145 \pm 25$	$30.70 \pm 0.83$
[S II] 6732	$40.15 \pm 0.02$	$343 \pm 63$	$145 \pm 25$	$25.14 \pm 0.86$

## Emission Summary

H $\alpha$ broad SNR	8.29
H $\beta$ broad SNR	0.90
H $\gamma$ broad SNR	0.00
AGN frac	0.15
Host frac	0.85
$\log L_{5100, \text{Host}}$	43.21
Fe II/H $\beta$	—
Fe II/[O III]	0.29

## Quality Flags

spurious_hab/hbb	0/0
15100	2
balmer	2
balmer_snr	2
hb_width	2
balmer_width	2