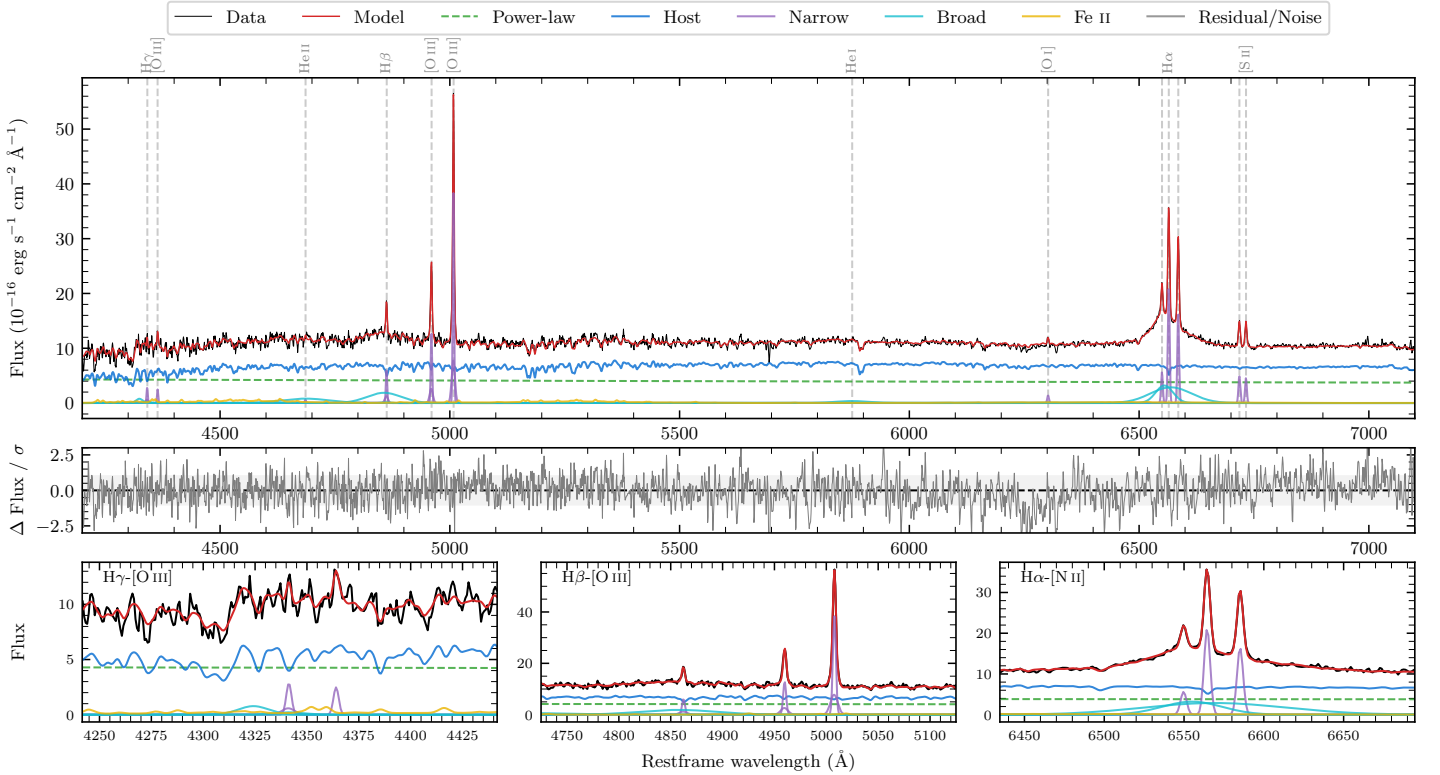
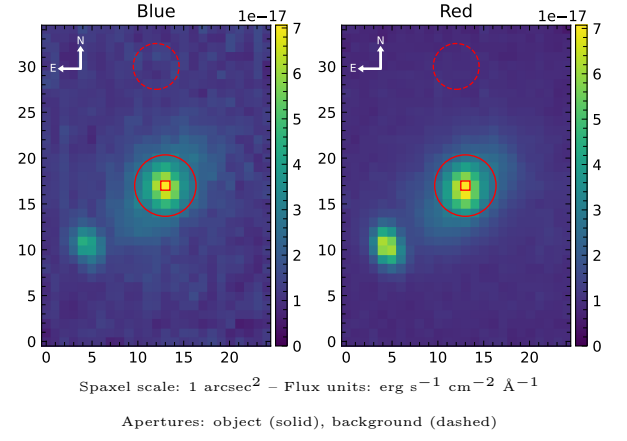


# 1RXS J025930.7–242249

Spectrum ID	11327597_sp1	Spectrum type	Sy 1.5
Alt name	g0259305–242254	Quality flag	good
$z$	0.0354	AGN reference	6dFGS
RA, Dec	44.8771, –24.3816	MW $E(B - V)$	0.020
MJD	60223.63	Power law $\alpha_\nu$	$-1.73 \pm 0.04$
SNR/ $\text{\AA}$ B/R	18.8/35.0	$\log L_{5100, \text{AGN}}$	$42.78 \pm 0.01$
Obs airmass	1.03	$\log H\beta_{\text{Br}}/[\text{O III}]$	$-0.07 \pm 0.03$
SMSS ID	11327597	$\log M_{L5100}/M_\odot$	$7.81 \pm 0.05$
Neighbour	10.2", 11327590	$\log M_{\text{H}\alpha}/M_\odot$	$6.93 \pm 0.04$
SMSS $\langle r_6 \rangle_{\text{ap}}$	$15.88 \pm 0.03$	$\log M_{\text{H}\beta}/M_\odot$	$7.69 \pm 0.07$
2MASS $K_{\text{ext}}$	nan $\pm$ nan	$\log M_{[\text{O III}]} / M_\odot$	$7.84 \pm 0.06$



## Emission Line Measurements

Line	$\log L$ (erg s <sup>-1</sup> )	FWHM (km s <sup>-1</sup> )	$\sigma$ (km s <sup>-1</sup> )	EW (Å)
H $\gamma$ Narrow	$39.61 \pm 0.08$	$232 \pm 63$	$142 \pm 25$	$3.29 \pm 0.44$
<b>H<math>\gamma</math> Broad</b>	<b><math>39.77 \pm 0.13</math></b>	<b><math>1378 \pm 278</math></b>	<b><math>577 \pm 75</math></b>	<b><math>4.43 \pm 0.79</math></b>
[O III] 4364	$39.38 \pm 0.10$	$210 \pm 62$	$87 \pm 25$	$1.92 \pm 0.28$
He II Narrow	$38.83 \pm 0.29$	$210 \pm 62$	$87 \pm 25$	$0.56 \pm 0.26$
<b>He II Broad</b>	<b><math>40.49 \pm 0.05</math></b>	<b><math>7746 \pm 118</math></b>	<b><math>3289 \pm 49</math></b>	<b><math>25.76 \pm 1.61</math></b>
H $\beta$ Narrow	$39.99 \pm 0.03$	$232 \pm 63$	$142 \pm 25$	$8.12 \pm 0.37$
<b>H<math>\beta</math> Broad</b>	<b><math>40.73 \pm 0.02</math></b>	<b><math>5156 \pm 275</math></b>	<b><math>1970 \pm 61</math></b>	<b><math>44.19 \pm 1.33</math></b>
[O III] 5007	$40.80 \pm 0.01$	$232 \pm 63$	$142 \pm 25$	$53.00 \pm 0.42$
He I Narrow	–	–	–	–
<b>He I Broad</b>	<b><math>39.99 \pm 0.07</math></b>	<b><math>4284 \pm 147</math></b>	<b><math>1819 \pm 62</math></b>	<b><math>8.59 \pm 0.79</math></b>
[O I] 6300	$39.29 \pm 0.06$	$210 \pm 62$	$87 \pm 25$	$1.73 \pm 0.16$
H $\alpha$ Narrow	$40.49 \pm 0.01$	$210 \pm 62$	$87 \pm 25$	$27.57 \pm 0.21$
<b>H<math>\alpha</math> Broad</b>	<b><math>41.15 \pm 0.01</math></b>	<b><math>2954 \pm 90</math></b>	<b><math>1430 \pm 27</math></b>	<b><math>128.47 \pm 0.89</math></b>
[N II] 6585	$40.38 \pm 0.01$	$210 \pm 62$	$87 \pm 25$	$21.52 \pm 0.20$
[S II] 6718	$39.87 \pm 0.02$	$210 \pm 62$	$87 \pm 25$	$6.65 \pm 0.19$
[S II] 6732	$39.83 \pm 0.02$	$210 \pm 62$	$87 \pm 25$	$6.14 \pm 0.19$

## Emission Summary

H $\alpha$ broad SNR	10.22
H $\beta$ broad SNR	3.47
H $\gamma$ broad SNR	1.41
AGN frac	0.40
Host frac	0.60
$\log L_{5100, \text{Host}}$	42.96
Fe II/H $\beta$	0.69
Fe II/[O III]	0.58

## Quality Flags

spurious_hab/hbb	0/0
15100	1
balmer	0
balmer_snr	1
hb_width	0
balmer_width	0