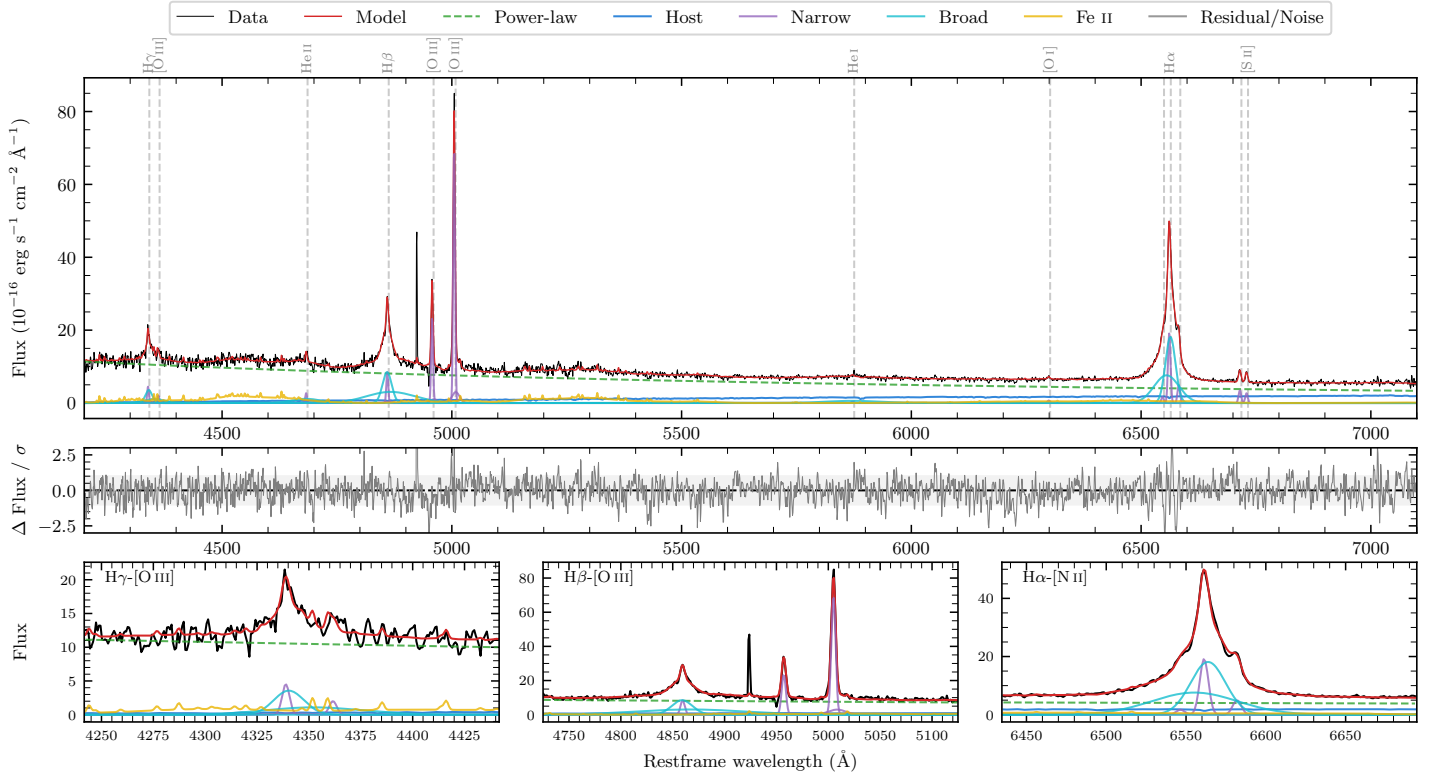
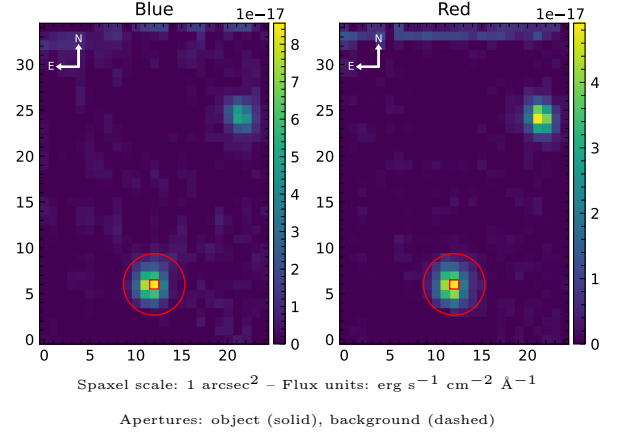


# 2MASS J15155929–3602337

Spectrum ID	112952110_sp1	Spectrum type	Sy 1.5
Alt name	6199896346751788160	Quality flag	good
$z$	0.0731	AGN reference	<a href="#">AllBRICS2</a>
RA, Dec	228.9971, -36.0427	MW $E(B - V)$	0.129
MJD	60843.53	Power law $\alpha_\nu$	$0.33 \pm 0.09$
SNR/ $\text{\AA}$ B/R	10.1/12.5	$\log L_{5100, \text{AGN}}$	$43.68 \pm 0.01$
Obs airmass	1.03	$\log H\beta_{\text{Br}}/[\text{O III}]$	$0.16 \pm 0.02$
SMSS ID	<a href="#">112952110</a>	$\log M_{L5100}/M_\odot$	$7.29 \pm 0.05$
Neighbour	None $< 15''$	$\log M_{\text{H}\alpha}/M_\odot$	$6.92 \pm 0.04$
SMSS $\langle r_6''_{\text{ap}} \rangle$	$16.43 \pm 0.07$	$\log M_{\text{H}\beta}/M_\odot$	$7.32 \pm 0.05$
2MASS $K_{\text{ext}}$	nan $\pm$ nan	$\log M_{[\text{O III}]} / M_\odot$	$7.41 \pm 0.04$



## Emission Line Measurements

Line	$\log L$ ( $\text{erg s}^{-1}$ )	FWHM ( $\text{km s}^{-1}$ )	$\sigma$ ( $\text{km s}^{-1}$ )	EW ( $\text{\AA}$ )
H $\gamma$ Narrow	$40.52 \pm 0.11$	$305 \pm 63$	$235 \pm 30$	$2.42 \pm 0.55$
<b>H<math>\gamma</math> Broad</b>	<b><math>41.25 \pm 0.06</math></b>	<b><math>1399 \pm 132</math></b>	<b><math>821 \pm 102</math></b>	<b><math>13.00 \pm 0.93</math></b>
[O III] 4364	$40.10 \pm 0.19$	$296 \pm 63$	$124 \pm 25$	$0.94 \pm 0.25$
He II Narrow	$40.27 \pm 0.09$	$296 \pm 63$	$124 \pm 25$	$1.61 \pm 0.22$
<b>He II Broad</b>	<b><math>41.10 \pm 0.07</math></b>	<b><math>4695 \pm 366</math></b>	<b><math>1994 \pm 155</math></b>	<b><math>11.00 \pm 1.09</math></b>
H $\beta$ Narrow	$40.84 \pm 0.05$	$305 \pm 63$	$235 \pm 30$	$6.62 \pm 0.57$
<b>H<math>\beta</math> Broad</b>	<b><math>41.94 \pm 0.01</math></b>	<b><math>1823 \pm 92</math></b>	<b><math>1890 \pm 57</math></b>	<b><math>81.80 \pm 1.57</math></b>
[O III] 5007	$41.77 \pm 0.01$	$305 \pm 63$	$235 \pm 30$	$59.94 \pm 0.68$
He I Narrow	$39.54 \pm 0.32$	$296 \pm 63$	$124 \pm 25$	$0.51 \pm 0.30$
<b>He I Broad</b>	<b><math>41.09 \pm 0.06</math></b>	<b><math>6903 \pm 250</math></b>	<b><math>2931 \pm 106</math></b>	<b><math>18.13 \pm 1.21</math></b>
[O I] 6300	$39.81 \pm 0.16$	$296 \pm 63$	$124 \pm 25$	$1.11 \pm 0.27$
H $\alpha$ Narrow	$41.26 \pm 0.01$	$296 \pm 63$	$124 \pm 25$	$34.82 \pm 0.46$
<b>H<math>\alpha</math> Broad</b>	<b><math>42.15 \pm 0.01</math></b>	<b><math>1447 \pm 64</math></b>	<b><math>688 \pm 25</math></b>	<b><math>270.18 \pm 2.14</math></b>
[N II] 6585	$40.68 \pm 0.03$	$296 \pm 63$	$124 \pm 25$	$9.10 \pm 0.39$
[S II] 6718	$40.53 \pm 0.04$	$296 \pm 63$	$124 \pm 25$	$6.79 \pm 0.38$
[S II] 6732	$40.42 \pm 0.04$	$296 \pm 63$	$124 \pm 25$	$5.32 \pm 0.36$

## Emission Summary

H $\alpha$ broad SNR	26.01
H $\beta$ broad SNR	11.80
H $\gamma$ broad SNR	4.62
AGN frac	0.89
Host frac	0.11
$\log L_{5100, \text{Host}}$	42.78
Fe II/H $\beta$	0.75
Fe II/[O III]	1.10

## Quality Flags

spurious_hab/hbb	0/0
15100	0
balmer	0
balmer_snr	0
hb_width	2
balmer_width	0