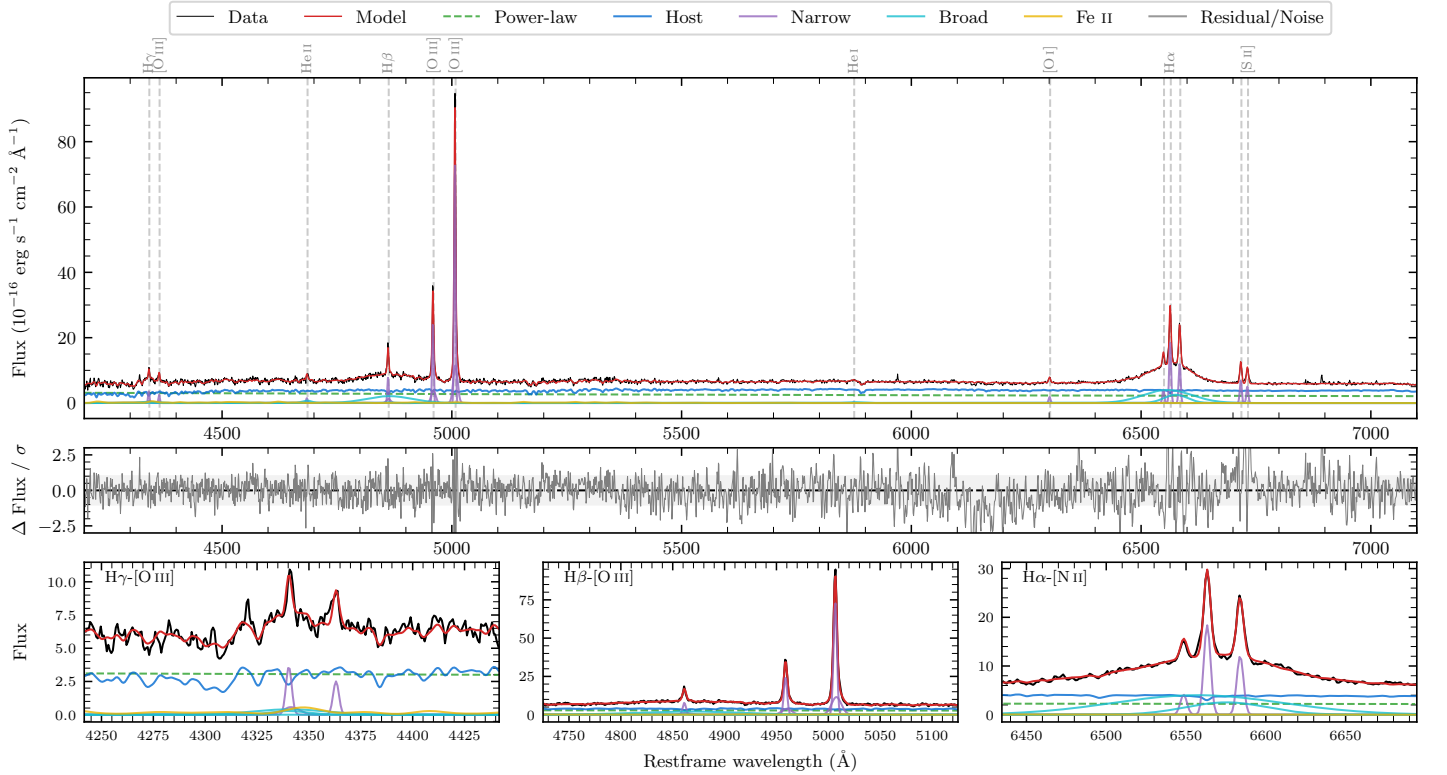
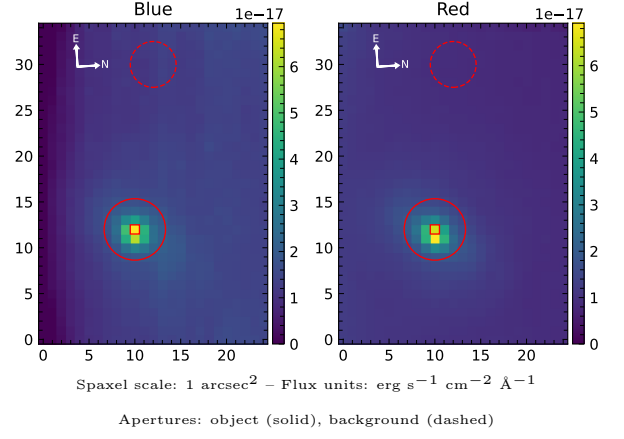


LEDA 1050619

Spectrum ID	110399311_sp1	Spectrum type	Sy 1.5
Alt name	g1423582-050009	Quality flag	good
z	0.0557	AGN reference	6dFGS
RA, Dec	215.9924, -5.0024	MW $E(B - V)$	0.050
MJD	59726.55	Power law α_ν	-1.24 ± 0.08
SNR/ \AA B/R	11.7/24.3	$\log L_{5100, \text{AGN}}$	43.01 ± 0.02
Obs airmass	1.15	$\log H\beta_{\text{Br}}/[\text{O III}]$	-0.21 ± 0.02
SMSS ID	110399311	$\log M_{L5100}/M_\odot$	8.12 ± 0.06
Neighbour	None $< 15''$	$\log M_{H\alpha}/M_\odot$	7.62 ± 0.02
SMSS $\langle r_6''_{\text{ap}} \rangle$	16.75 ± 0.05	$\log M_{H\beta}/M_\odot$	8.17 ± 0.07
2MASS K_{ext}	12.75 ± 0.11	$\log M_{[\text{O III}]} / M_\odot$	8.42 ± 0.06



Emission Line Measurements

Line	$\log L$ (erg s^{-1})	FWHM (km s^{-1})	σ (km s^{-1})	EW (\AA)
H γ Narrow	40.16 ± 0.07	251 ± 62	179 ± 25	6.34 ± 0.74
Hγ Broad	40.31 ± 0.15	2143 ± 490	886 ± 108	8.22 ± 1.54
[O III] 4364	39.84 ± 0.10	230 ± 62	96 ± 25	3.05 ± 0.44
He II Narrow	39.65 ± 0.15	230 ± 62	96 ± 25	2.10 ± 0.39
He II Broad	40.19 ± 0.12	1554 ± 80	660 ± 33	7.10 ± 1.02
H β Narrow	40.54 ± 0.03	251 ± 62	179 ± 25	16.71 ± 0.69
Hβ Broad	41.32 ± 0.02	6651 ± 442	2616 ± 48	99.86 ± 2.28
[O III] 5007	41.53 ± 0.01	251 ± 62	179 ± 25	165.89 ± 0.74
He I Narrow	38.98 ± 0.30	230 ± 62	96 ± 25	0.53 ± 0.22
He I Broad	39.95 ± 0.11	1895 ± 78	804 ± 32	4.78 ± 0.67
[O I] 6300	39.85 ± 0.04	230 ± 62	96 ± 25	4.18 ± 0.24
H α Narrow	40.88 ± 0.01	230 ± 62	96 ± 25	45.80 ± 0.33
Hα Broad	41.74 ± 0.01	4352 ± 94	1851 ± 25	328.54 ± 1.41
[N II] 6585	40.70 ± 0.01	230 ± 62	96 ± 25	30.22 ± 0.31
[S II] 6718	40.46 ± 0.01	230 ± 62	96 ± 25	17.88 ± 0.27
[S II] 6732	40.33 ± 0.01	230 ± 62	96 ± 25	13.15 ± 0.26

Emission Summary

H α broad SNR	11.56
H β broad SNR	4.25
H γ broad SNR	1.37
AGN frac	0.43
Host frac	0.57
$\log L_{5100, \text{Host}}$	43.13
Fe II/H β	0.24
Fe II/[O III]	0.15

Quality Flags

spurious_hab/hbb	0/0
15100	1
balmer	0
balmer_snr	1
hb_width	0
balmer_width	0