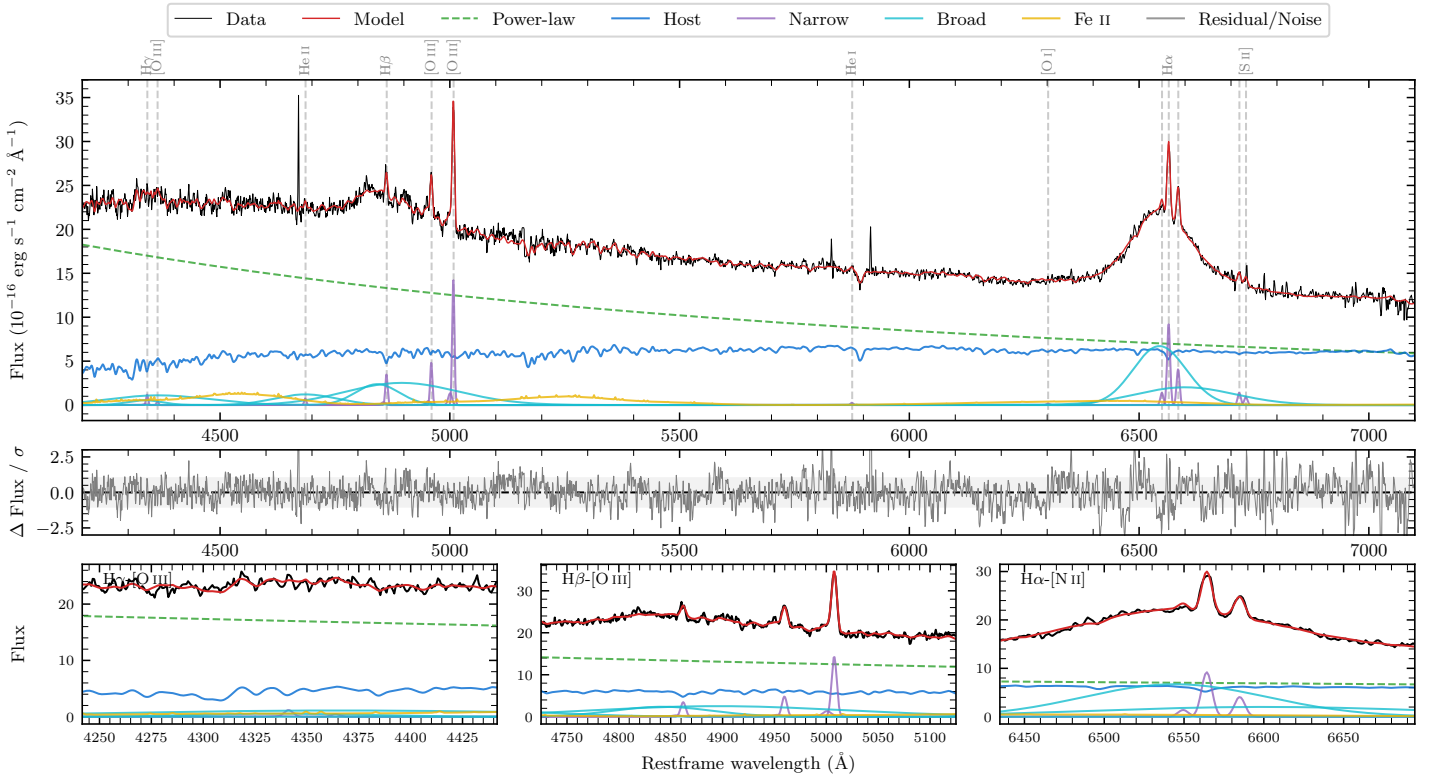
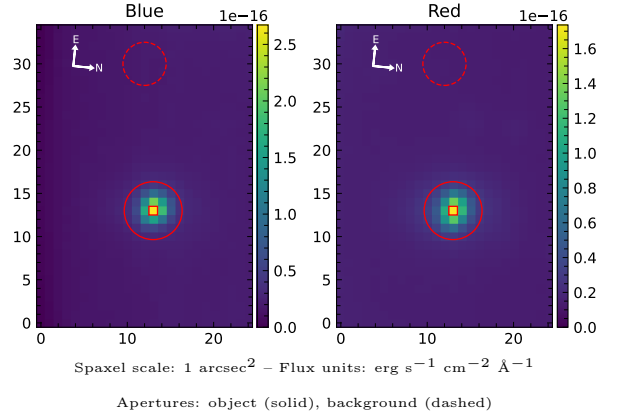


# LEDA 3082455

Spectrum ID	110386023_sp1	Spectrum type	Sy 1.2
Alt name	g1421022-052239	Quality flag	good
$z$	0.0802	AGN reference	6dFGS
RA, Dec	215.2589, -5.3775	MW $E(B - V)$	0.038
MJD	59434.39	Power law $\alpha_\nu$	$0.16 \pm 0.07$
SNR/ $\text{\AA}$ B/R	29.7/41.8	$\log L_{5100, \text{AGN}}$	$43.99 \pm 0.01$
Obs airmass	1.30	$\log H\beta_{\text{Br}}/[\text{O III}]$	$0.43 \pm 0.31$
SMSS ID	110386023	$\log M_{L5100}/M_\odot$	$8.57 \pm 0.01$
Neighbour	6.9", 2178208142	$\log M_{H\alpha}/M_\odot$	$8.46 \pm 0.02$
SMSS $\langle r_{6'' \text{ap}} \rangle$	$15.92 \pm 0.06$	$\log M_{H\beta}/M_\odot$	$8.36 \pm 0.14$
2MASS $K_{\text{ext}}$	$12.54 \pm 0.08$	$\log M_{[\text{O III}]} / M_\odot$	$8.31 \pm 0.02$



## Emission Line Measurements

Line	$\log L$ (erg s <sup>-1</sup> )	FWHM (km s <sup>-1</sup> )	$\sigma$ (km s <sup>-1</sup> )	EW (Å)
H $\gamma$ Narrow	$40.11 \pm 0.20$	$368 \pm 63$	$217 \pm 29$	$0.48 \pm 0.15$
<b>H<math>\gamma</math> Broad</b>	<b><math>41.79 \pm 0.05</math></b>	<b><math>12989 \pm 2132</math></b>	<b><math>5856 \pm 187</math></b>	<b><math>22.88 \pm 0.86</math></b>
[O III] 4364	$39.62 \pm 0.39$	$355 \pm 63$	$150 \pm 25$	$0.16 \pm 0.11$
He II Narrow	$39.88 \pm 0.25$	$355 \pm 63$	$150 \pm 25$	$0.33 \pm 0.12$
<b>He II Broad</b>	—	—	—	—
H $\beta$ Narrow	$40.62 \pm 0.06$	$368 \pm 63$	$217 \pm 29$	$1.98 \pm 0.17$
<b>H<math>\beta</math> Broad</b>	<b><math>41.69^{+0.57}_{-0.03}</math></b>	<b><math>6874 \pm 81</math></b>	<b><math>2501 \pm 35</math></b>	<b><math>22.64 \pm 0.62</math></b>
[O III] 5007	$41.25 \pm 0.02$	$368 \pm 63$	$217 \pm 29$	$9.01 \pm 0.20$
He I Narrow	$39.52 \pm 0.29$	$355 \pm 63$	$150 \pm 25$	$0.24 \pm 0.10$
<b>He I Broad</b>	—	—	—	—
[O I] 6300	$39.35 \pm 0.34$	$355 \pm 63$	$150 \pm 25$	$0.18 \pm 0.11$
H $\alpha$ Narrow	$41.11 \pm 0.01$	$355 \pm 63$	$150 \pm 25$	$11.72 \pm 0.15$
<b>H<math>\alpha</math> Broad</b>	<b><math>42.42 \pm 0.01</math></b>	<b><math>7051 \pm 79</math></b>	<b><math>3026 \pm 32</math></b>	<b><math>235.48 \pm 1.04</math></b>
[N II] 6585	$40.76 \pm 0.02$	$355 \pm 63$	$150 \pm 25$	$5.26 \pm 0.15$
[S II] 6718	$40.31 \pm 0.06$	$355 \pm 63$	$150 \pm 25$	$1.92 \pm 0.18$
[S II] 6732	$40.13 \pm 0.09$	$355 \pm 63$	$150 \pm 25$	$1.29 \pm 0.18$

## Emission Summary

H $\alpha$ broad SNR	12.87
H $\beta$ broad SNR	3.60
H $\gamma$ broad SNR	2.45
AGN frac	0.68
Host frac	0.32
$\log L_{5100, \text{Host}}$	43.66
Fe II/H $\beta$	—
Fe II/[O III]	—

## Quality Flags

spurious_hab/hbb	0/1
15100	0
balmer	0
balmer_snr	1
hb_width	0
balmer_width	1