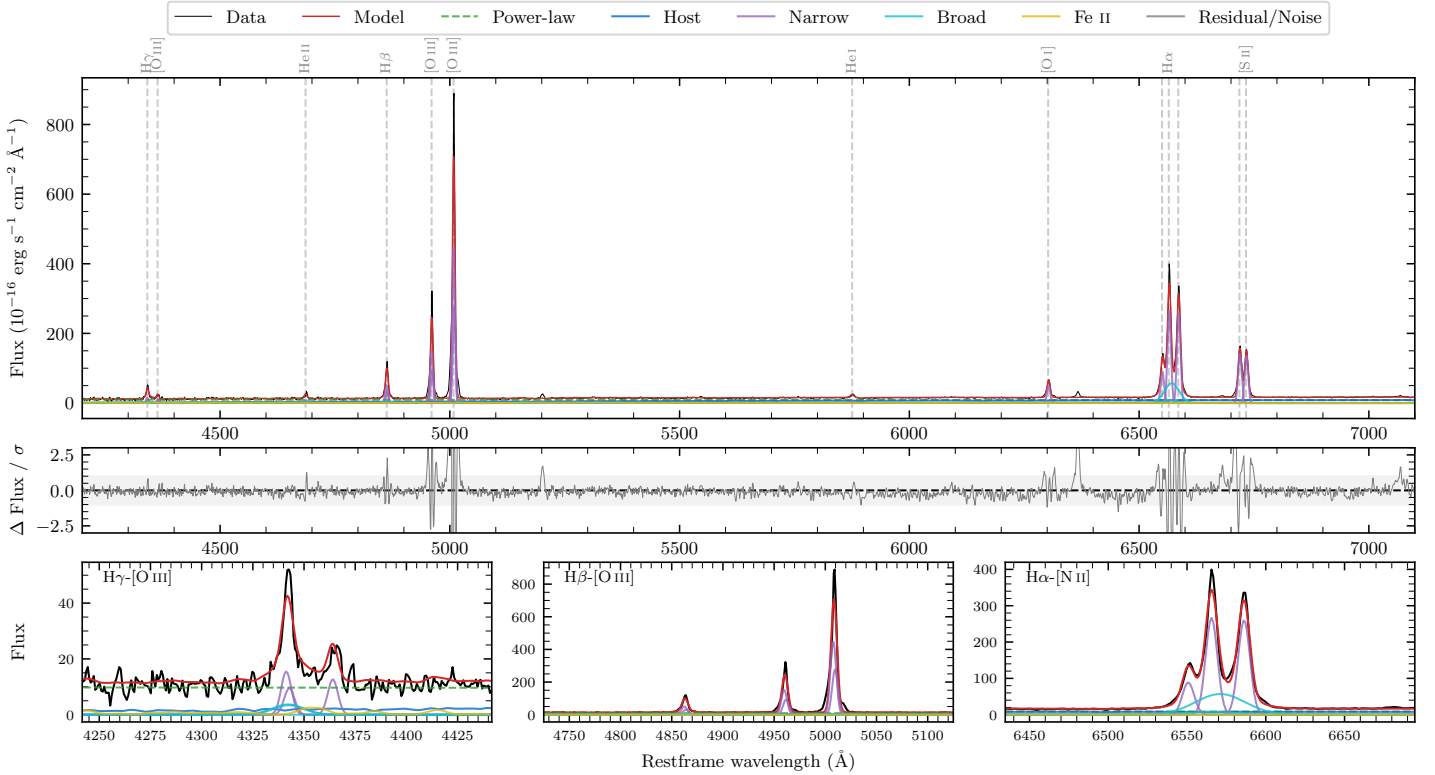
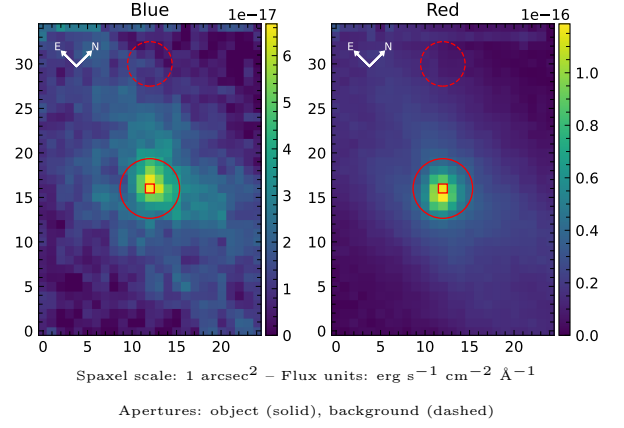


NGC 5506

Spectrum ID	110376666_sp1	Spectrum type	Sy 2
Alt name	NGC 5506	Quality flag	good
z	0.0059	AGN reference	S7
RA, Dec	213.3120, -3.2077	MW $E(B - V)$	0.051
MJD	61095.74	Power law α_ν	-1.73 ± 0.25
SNR/ \AA B/R	1.7/4.6	$\log L_{5100, \text{AGN}}$	41.58 ± 0.06
Obs airmass	1.13	$\log H\beta_{\text{Br}}/[\text{O III}]$	—
SMSS ID	110376666	$\log M_{L5100}/M_\odot$	—
Neighbour	1.2", 2178197101	$\log M_{\text{H}\alpha}/M_\odot$	—
SMSS $\langle r_6''_{\text{ap}} \rangle$	nan \pm nan	$\log M_{\text{H}\beta}/M_\odot$	—
2MASS K_{ext}	8.19 ± 0.02	$\log M_{[\text{O III}]} / M_\odot$	—



Emission Line Measurements

Line	$\log L$ (erg s^{-1})	FWHM (km s^{-1})	σ (km s^{-1})	EW (\AA)
H γ Narrow	39.12 ± 0.18	424 ± 63	179 ± 25	16.17 ± 2.83
Hγ Broad	—	—	—	—
[O III] 4364	38.80 ± 0.23	403 ± 63	170 ± 25	8.19 ± 2.61
He II Narrow	38.71 ± 0.27	403 ± 63	170 ± 25	6.73 ± 1.98
He II Broad	38.75 ± 0.38	1223 ± 66	519 ± 26	7.29 ± 3.41
H β Narrow	39.68 ± 0.04	424 ± 63	179 ± 25	61.64 ± 2.15
Hβ Broad	—	—	—	—
[O III] 5007	40.62 ± 0.01	424 ± 63	179 ± 25	563.00 ± 2.77
He I Narrow	38.68 ± 0.25	403 ± 63	170 ± 25	6.73 ± 2.00
He I Broad	—	—	—	—
[O I] 6300	39.56 ± 0.02	403 ± 63	170 ± 25	51.62 ± 1.28
H α Narrow	40.46 ± 0.01	403 ± 63	170 ± 25	289.13 ± 2.03
Hα Broad	—	—	—	—
[N II] 6585	40.45 ± 0.01	403 ± 63	170 ± 25	283.76 ± 1.90
[S II] 6718	40.04 ± 0.01	403 ± 63	170 ± 25	159.23 ± 1.61
[S II] 6732	40.02 ± 0.01	403 ± 63	170 ± 25	151.45 ± 1.64

Emission Summary

H α broad SNR	0.00
H β broad SNR	0.00
H γ broad SNR	0.00
AGN frac	0.71
Host frac	0.29
$\log L_{5100, \text{Host}}$	41.19
Fe II/H β	—
Fe II/[O III]	0.05

Quality Flags

spurious_hab/hbb	1/0
15100	0
balmer	2
balmer_snr	2
hb_width	2
balmer_width	2