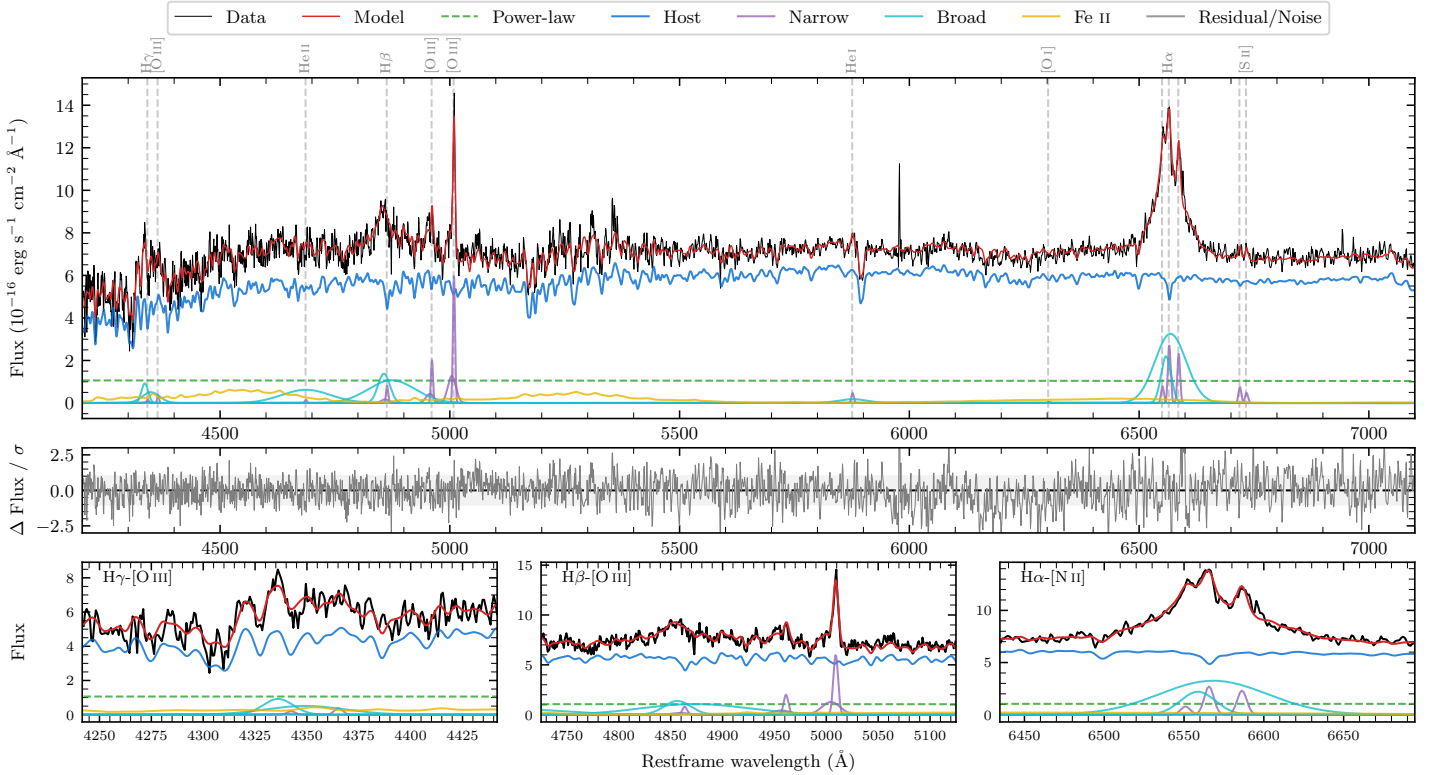
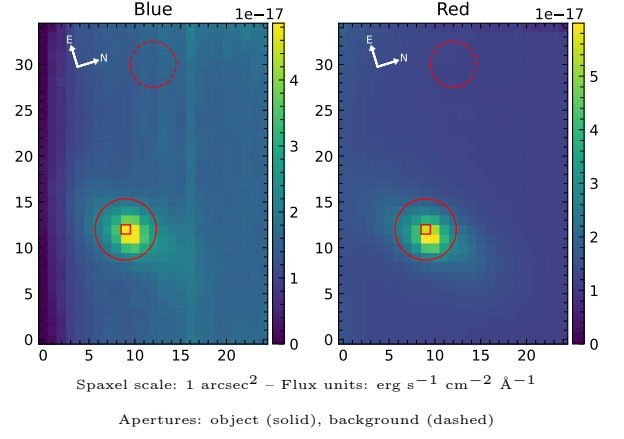


LEDA 126151

Spectrum ID	110289360_sp1	Spectrum type	Sy 1.2
Alt name	g1405149-025901	Quality flag	good
z	0.0540	AGN reference	6dFGS
RA, Dec	211.3119, -2.9837	MW $E(B - V)$	0.067
MJD	59668.67	Power law α_ν	-1.95 ± 0.04
SNR/ \AA B/R	13.5/30.0	$\log L_{5100, \text{AGN}}$	42.57 ± 0.13
Obs airmass	1.14	$\log H\beta_{\text{Br}}/[\text{O III}]$	0.47 ± 0.04
SMSS ID	110289360	$\log M_{L5100}/M_\odot$	7.23 ± 0.13
Neighbour	None $< 15''$	$\log M_{\text{H}\alpha}/M_\odot$	6.87 ± 0.05
SMSS $\langle r_6''_{\text{ap}} \rangle$	16.51 ± 0.02	$\log M_{\text{H}\beta}/M_\odot$	7.37 ± 0.12
2MASS K_{ext}	12.52 ± 0.11	$\log M_{[\text{O III}]} / M_\odot$	7.28 ± 0.12



Emission Line Measurements

Line	$\log L$ (erg s ⁻¹)	FWHM (km s ⁻¹)	σ (km s ⁻¹)	EW (Å)
H γ Narrow	–	–	–	–
Hγ Broad	40.48 ± 0.09	1592 ± 346	915 ± 84	40.95 ± 4.18
[O III] 4364	39.14 ± 0.38	324 ± 63	137 ± 25	1.88 ± 1.28
He II Narrow	–	–	–	–
He II Broad	40.78 ± 0.05	7978 ± 84	3388 ± 34	82.61 ± 5.95
H β Narrow	39.78 ± 0.19	367 ± 64	391 ± 33	8.27 ± 2.18
Hβ Broad	41.12 ± 0.02	2937 ± 363	2217 ± 62	181.87 ± 5.60
[O III] 5007	40.66 ± 0.02	367 ± 64	391 ± 33	62.78 ± 2.25
He I Narrow	39.36 ± 0.14	324 ± 63	137 ± 25	3.18 ± 0.56
He I Broad	40.01 ± 0.11	3672 ± 71	1559 ± 29	14.16 ± 1.99
[O I] 6300	–	–	–	–
H α Narrow	40.17 ± 0.04	324 ± 63	137 ± 25	20.62 ± 0.72
Hα Broad	41.39 ± 0.01	2348 ± 106	1174 ± 25	341.03 ± 2.32
[N II] 6585	40.10 ± 0.04	324 ± 63	137 ± 25	17.65 ± 0.70
[S II] 6718	39.63 ± 0.07	324 ± 63	137 ± 25	5.91 ± 0.66
[S II] 6732	39.43 ± 0.12	324 ± 63	137 ± 25	3.77 ± 0.67

Emission Summary

H α broad SNR	11.08
H β broad SNR	4.97
H γ broad SNR	2.78
AGN frac	0.16
Host frac	0.84
$\log L_{5100, \text{Host}}$	43.28
Fe II/H β	0.81
Fe II/[O III]	2.35

Quality Flags

spurious_hab/hbb	0/0
15100	2
balmer	0
balmer_snr	1
hb_width	2
balmer_width	0