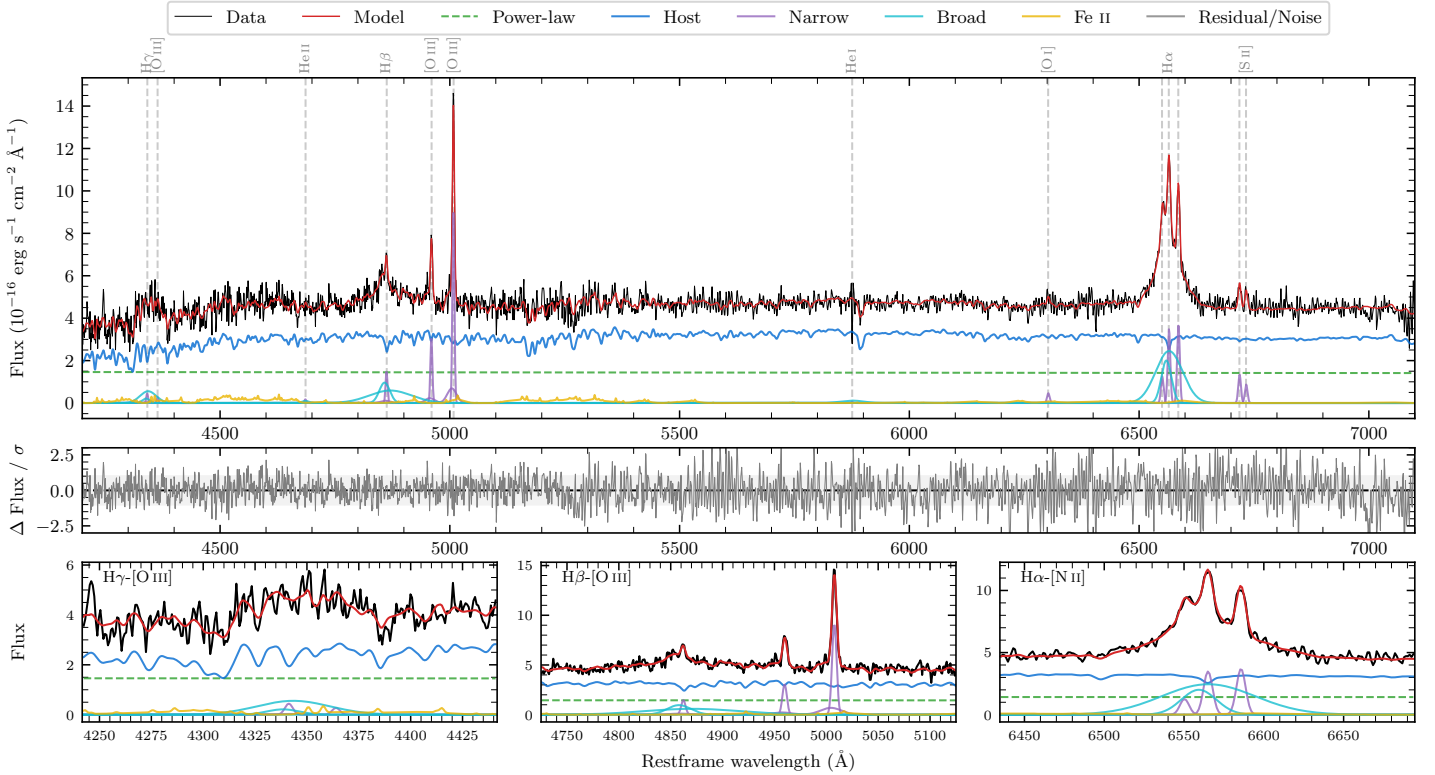
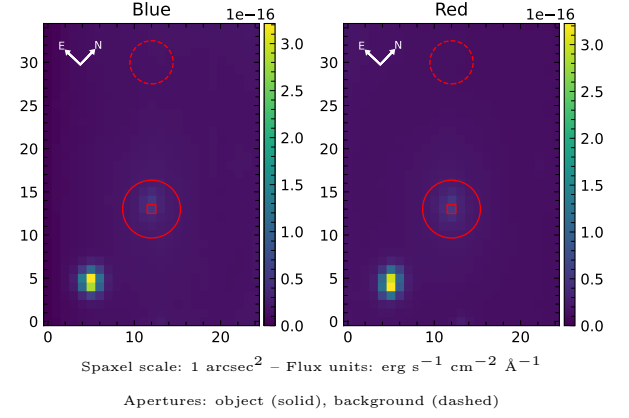


# 6dFGS gJ140925.4–062547

Spectrum ID	110033878_sp2	Spectrum type	Sy 1.5
Alt name	g1409254–062547	Quality flag	good
$z$	0.0725	AGN reference	6dFGS
RA, Dec	212.3560, –6.4297	MW $E(B - V)$	0.028
MJD	59671.62	Power law $\alpha_\nu$	$-1.94 \pm 0.05$
SNR/ $\text{\AA}$ B/R	10.1/20.5	$\log L_{5100, \text{AGN}}$	$42.98 \pm 0.03$
Obs airmass	1.12	$\log H\beta_{\text{Br}}/[\text{O III}]$	$0.15 \pm 0.04$
SMSS ID	110033878	$\log M_{L5100}/M_\odot$	$7.21 \pm 0.11$
Neighbour	6.5", 110033879	$\log M_{\text{H}\alpha}/M_\odot$	$6.79 \pm 0.05$
SMSS $\langle r_{6''}^{\text{ap}} \rangle$	$16.88 \pm 0.06$	$\log M_{\text{H}\beta}/M_\odot$	$7.18 \pm 0.11$
2MASS $K_{\text{ext}}$	$12.77 \pm 0.17$	$\log M_{[\text{O III}]} / M_\odot$	$7.24 \pm 0.11$



## Emission Line Measurements

Line	$\log L$ (erg s <sup>-1</sup> )	FWHM (km s <sup>-1</sup> )	$\sigma$ (km s <sup>-1</sup> )	EW (Å)
H $\gamma$ Narrow	$39.59 \pm 0.35$	$328 \pm 63$	$336 \pm 38$	$2.09 \pm 1.64$
<b>H<math>\gamma</math> Broad</b>	<b><math>40.61 \pm 0.10</math></b>	<b><math>2327 \pm 423</math></b>	<b><math>955 \pm 65</math></b>	<b><math>21.02 \pm 2.53</math></b>
[O III] 4364	$39.25 \pm 0.43$	$312 \pm 63$	$131 \pm 25$	$0.95 \pm 0.79$
He II Narrow	–	–	–	–
<b>He II Broad</b>	<b><math>39.45 \pm 0.45</math></b>	<b><math>1184 \pm 63</math></b>	<b><math>502 \pm 25</math></b>	<b><math>1.48 \pm 1.38</math></b>
H $\beta$ Narrow	$40.16 \pm 0.11$	$328 \pm 63$	$336 \pm 38$	$7.80 \pm 1.50$
<b>H<math>\beta</math> Broad</b>	<b><math>41.12 \pm 0.04</math></b>	<b><math>2365 \pm 273</math></b>	<b><math>1855 \pm 87</math></b>	<b><math>70.56 \pm 3.45</math></b>
[O III] 5007	$40.97 \pm 0.02$	$328 \pm 63$	$336 \pm 38$	$49.96 \pm 1.62$
He I Narrow	–	–	–	–
<b>He I Broad</b>	<b><math>40.01 \pm 0.18</math></b>	<b><math>3024 \pm 66</math></b>	<b><math>1284 \pm 27</math></b>	<b><math>5.48 \pm 1.25</math></b>
[O I] 6300	$39.64 \pm 0.11$	$312 \pm 63$	$131 \pm 25$	$2.40 \pm 0.39$
H $\alpha$ Narrow	$40.54 \pm 0.03$	$312 \pm 63$	$131 \pm 25$	$18.87 \pm 0.47$
<b>H<math>\alpha</math> Broad</b>	<b><math>41.51 \pm 0.01</math></b>	<b><math>1948 \pm 92</math></b>	<b><math>971 \pm 25</math></b>	<b><math>177.60 \pm 1.48</math></b>
[N II] 6585	$40.56 \pm 0.02$	$312 \pm 63$	$131 \pm 25$	$20.06 \pm 0.46$
[S II] 6718	$40.13 \pm 0.05$	$312 \pm 63$	$131 \pm 25$	$7.43 \pm 0.46$
[S II] 6732	$39.95 \pm 0.06$	$312 \pm 63$	$131 \pm 25$	$4.86 \pm 0.44$

## Emission Summary

H $\alpha$ broad SNR	10.44
H $\beta$ broad SNR	3.62
H $\gamma$ broad SNR	1.90
AGN frac	0.33
Host frac	0.67
$\log L_{5100, \text{Host}}$	43.28
Fe II/H $\beta$	0.54
Fe II/[O III]	0.76

## Quality Flags

spurious_hab/hbb	0/0
15100	1
balmer	0
balmer_snr	1
hb_width	2
balmer_width	0