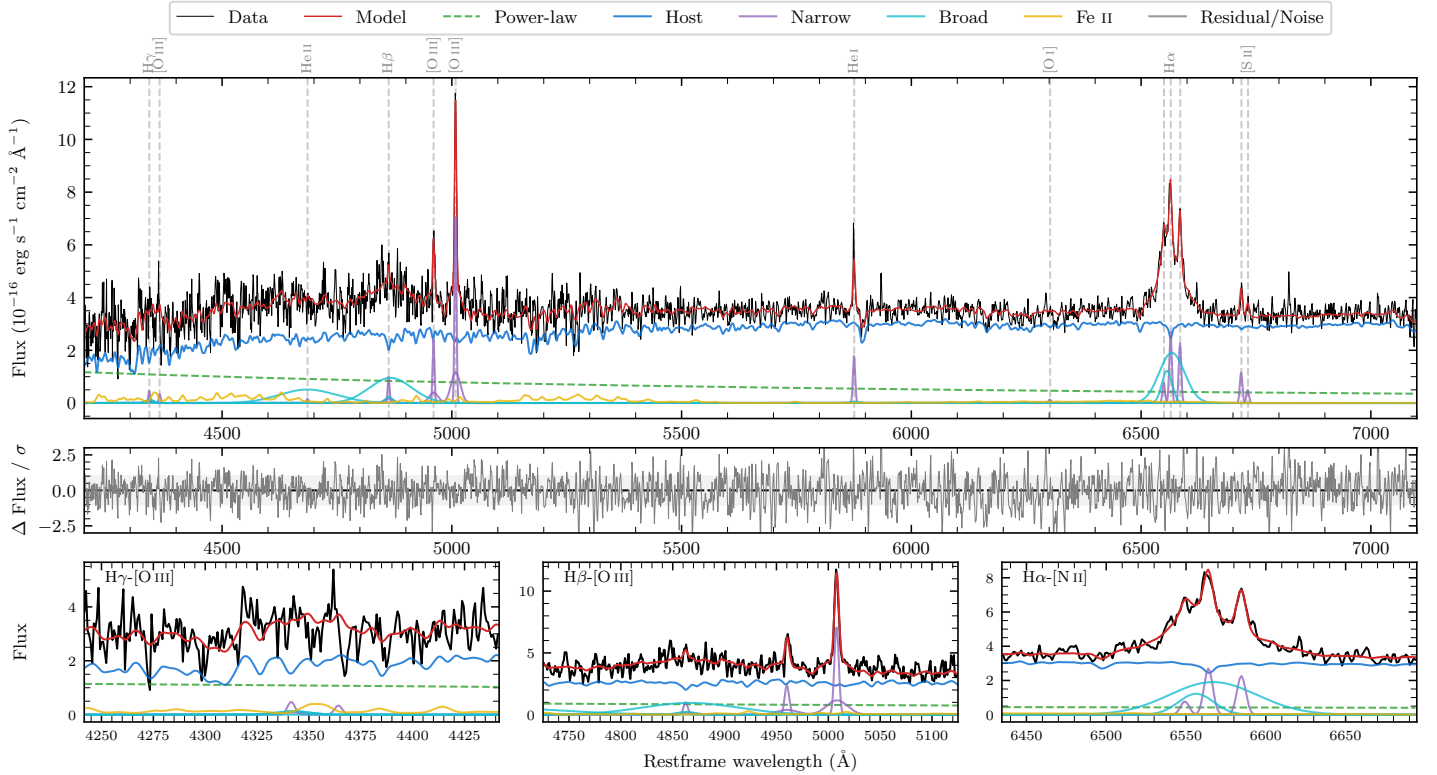
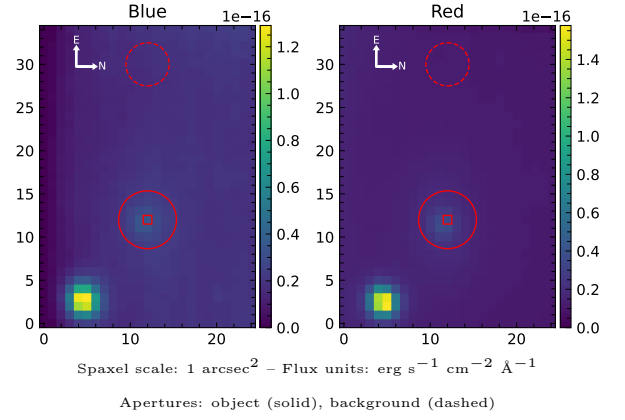


6dFGS gJ140925.4–062547

Spectrum ID	110033878_sp1	Spectrum type	Sy 1.5
Alt name	g1409254–062547	Quality flag	good
z	0.0725	AGN reference	6dFGS
RA, Dec	212.3560, –6.4297	MW $E(B - V)$	0.028
MJD	59668.7	Power law α_ν	0.28 ± 0.23
SNR/Å B/R	6.7/14.6	$\log L_{5100, \text{AGN}}$	42.69 ± 0.08
Obs airmass	1.14	$\log H\beta_{\text{Br}} / [\text{O III}]$	0.24 ± 0.05
SMSS ID	110033878	$\log M_{L5100} / M_\odot$	7.83 ± 0.15
Neighbour	6.5", 110033879	$\log M_{\text{H}\alpha} / M_\odot$	6.79 ± 0.05
SMSS $\langle r_6''_{\text{ap}} \rangle$	16.88 ± 0.06	$\log M_{\text{H}\beta} / M_\odot$	7.96 ± 0.15
2MASS K_{ext}	12.77 ± 0.17	$\log M_{[\text{O III}]} / M_\odot$	7.98 ± 0.15



Emission Line Measurements

Line	$\log L$ (erg s $^{-1}$)	FWHM (km s $^{-1}$)	σ (km s $^{-1}$)	EW (Å)
H γ Narrow	39.72 ± 0.35	332 ± 64	408 ± 35	3.80 ± 3.17
Hγ Broad	—	—	—	—
[O III] 4364	—	—	—	—
He II Narrow	—	—	—	—
He II Broad	41.04 ± 0.07	9304 ± 75	3951 ± 31	93.56 ± 8.35
H β Narrow	40.10 ± 0.18	332 ± 64	408 ± 35	11.74 ± 3.29
Hβ Broad	41.21 ± 0.04	5550 ± 966	2397 ± 54	148.18 ± 7.61
[O III] 5007	40.96 ± 0.03	332 ± 64	408 ± 35	91.62 ± 3.80
He I Narrow	40.18 ± 0.06	295 ± 63	125 ± 25	21.77 ± 1.35
He I Broad	39.29 ± 0.46	1292 ± 68	548 ± 27	2.82 ± 2.28
[O I] 6300	39.08 ± 0.35	295 ± 63	125 ± 25	2.04 ± 1.18
H α Narrow	40.40 ± 0.03	295 ± 63	125 ± 25	46.99 ± 1.52
Hα Broad	41.36 ± 0.01	2173 ± 116	978 ± 25	418.91 ± 5.01
[N II] 6585	40.33 ± 0.03	295 ± 63	125 ± 25	39.80 ± 1.51
[S II] 6718	40.05 ± 0.06	295 ± 63	125 ± 25	21.66 ± 1.82
[S II] 6732	39.67 ± 0.12	295 ± 63	125 ± 25	9.28 ± 1.64

Emission Summary

H α broad SNR	6.00
H β broad SNR	2.39
H γ broad SNR	0.69
AGN frac	0.23
Host frac	0.77
$\log L_{5100, \text{Host}}$	43.21
Fe II/H β	0.58
Fe II/[O III]	0.99

Quality Flags

spurious_hab/hbb	0/0
15100	1
balmer	1
balmer_snr	2
hb_width	0
balmer_width	1