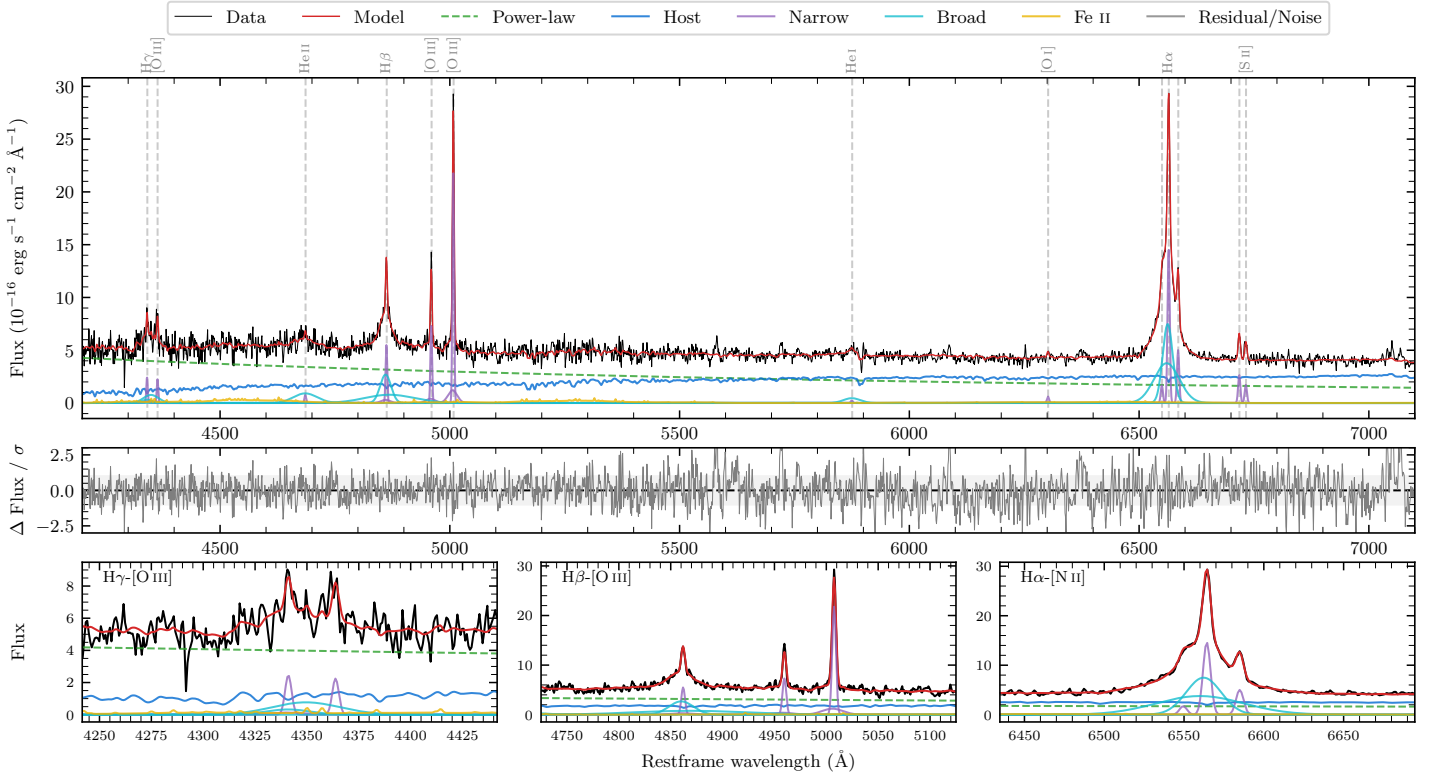
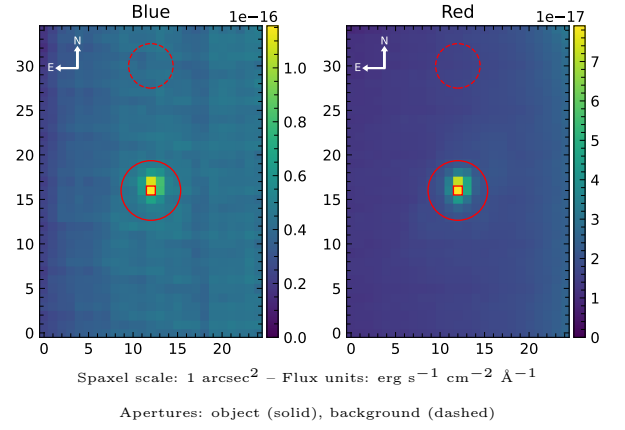


LEDA 991676

Spectrum ID	109988713_sp1	Spectrum type	Sy 1.5
Alt name	g1423502-092318	Quality flag	good
z	0.0682	AGN reference	6dFGS
RA, Dec	215.9594, -9.3882	MW $E(B - V)$	0.053
MJD	60018.69	Power law α_ν	0.06 ± 0.21
SNR/ \AA B/R	7.7/14.9	$\log L_{5100, \text{AGN}}$	43.22 ± 0.03
Obs airmass	1.08	$\log H\beta_{\text{Br}}/[\text{O III}]$	0.16 ± 0.04
SMSS ID	109988713	$\log M_{L5100}/M_\odot$	7.19 ± 0.07
Neighbour	None $< 15''$	$\log M_{\text{H}\alpha}/M_\odot$	6.70 ± 0.04
SMSS $\langle r_6 \rangle_{\text{ap}}$	17.03 ± 0.06	$\log M_{\text{H}\beta}/M_\odot$	7.16 ± 0.07
2MASS K_{ext}	13.57 ± 0.18	$\log M_{[\text{O III}]} / M_\odot$	7.23 ± 0.07



Emission Line Measurements

Line	$\log L$ (erg s ⁻¹)	FWHM (km s ⁻¹)	σ (km s ⁻¹)	EW (Å)
H γ Narrow	40.18 ± 0.12	266 ± 63	310 ± 32	3.37 ± 0.97
Hγ Broad	40.71 ± 0.10	2486 ± 311	914 ± 87	10.77 ± 1.40
[O III] 4364	40.03 ± 0.13	256 ± 63	108 ± 25	2.39 ± 0.43
He II Narrow	39.60 ± 0.26	256 ± 63	108 ± 25	1.03 ± 0.42
He II Broad	40.85 ± 0.07	3879 ± 225	1647 ± 95	18.51 ± 1.72
H β Narrow	40.58 ± 0.05	266 ± 63	310 ± 32	10.69 ± 1.02
Hβ Broad	41.35 ± 0.03	2044 ± 156	1707 ± 114	62.67 ± 2.54
[O III] 5007	41.19 ± 0.02	266 ± 63	310 ± 32	46.27 ± 1.13
He I Narrow	39.20 ± 0.31	256 ± 63	108 ± 25	0.65 ± 0.30
He I Broad	40.39 ± 0.07	2143 ± 169	910 ± 71	10.30 ± 0.98
[O I] 6300	39.63 ± 0.11	256 ± 63	108 ± 25	2.02 ± 0.34
H α Narrow	41.02 ± 0.01	256 ± 63	108 ± 25	54.47 ± 0.50
Hα Broad	41.75 ± 0.01	1496 ± 65	720 ± 25	292.05 ± 1.52
[N II] 6585	40.56 ± 0.02	256 ± 63	108 ± 25	18.86 ± 0.49
[S II] 6718	40.30 ± 0.03	256 ± 63	108 ± 25	10.74 ± 0.53
[S II] 6732	40.10 ± 0.05	256 ± 63	108 ± 25	6.92 ± 0.54

Emission Summary

H α broad SNR	17.92
H β broad SNR	5.53
H γ broad SNR	1.77
AGN frac	0.63
Host frac	0.37
$\log L_{5100, \text{Host}}$	42.99
Fe II/H β	0.39
Fe II/[O III]	0.56

Quality Flags

spurious_hab/hbb	0/0
15100	0
balmer	0
balmer_snr	1
hb_width	2
balmer_width	0