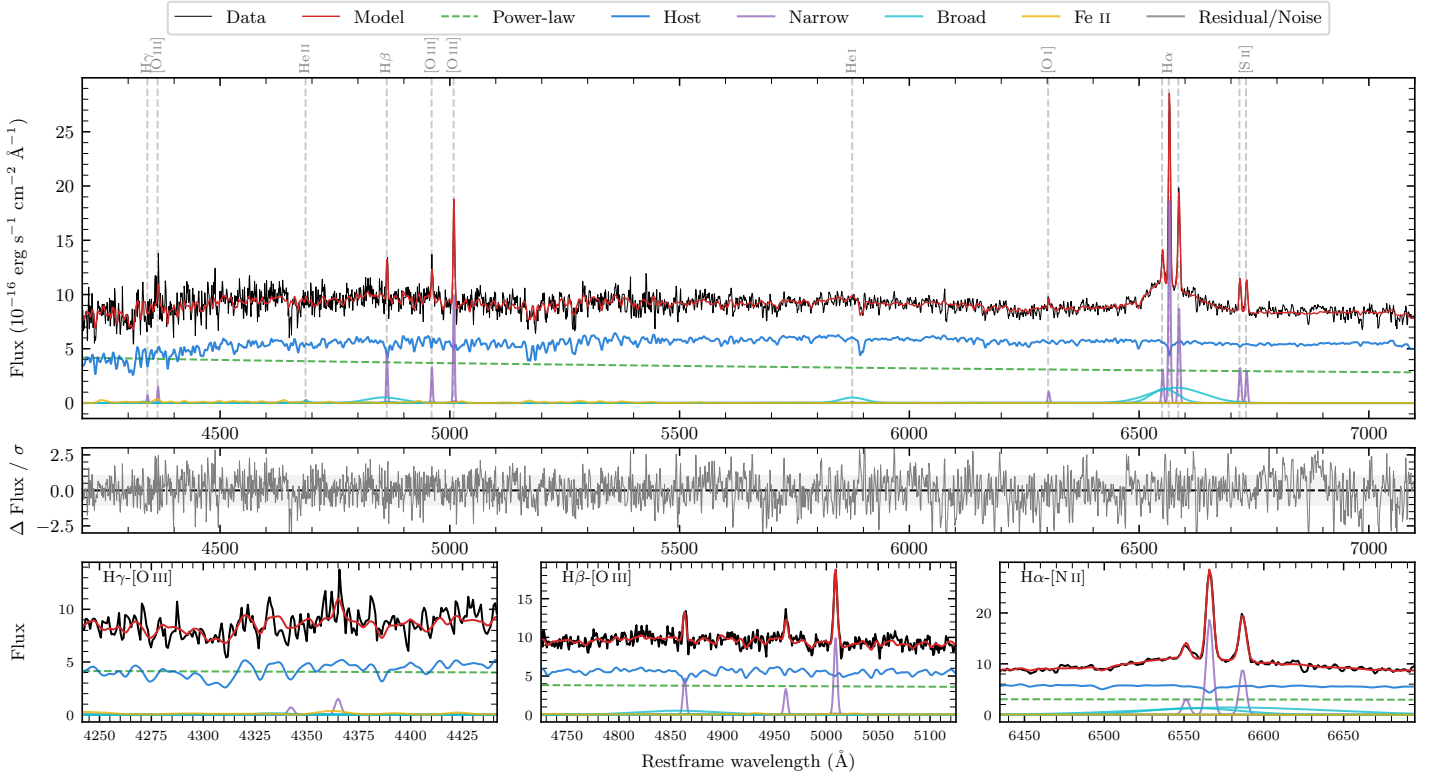
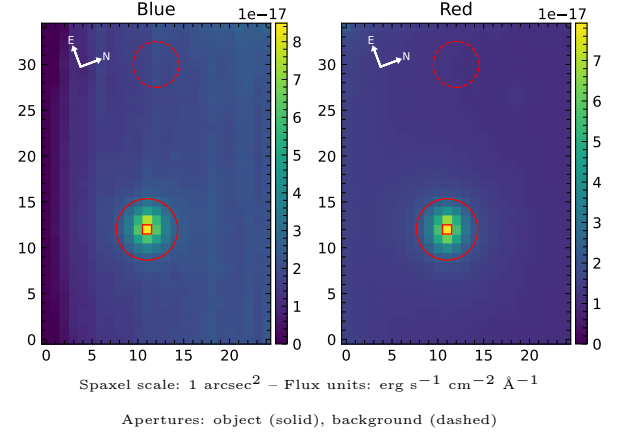


# LEDA 94236

Spectrum ID	109721266_sp1	Spectrum type	Sy 1.5+
Alt name	g1401018-111223	Quality flag	good
$z$	0.0367	AGN reference	6dFGS
RA, Dec	210.2576, -11.2065	MW $E(B - V)$	0.048
MJD	59732.47	Power law $\alpha_\nu$	$-1.25 \pm 0.06$
SNR/ $\text{\AA}$ B/R	12.1/26.0	$\log L_{5100, \text{AGN}}$	$42.76 \pm 0.02$
Obs airmass	1.06	$\log H\beta_{\text{Br}}/[\text{O III}]$	$< 0.23$
SMSS ID	109721266	$\log M_{L5100}/M_\odot$	—
Neighbour	6.2", 2177387287	$\log M_{\text{H}\alpha}/M_\odot$	$7.19 \pm 0.05$
SMSS $\langle r_{6''}^{\text{ap}} \rangle$	$15.94 \pm 0.02$	$\log M_{\text{H}\beta}/M_\odot$	—
2MASS $K_{\text{ext}}$	$11.98 \pm 0.08$	$\log M_{[\text{O III}]} / M_\odot$	—



## Emission Line Measurements

Line	$\log L$ (erg s <sup>-1</sup> )	FWHM (km s <sup>-1</sup> )	$\sigma$ (km s <sup>-1</sup> )	EW (Å)
H $\gamma$ Narrow	—	—	—	—
<b>H<math>\gamma</math> Broad</b>	—	—	—	—
[O III] 4364	$39.24 \pm 0.23$	$235 \pm 62$	$97 \pm 25$	$1.38 \pm 0.44$
He II Narrow	—	—	—	—
<b>He II Broad</b>	<b><math>39.09 \pm 0.45</math></b>	<b><math>1178 \pm 62</math></b>	<b><math>500 \pm 25</math></b>	<b><math>1.03 \pm 0.85</math></b>
H $\beta$ Narrow	$39.82 \pm 0.06$	$234 \pm 63$	$174 \pm 61$	$5.65 \pm 0.84$
<b>H<math>\beta</math> Broad</b>	$< 40.38$	—	—	—
[O III] 5007	$40.15 \pm 0.03$	$234 \pm 63$	$174 \pm 61$	$12.40 \pm 0.85$
He I Narrow	—	—	—	—
<b>He I Broad</b>	<b><math>40.05 \pm 0.06</math></b>	<b><math>3320 \pm 63</math></b>	<b><math>1410 \pm 25</math></b>	<b><math>11.16 \pm 0.90</math></b>
[O I] 6300	$39.24 \pm 0.10$	$235 \pm 62$	$97 \pm 25$	$1.81 \pm 0.24$
H $\alpha$ Narrow	$40.51 \pm 0.01$	$235 \pm 62$	$97 \pm 25$	$34.70 \pm 0.27$
<b>H<math>\alpha</math> Broad</b>	<b><math>40.98 \pm 0.01</math></b>	<b><math>4508 \pm 181</math></b>	<b><math>1932 \pm 33</math></b>	<b><math>103.12 \pm 1.38</math></b>
[N II] 6585	$40.19 \pm 0.01$	$235 \pm 62$	$97 \pm 25$	$16.64 \pm 0.28$
[S II] 6718	$39.77 \pm 0.03$	$235 \pm 62$	$97 \pm 25$	$6.40 \pm 0.26$
[S II] 6732	$39.71 \pm 0.04$	$235 \pm 62$	$97 \pm 25$	$5.63 \pm 0.28$

## Emission Summary

H $\alpha$ broad SNR	3.53
H $\beta$ broad SNR	0.90
H $\gamma$ broad SNR	0.00
AGN frac	0.41
Host frac	0.59
$\log L_{5100, \text{Host}}$	42.92
Fe II/H $\beta$	—
Fe II/[O III]	0.80

## Quality Flags

spurious_hab/hbb	0/0
15100	1
balmer	2
balmer_snr	2
hb_width	2
balmer_width	2