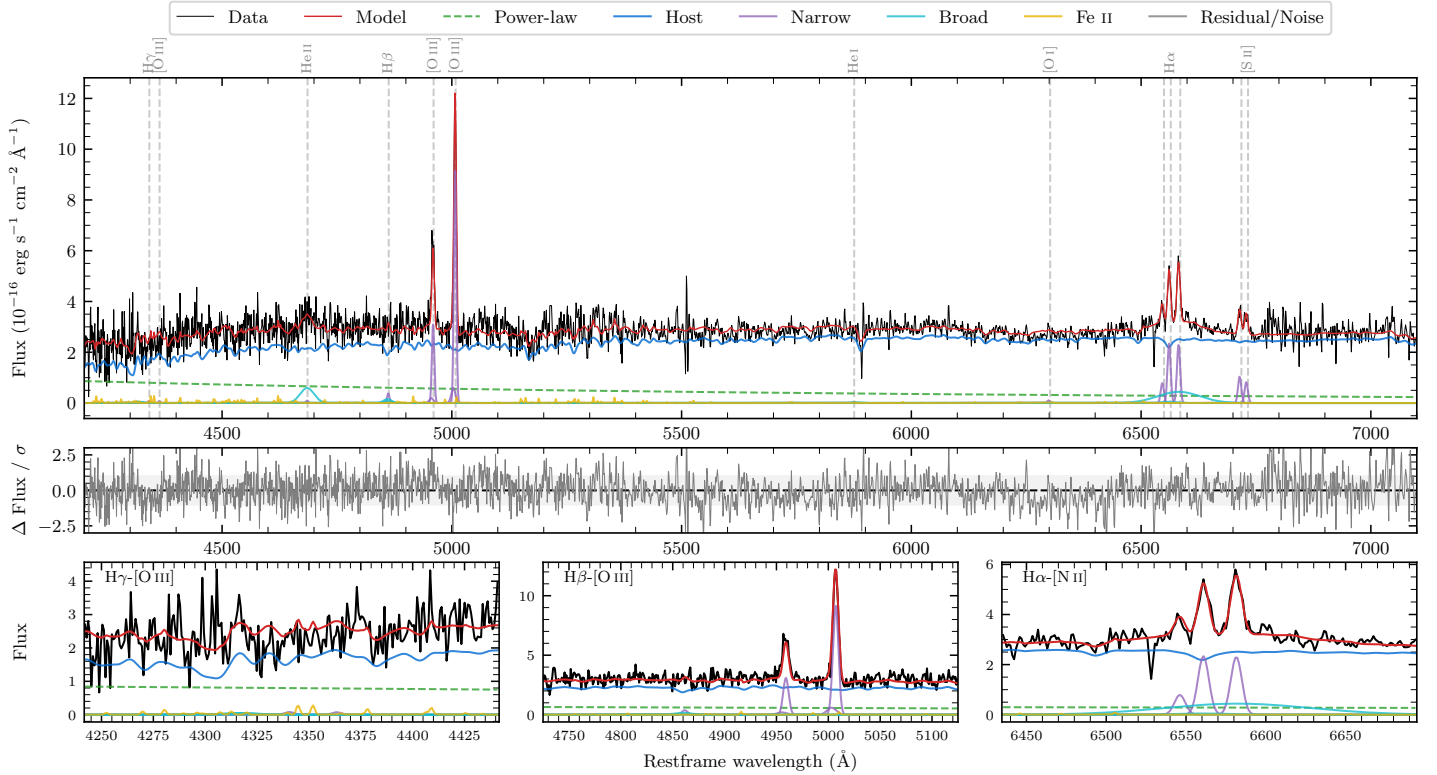
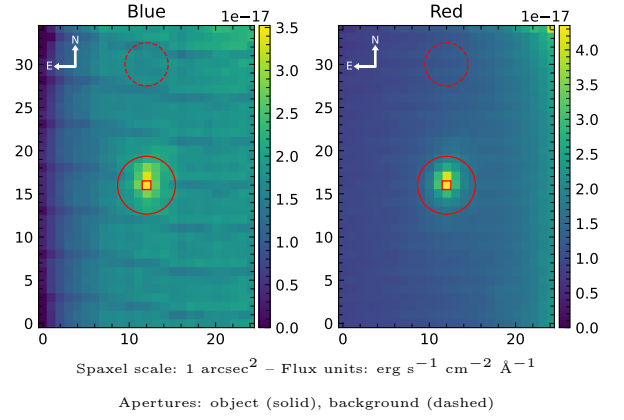


LEDA 966419

Spectrum ID	109673188_sp1	Spectrum type	Sy 1.5+
Alt name	g1353282-112306	Quality flag	good
z	0.0686	AGN reference	6dFGS
RA, Dec	208.3675, -11.3850	MW $E(B-V)$	0.054
MJD	60381.72	Power law α_ν	0.49 ± 0.01
SNR/ \AA B/R	6.7/11.1	$\log L_{5100, \text{AGN}}$	42.50 ± 0.05
Obs airmass	1.07	$\log H\beta_{\text{Br}}/[\text{O III}]$	< -0.43
SMSS ID	109673188	$\log M_{L5100}/M_\odot$	—
Neighbour	None $< 15''$	$\log M_{\text{H}\alpha}/M_\odot$	7.14 ± 0.07
SMSS $\langle r_6''_{\text{ap}} \rangle$	16.55 ± 0.05	$\log M_{\text{H}\beta}/M_\odot$	—
2MASS K_{ext}	12.19 ± 0.09	$\log M_{[\text{O III}]} / M_\odot$	—



Emission Line Measurements

Line	$\log L$ (erg s $^{-1}$)	FWHM (km s $^{-1}$)	σ (km s $^{-1}$)	EW (Angstrom)
H γ Narrow	—	—	—	—
Hγ Broad	—	—	—	—
[O III] 4364	—	—	—	—
He II Narrow	—	—	—	—
He II Broad	40.44 ± 0.09	2274 ± 62	966 ± 25	36.43 ± 4.13
H β Narrow	39.52 ± 0.33	385 ± 63	184 ± 27	4.79 ± 2.05
Hβ Broad	< 40.49	—	—	—
[O III] 5007	40.92 ± 0.01	385 ± 63	184 ± 27	129.26 ± 2.73
He I Narrow	—	—	—	—
He I Broad	—	—	—	—
[O I] 6300	39.04 ± 0.44	374 ± 62	157 ± 25	2.98 ± 2.11
H α Narrow	40.39 ± 0.03	374 ± 62	157 ± 25	75.68 ± 2.75
Hα Broad	40.82 ± 0.05	4747 ± 185	1756 ± 30	198.71 ± 10.75
[N II] 6585	40.39 ± 0.03	374 ± 62	157 ± 25	75.63 ± 2.70
[S II] 6718	40.05 ± 0.07	374 ± 62	157 ± 25	36.54 ± 3.12
[S II] 6732	39.95 ± 0.09	374 ± 62	157 ± 25	29.11 ± 3.25

Emission Summary

H α broad SNR	1.16
H β broad SNR	0.72
H γ broad SNR	0.00
AGN frac	0.19
Host frac	0.81
$\log L_{5100, \text{Host}}$	43.11
Fe II/H β	—
Fe II/[O III]	0.15

Quality Flags

spurious_hab/hbb	0/0
15100	2
balmer	2
balmer_snr	2
hb_width	2
balmer_width	2